

CPT1B (isoform 1) Antibody (C-Term)
Peptide-affinity purified goat antibody
Catalog # AF2267a

Specification

CPT1B (isoform 1) Antibody (C-Term) - Product Information

Application	IHC
Primary Accession	O92523
Other Accession	NP_689452.1 , NP_689451.1 , NP_004368.1 , NP_001138609.1 , NP_001138607.1 , NP_001138606.1 , NP_001138608.1 , 1375
Reactivity	Human
Host	Goat
Clonality	Polyclonal
Concentration	0.5 mg/ml
Isotype	IgG
Calculated MW	87801

CPT1B (isoform 1) Antibody (C-Term) - Additional Information

Gene ID 1375

Other Names

Carnitine O-palmitoyltransferase 1, muscle isoform, CPT1-M, 2.3.1.21, Carnitine O-palmitoyltransferase I, muscle isoform, CPT I, CPTI-M, Carnitine palmitoyltransferase 1B, Carnitine palmitoyltransferase I-like protein, CPT1B, KIAA1670

Format

0.5 mg/ml in Tris saline, 0.02% sodium azide, pH7.3 with 0.5% bovine serum albumin

Storage

Maintain refrigerated at 2-8°C for up to 6 months. For long term storage store at -20°C in small aliquots to prevent freeze-thaw cycles.

Precautions

CPT1B (isoform 1) Antibody (C-Term) is for research use only and not for use in diagnostic or therapeutic procedures.

CPT1B (isoform 1) Antibody (C-Term) - Protein Information

Name CPT1B

Synonyms KIAA1670

Function

Catalyzes the transfer of the acyl group of long-chain fatty acid-CoA conjugates onto carnitine, an essential step for the mitochondrial uptake of long-chain fatty acids and their subsequent

beta-oxidation in the mitochondrion.

Cellular Location

Mitochondrion outer membrane; Multi-pass membrane protein

Tissue Location

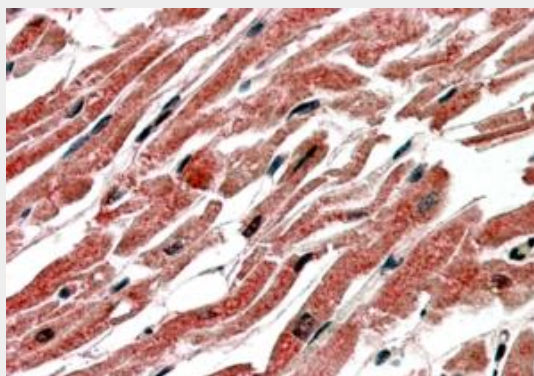
Strong expression in heart and skeletal muscle. No expression in liver and kidney

CPT1B (isoform 1) Antibody (C-Term) - Protocols

Provided below are standard protocols that you may find useful for product applications.

- [Western Blot](#)
- [Blocking Peptides](#)
- [Dot Blot](#)
- [Immunohistochemistry](#)
- [Immunofluorescence](#)
- [Immunoprecipitation](#)
- [Flow Cytometry](#)
- [Cell Culture](#)

CPT1B (isoform 1) Antibody (C-Term) - Images



AF2267a (3.8 µg/ml) staining of paraffin embedded Human Heart. Steamed antigen retrieval with citrate buffer pH 6, AP-staining.

CPT1B (isoform 1) Antibody (C-Term) - Background

This antibody is expected to recognise human isoforms a (NP_689452.1; NP_689451.1; NP_004368.1; NP_001138609.1; NP_001138607.1), isoform c (NP_001138606.1) and isoform d (NP_001138608.1).

CPT1B (isoform 1) Antibody (C-Term) - References

Isolation and characterization of cDNA and genomic clones encoding human muscle type carnitine palmitoyltransferase I. Yamazaki N, Shinohara Y, Shima A, Yamanaka Y, Terada H. Biochim Biophys Acta. 1996 Jun 7;1307(2):157-61. PMID: 8679700