

KLF2 / LKLF Antibody (N-Term)
Peptide-affinity purified goat antibody
Catalog # AF2263a

Specification

KLF2 / LKLF Antibody (N-Term) - Product Information

Application	WB
Primary Accession	O9Y5W3
Other Accession	NP_057354.1 , 10365 , 16598 (mouse)
Reactivity	Human
Predicted	Mouse, Rat, Pig, Dog
Host	Goat
Clonality	Polyclonal
Concentration	0.5 mg/ml
Isotype	IgG
Calculated MW	37420

KLF2 / LKLF Antibody (N-Term) - Additional Information

Gene ID 10365

Other Names

Krueppel-like factor 2, Lung krueppel-like factor, KLF2, LKLF

Format

0.5 mg/ml in Tris saline, 0.02% sodium azide, pH7.3 with 0.5% bovine serum albumin

Storage

Maintain refrigerated at 2-8°C for up to 6 months. For long term storage store at -20°C in small aliquots to prevent freeze-thaw cycles.

Precautions

KLF2 / LKLF Antibody (N-Term) is for research use only and not for use in diagnostic or therapeutic procedures.

KLF2 / LKLF Antibody (N-Term) - Protein Information

Name KLF2

Synonyms LKLF

Function

Transcription factor that binds to the CACCC box in the promoter of target genes such as HBB/beta globin or NOV and activates their transcription (PubMed:21063504). Might be involved in transcriptional regulation by modulating the binding of the RARA nuclear receptor to RARE DNA elements (PubMed:28167758)

target="_blank">28167758).

Cellular Location

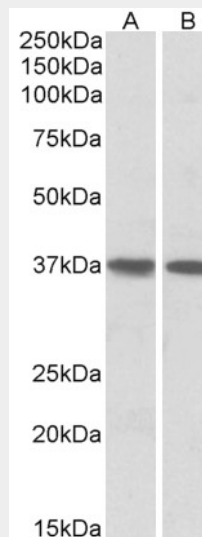
Nucleus.

KLF2 / LKLF Antibody (N-Term) - Protocols

Provided below are standard protocols that you may find useful for product applications.

- [Western Blot](#)
- [Blocking Peptides](#)
- [Dot Blot](#)
- [Immunohistochemistry](#)
- [Immunofluorescence](#)
- [Immunoprecipitation](#)
- [Flow Cytometry](#)
- [Cell Culture](#)

KLF2 / LKLF Antibody (N-Term) - Images



AF2263a (1 µg/ml) staining of Human Heart (A) and Lung (B) lysates (35 µg protein in RIPA buffer). Primary incubation was 1 hour. Detected by chemiluminescence.

KLF2 / LKLF Antibody (N-Term) - References

Isolation of a gene encoding a functional zinc finger protein homologous to erythroid Kruppel-like factor: identification of a new multigene family. Anderson KP, Kern CB, Crable SC, Lingrel JB. Mol Cell Biol. 1995 Nov;15(11):5957-65. PMID: 7565748