

**RP11 / PRPF31 Antibody (C-Term)**  
Peptide-affinity purified goat antibody  
Catalog # AF2256a

**Specification**

---

**RP11 / PRPF31 Antibody (C-Term) - Product Information**

Application	WB
Primary Accession	<a href="#">Q8WWY3</a>
Other Accession	<a href="#">NP_056444.3</a> , <a href="#">26121</a>
Reactivity	Human
Predicted	Dog
Host	Goat
Clonality	Polyclonal
Concentration	0.5 mg/ml
Isotype	IgG
Calculated MW	55456

**RP11 / PRPF31 Antibody (C-Term) - Additional Information**

**Gene ID** 26121

**Other Names**

U4/U6 small nuclear ribonucleoprotein Prp31, Pre-mRNA-processing factor 31, Serologically defined breast cancer antigen NY-BR-99, U4/U6 snRNP 61 kDa protein, Protein 61K, hPrp31, PRPF31, PRP31

**Format**

0.5 mg/ml in Tris saline, 0.02% sodium azide, pH7.3 with 0.5% bovine serum albumin

**Storage**

Maintain refrigerated at 2-8°C for up to 6 months. For long term storage store at -20°C in small aliquots to prevent freeze-thaw cycles.

**Precautions**

RP11 / PRPF31 Antibody (C-Term) is for research use only and not for use in diagnostic or therapeutic procedures.

**RP11 / PRPF31 Antibody (C-Term) - Protein Information**

**Name** PRPF31 ([HGNC:15446](#))

**Synonyms** PRP31

**Function**

Involved in pre-mRNA splicing as component of the spliceosome (PubMed:<a href="http://www.uniprot.org/citations/11867543" target="\_blank">11867543</a>, PubMed:<a href="http://www.uniprot.org/citations/20118938" target="\_blank">20118938</a>, PubMed:<a href="http://www.uniprot.org/citations/20118938" target="\_blank">20118938</a>, PubMed:<a href="http://www.uniprot.org/citations/20118938" target="\_blank">20118938</a>)

href="http://www.uniprot.org/citations/28781166" target="\_blank">28781166</a>). Required for the assembly of the U4/U5/U6 tri-snRNP complex, one of the building blocks of the spliceosome (PubMed:<a href="http://www.uniprot.org/citations/11867543" target="\_blank">11867543</a>).

#### Cellular Location

Nucleus. Nucleus speckle. Nucleus, Cajal body. Note=Predominantly found in speckles and in Cajal bodies.

#### Tissue Location

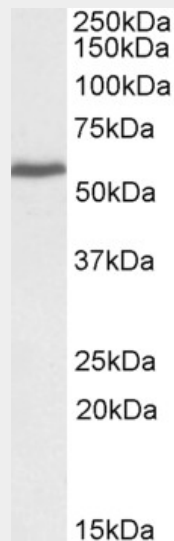
Ubiquitously expressed.

### RP11 / PRPF31 Antibody (C-Term) - Protocols

Provided below are standard protocols that you may find useful for product applications.

- [Western Blot](#)
- [Blocking Peptides](#)
- [Dot Blot](#)
- [Immunohistochemistry](#)
- [Immunofluorescence](#)
- [Immunoprecipitation](#)
- [Flow Cytometry](#)
- [Cell Culture](#)

### RP11 / PRPF31 Antibody (C-Term) - Images



AF2256a (0.3 µg/ml) staining of cell line A431 lysate (35 µg protein in RIPA buffer). Primary incubation was 1 hour. Detected by chemiluminescence.

### RP11 / PRPF31 Antibody (C-Term) - References

Protein 61K, encoded by a gene (PRPF31) linked to autosomal dominant retinitis pigmentosa, is required for U4/U6\*U5 tri-snRNP formation and pre-mRNA splicing. Makarova OV, Makarov EM, Liu S, Vornlocher HP, Luhrmann R. EMBO J. 2002 Mar 1;21(5):1148-57. PMID: 11867543