

Tensin 1 / TNS1 Antibody (C-Term)
Peptide-affinity purified goat antibody
Catalog # AF2243a

Specification

Tensin 1 / TNS1 Antibody (C-Term) - Product Information

Application	IHC
Primary Accession	O9HBL0
Other Accession	NP_072174.3 , 7145 , 21961 (mouse) , 301509 (rat)
Predicted Host	Human, Mouse, Rat, Dog
Clonality	Goat
Concentration	Polyclonal
Isotype	0.5 mg/ml
Calculated MW	IgG
	197023

Tensin 1 / TNS1 Antibody (C-Term) - Additional Information

Gene ID 7145

Other Names
Tensin-1, TNS1, TNS

Format
0.5 mg/ml in Tris saline, 0.02% sodium azide, pH7.3 with 0.5% bovine serum albumin

Storage
Maintain refrigerated at 2-8°C for up to 6 months. For long term storage store at -20°C in small aliquots to prevent freeze-thaw cycles.

Precautions
Tensin 1 / TNS1 Antibody (C-Term) is for research use only and not for use in diagnostic or therapeutic procedures.

Tensin 1 / TNS1 Antibody (C-Term) - Protein Information

Name TNS1

Synonyms TNS

Function
May act as a protein phosphatase and/or a lipid phosphatase (Probable). Involved in fibrillar adhesion formation (PubMed:[21768292](http://www.uniprot.org/citations/21768292), PubMed:[28005397](http://www.uniprot.org/citations/28005397)). Essential for myofibroblast differentiation and myofibroblast-mediated extracellular matrix deposition (PubMed:[28005397](http://www.uniprot.org/citations/28005397)).

[28005397](http://www.uniprot.org/citations/28005397)). Enhances RHOA activation in the presence of DLC1 (PubMed:[26427649](http://www.uniprot.org/citations/26427649)). Plays a role in cell polarization and migration (PubMed:[19826001](http://www.uniprot.org/citations/19826001)). May be involved in cartilage development and in linking signal transduction pathways to the cytoskeleton (PubMed:[21768292](http://www.uniprot.org/citations/21768292)).

Cellular Location

Cell surface. Cell junction, focal adhesion. Cytoplasm, cytoskeleton. Note=Localizes to both focal adhesions and fibrillar adhesions (PubMed:20069572). Localized at the cell periphery preferentially to fibrillar adhesions rather than to focal adhesions. Translocates from the cell edge to the cell center in an ITGB1BP1-dependent manner (PubMed:21768292)

Tissue Location

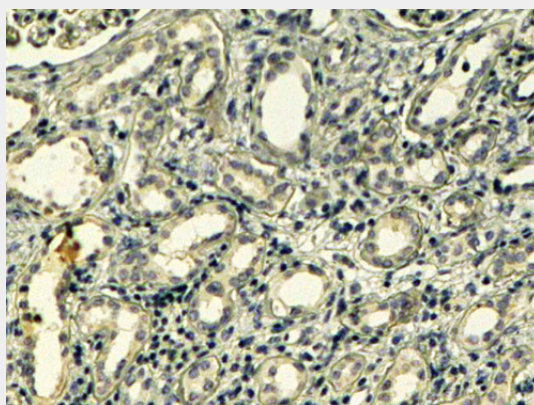
In the lung, detected in the alveolar septa (at protein level) (PubMed:28005397). Ubiquitous (PubMed:11023826)

Tensin 1 / TNS1 Antibody (C-Term) - Protocols

Provided below are standard protocols that you may find useful for product applications.

- [Western Blot](#)
- [Blocking Peptides](#)
- [Dot Blot](#)
- [Immunohistochemistry](#)
- [Immunofluorescence](#)
- [Immunoprecipitation](#)
- [Flow Cytometry](#)
- [Cell Culture](#)

Tensin 1 / TNS1 Antibody (C-Term) - Images



AF2243a (4 µg/ml) staining of paraffin embedded Human Kidney. Steamed antigen retrieval with Tris/EDTA buffer pH 9, HRP-staining.

Tensin 1 / TNS1 Antibody (C-Term) - References

Molecular characterization of human tensin. Chen H, Ishii A, Wong WK, Chen LB, Lo SH. Biochem J. 2000 Oct 15;351 Pt 2:403-11. PMID: 11023826