

Goat Anti-CPT2 (aa406-418) Antibody
Peptide-affinity purified goat antibody
Catalog # AF2220a

Specification

Goat Anti-CPT2 (aa406-418) Antibody - Product Information

Application	WB
Primary Accession	P23786
Other Accession	NP_000089 , 1376
Reactivity	Human
Host	Goat
Clonality	Polyclonal
Concentration	100ug/200ul
Isotype	IgG
Calculated MW	73777

Goat Anti-CPT2 (aa406-418) Antibody - Additional Information

Gene ID 1376

Other Names

Carnitine O-palmitoyltransferase 2, mitochondrial, 2.3.1.21, Carnitine palmitoyltransferase II, CPT II, CPT2, CPT1

Format

0.5 mg IgG/ml in Tris saline (20mM Tris pH7.3, 150mM NaCl), 0.02% sodium azide, with 0.5% bovine serum albumin

Storage

Maintain refrigerated at 2-8°C for up to 6 months. For long term storage store at -20°C in small aliquots to prevent freeze-thaw cycles.

Precautions

Goat Anti-CPT2 (aa406-418) Antibody is for research use only and not for use in diagnostic or therapeutic procedures.

Goat Anti-CPT2 (aa406-418) Antibody - Protein Information

Name CPT2 ([HGNC:2330](#))

Synonyms CPT1

Function

Involved in the intramitochondrial synthesis of acylcarnitines from accumulated acyl-CoA metabolites (PubMed: <http://www.uniprot.org/citations/20538056> target="_blank">20538056, PubMed: <http://www.uniprot.org/citations/24780397> target="_blank">24780397). Reconverts acylcarnitines back into the respective acyl-CoA

esters that can then undergo beta-oxidation, an essential step for the mitochondrial uptake of long-chain fatty acids and their subsequent beta-oxidation in the mitochondrion. Active with medium (C8- C12) and long-chain (C14-C18) acyl-CoA esters (PubMed:20538056).

Cellular Location

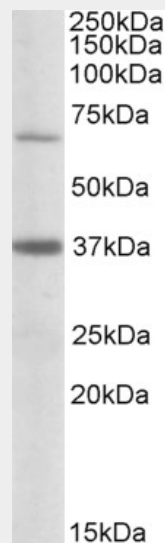
Mitochondrion inner membrane; Peripheral membrane protein; Matrix side

Goat Anti-CPT2 (aa406-418) Antibody - Protocols

Provided below are standard protocols that you may find useful for product applications.

- [Western Blot](#)
- [Blocking Peptides](#)
- [Dot Blot](#)
- [Immunohistochemistry](#)
- [Immunofluorescence](#)
- [Immunoprecipitation](#)
- [Flow Cytometry](#)
- [Cell Culture](#)

Goat Anti-CPT2 (aa406-418) Antibody - Images



AF2220a (0.5 µg/ml) staining of Human Liver lysate (35 µg protein in RIPA buffer). Primary incubation was 1 hour. Detected by chemiluminescence.

Goat Anti-CPT2 (aa406-418) Antibody - Background

The protein encoded by this gene is a nuclear protein which is transported to the mitochondrial inner membrane. Together with carnitine palmitoyltransferase I, the encoded protein oxidizes long-chain fatty acids in the mitochondria. Defects in this gene are associated with mitochondrial long-chain fatty-acid (LCFA) oxidation disorders.

Goat Anti-CPT2 (aa406-418) Antibody - References

Variation at the NFATC2 Locus Increases the Risk of Thiazolidinedione-Induced Edema in the Diabetes REduction Assessment with ramipril and rosiglitazone Medication (DREAM) Study. Bailey

SD, et al. Diabetes Care, 2010 Jul 13. PMID 20628086.

Physiogenomic analysis of statin-treated patients: domain-specific counter effects within the ACACB gene on low-density lipoprotein cholesterol? Ruaño G, et al. Pharmacogenomics, 2010 Jul. PMID 20602615.

High frequency of ETFDH c.250G>A mutation in Taiwanese patients with late-onset lipid storage myopathy. Lan MY, et al. Clin Genet, 2010 Mar 29. PMID 20370797.

Gene-centric association signals for lipids and apolipoproteins identified via the HumanCVD BeadChip. Talmud PJ, et al. Am J Hum Genet, 2009 Nov. PMID 19913121.

Malignant hyperthermia-like syndrome and carnitine palmitoyltransferase II deficiency with heterozygous R503C mutation. Hogan KJ, et al. Anesth Analg, 2009 Oct. PMID 19762733.