

Goat Anti-TPTE / PTEN2 Antibody
Peptide-affinity purified goat antibody
Catalog # AF2103a

Specification

Goat Anti-TPTE / PTEN2 Antibody - Product Information

Application	WB
Primary Accession	P56180
Other Accession	NP_954869 , 7179
Reactivity	Human
Host	Goat
Clonality	Polyclonal
Concentration	100ug/200ul
Isotype	IgG
Calculated MW	64322

Goat Anti-TPTE / PTEN2 Antibody - Additional Information

Gene ID 7179

Other Names

Putative tyrosine-protein phosphatase TPTE, 3.1.3.48, Cancer/testis antigen 44, CT44, Transmembrane phosphatase with tensin homology, Tumor antigen BJ-HCC-5, TPTE

Format

0.5 mg IgG/ml in Tris saline (20mM Tris pH7.3, 150mM NaCl), 0.02% sodium azide, with 0.5% bovine serum albumin

Storage

Maintain refrigerated at 2-8°C for up to 6 months. For long term storage store at -20°C in small aliquots to prevent freeze-thaw cycles.

Precautions

Goat Anti-TPTE / PTEN2 Antibody is for research use only and not for use in diagnostic or therapeutic procedures.

Goat Anti-TPTE / PTEN2 Antibody - Protein Information

Name TPTE

Function

Could be involved in signal transduction.

Cellular Location

Membrane; Multi-pass membrane protein.

Tissue Location

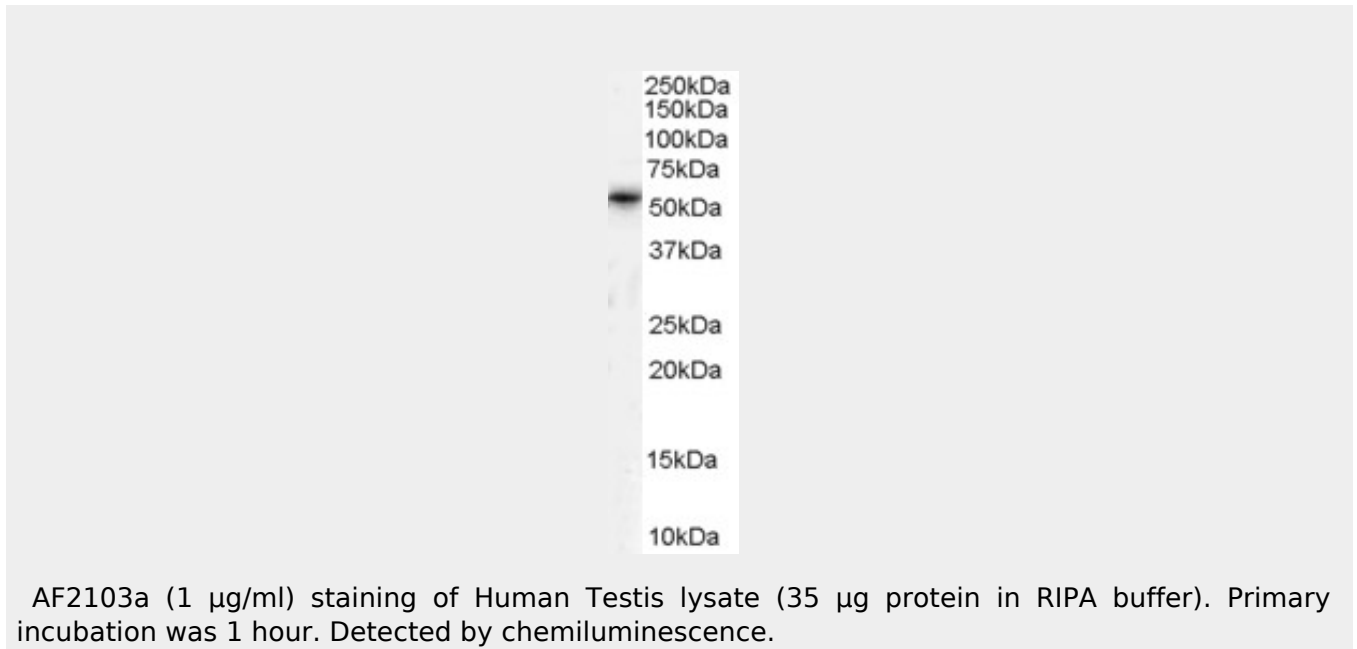
Exclusively expressed in testis.

Goat Anti-TPTE / PTEN2 Antibody - Protocols

Provided below are standard protocols that you may find useful for product applications.

- [Western Blot](#)
- [Blocking Peptides](#)
- [Dot Blot](#)
- [Immunohistochemistry](#)
- [Immunofluorescence](#)
- [Immunoprecipitation](#)
- [Flow Cytometry](#)
- [Cell Culture](#)

Goat Anti-TPTE / PTEN2 Antibody - Images



Goat Anti-TPTE / PTEN2 Antibody - References

Gene dosage change of TPTE and BAGE2 and breakpoint analysis in Robertsonian Down syndrome. Shaw SW, et al. J Hum Genet, 2008. PMID 18074101.

The status, quality, and expansion of the NIH full-length cDNA project: the Mammalian Gene Collection (MGC). Gerhard DS, et al. Genome Res, 2004 Oct. PMID 15489334.

The TPTE gene family: cellular expression, subcellular localization and alternative splicing. Tapparel C, et al. Gene, 2003 Dec 24. PMID 14659893.

Generation and initial analysis of more than 15,000 full-length human and mouse cDNA sequences. Strausberg RL, et al. Proc Natl Acad Sci U S A, 2002 Dec 24. PMID 12477932.

The murine orthologue of the Golgi-localized TPTE protein provides clues to the evolutionary history of the human TPTE gene family. Guipponi M, et al. Hum Genet, 2001 Dec. PMID 11810268.