

Goat Anti-TPD52L1 / D53 Antibody
Peptide-affinity purified goat antibody
Catalog # AF2101a

Specification

Goat Anti-TPD52L1 / D53 Antibody - Product Information

Application	WB
Primary Accession	O16890
Other Accession	NP_001003397 , 7164
Reactivity	Human
Host	Goat
Clonality	Polyclonal
Concentration	100ug/200ul
Isotype	IgG
Calculated MW	22449

Goat Anti-TPD52L1 / D53 Antibody - Additional Information

Gene ID 7164

Other Names

Tumor protein D53, hD53, Tumor protein D52-like 1, TPD52L1

Format

0.5 mg IgG/ml in Tris saline (20mM Tris pH7.3, 150mM NaCl), 0.02% sodium azide, with 0.5% bovine serum albumin

Storage

Maintain refrigerated at 2-8°C for up to 6 months. For long term storage store at -20°C in small aliquots to prevent freeze-thaw cycles.

Precautions

Goat Anti-TPD52L1 / D53 Antibody is for research use only and not for use in diagnostic or therapeutic procedures.

Goat Anti-TPD52L1 / D53 Antibody - Protein Information

Name TPD52L1

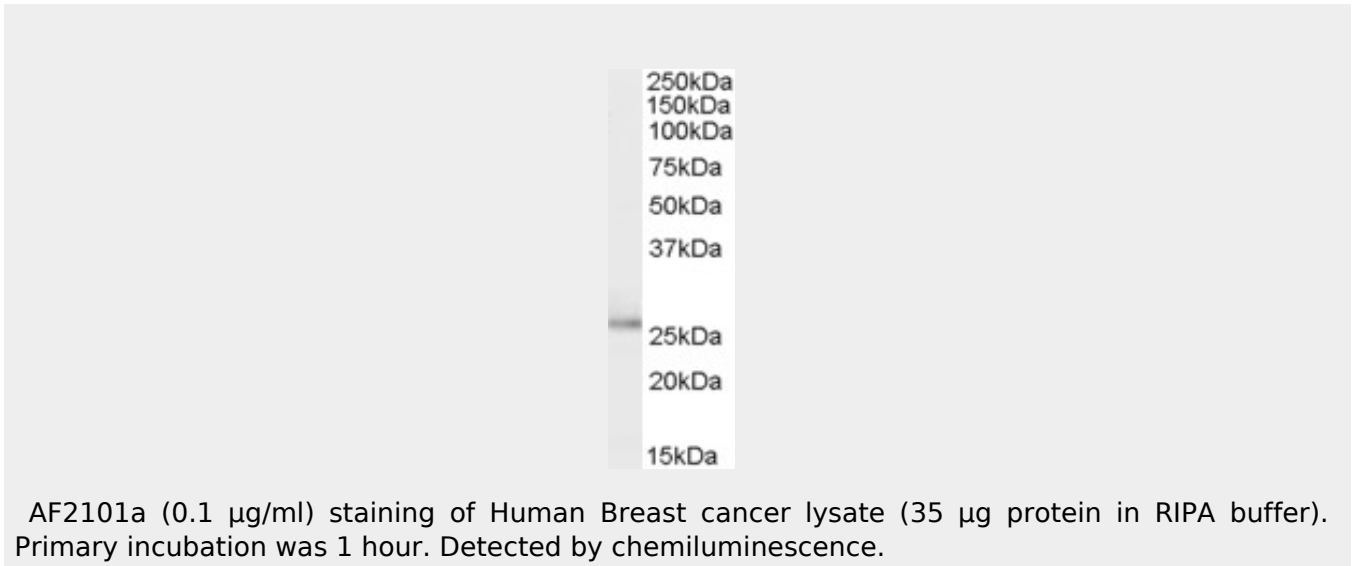
Goat Anti-TPD52L1 / D53 Antibody - Protocols

Provided below are standard protocols that you may find useful for product applications.

- [Western Blot](#)
- [Blocking Peptides](#)

- [Dot Blot](#)
- [Immunohistochemistry](#)
- [Immunofluorescence](#)
- [Immunoprecipitation](#)
- [Flow Cytometry](#)
- [Cell Culture](#)

Goat Anti-TPD52L1 / D53 Antibody - Images



Goat Anti-TPD52L1 / D53 Antibody - Background

This gene encodes a member of the tumor protein D52 (TPD52) family. The encoded protein contains a coiled-coil domain and may form homo- or hetero-dimer with TPD52 family members. The protein is reported to be involved in cell proliferation and calcium signaling. It also interacts with the mitogen-activated protein kinase kinase kinase 5 (MAP3K5/ASK1) and positively regulates MAP3K5-induced apoptosis. Multiple alternatively spliced transcript variants have been observed, but the full-length nature of some variants has not yet been determined.

Goat Anti-TPD52L1 / D53 Antibody - References

A testis-specific and testis developmentally regulated tumor protein D52 (TPD52)-like protein TPD52L3/hD55 interacts with TPD52 family proteins. Cao Q, et al. *Biochem Biophys Res Commun*, 2006 Jun 9. PMID 16631610.

Expression of tumor protein D52-like genes in childhood leukemia at diagnosis: clinical and sample considerations. Barbaric D, et al. *Leuk Res*, 2006 Nov. PMID 16620967.

A human protein-protein interaction network: a resource for annotating the proteome. Stelzl U, et al. *Cell*, 2005 Sep 23. PMID 16169070.

D53 (TPD52L1) is a cell cycle-regulated protein maximally expressed at the G2-M transition in breast cancer cells. Boutros R, et al. *Exp Cell Res*, 2005 Oct 15. PMID 16112108.

Positive regulation of apoptosis signal-regulating kinase 1 by hD53L1. Cho S, et al. *J Biol Chem*, 2004 Apr 16. PMID 14761963.