

Goat Anti-TIM50 Antibody
Peptide-affinity purified goat antibody
Catalog # AF2090a

Specification

Goat Anti-TIM50 Antibody - Product Information

Application	WB
Primary Accession	O3ZCQ8
Other Accession	NP_001001563 , 92609
Reactivity	Human
Predicted	Mouse, Rat, Dog
Host	Goat
Clonality	Polyclonal
Concentration	100ug/200ul
Isotype	IgG
Calculated MW	39646

Goat Anti-TIM50 Antibody - Additional Information

Gene ID 92609

Other Names

Mitochondrial import inner membrane translocase subunit TIM50, TIMM50, TIM50

Format

0.5 mg IgG/ml in Tris saline (20mM Tris pH7.3, 150mM NaCl), 0.02% sodium azide, with 0.5% bovine serum albumin

Storage

Maintain refrigerated at 2-8°C for up to 6 months. For long term storage store at -20°C in small aliquots to prevent freeze-thaw cycles.

Precautions

Goat Anti-TIM50 Antibody is for research use only and not for use in diagnostic or therapeutic procedures.

Goat Anti-TIM50 Antibody - Protein Information

Name TIMM50

Synonyms TIM50

Function

Essential component of the TIM23 complex, a complex that mediates the translocation of transit peptide-containing proteins across the mitochondrial inner membrane. Has some phosphatase activity in vitro; however such activity may not be relevant in vivo.

Cellular Location

Mitochondrion inner membrane; Single-pass membrane protein

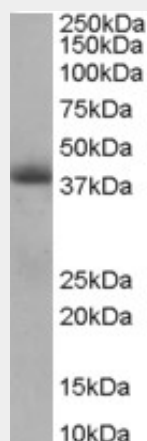
Tissue Location

Widely expressed. Expressed at higher level in brain, kidney and liver (at protein level)

Goat Anti-TIM50 Antibody - Protocols

Provided below are standard protocols that you may find useful for product applications.

- [Western Blot](#)
- [Blocking Peptides](#)
- [Dot Blot](#)
- [Immunohistochemistry](#)
- [Immunofluorescence](#)
- [Immunoprecipitation](#)
- [Flow Cytometry](#)
- [Cell Culture](#)

Goat Anti-TIM50 Antibody - Images

AF2090a staining (0.5 $\mu\text{g}/\text{ml}$) of Human Heart lysate (RIPA buffer, 35 μg total protein per lane). Primary incubated for 1 hour. Detected by western blot using chemiluminescence.

Goat Anti-TIM50 Antibody - References

Large-scale mapping of human protein-protein interactions by mass spectrometry. Ewing RM, et al. *Mol Syst Biol*, 2007. PMID 17353931.

A human protein-protein interaction network: a resource for annotating the proteome. Stelzl U, et al. *Cell*, 2005 Sep 23. PMID 16169070.

Tim50a, a nuclear isoform of the mitochondrial Tim50, interacts with proteins involved in snRNP biogenesis. Xu H, et al. *BMC Cell Biol*, 2005 Jul 11. PMID 16008839.

The status, quality, and expansion of the NIH full-length cDNA project: the Mammalian Gene Collection (MGC). Gerhard DS, et al. *Genome Res*, 2004 Oct. PMID 15489334.

Tim50, a component of the mitochondrial translocator, regulates mitochondrial integrity and cell death. Guo Y, et al. *J Biol Chem*, 2004 Jun 4. PMID 15044455.