

**Goat Anti-TCHHL1 Antibody**  
Peptide-affinity purified goat antibody  
Catalog # AF2074a

**Specification**

---

**Goat Anti-TCHHL1 Antibody - Product Information**

Application	WB
Primary Accession	<a href="#">Q5QJ38</a>
Other Accession	<a href="#">NP_001008536</a> , <a href="#">126637</a>
Reactivity	Human
Host	Goat
Clonality	Polyclonal
Concentration	100ug/200ul
Isotype	IgG
Calculated MW	99275

**Goat Anti-TCHHL1 Antibody - Additional Information**

**Gene ID** 126637

**Other Names**

Trichohyalin-like protein 1, Basalin, Protein S100-A17, S100 calcium-binding protein A17, TCHHL1, S100A17, THHL1

**Format**

0.5 mg IgG/ml in Tris saline (20mM Tris pH7.3, 150mM NaCl), 0.02% sodium azide, with 0.5% bovine serum albumin

**Storage**

Maintain refrigerated at 2-8°C for up to 6 months. For long term storage store at -20°C in small aliquots to prevent freeze-thaw cycles.

**Precautions**

Goat Anti-TCHHL1 Antibody is for research use only and not for use in diagnostic or therapeutic procedures.

**Goat Anti-TCHHL1 Antibody - Protein Information**

**Name** TCHHL1

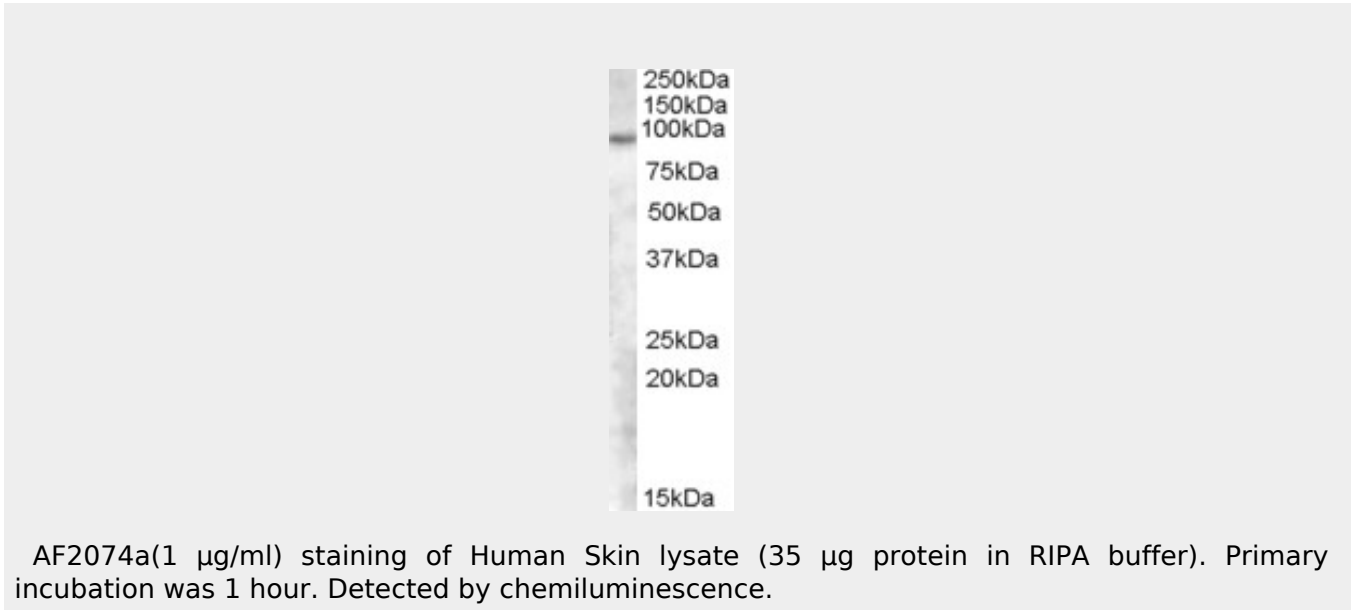
**Synonyms** S100A17, THHL1

**Goat Anti-TCHHL1 Antibody - Protocols**

Provided below are standard protocols that you may find useful for product applications.

- [Western Blot](#)
- [Blocking Peptides](#)
- [Dot Blot](#)
- [Immunohistochemistry](#)
- [Immunofluorescence](#)
- [Immunoprecipitation](#)
- [Flow Cytometry](#)
- [Cell Culture](#)

#### Goat Anti-TCHHL1 Antibody - Images



#### Goat Anti-TCHHL1 Antibody - References

Generation and initial analysis of more than 15,000 full-length human and mouse cDNA sequences. Strausberg RL, et al. Proc Natl Acad Sci U S A, 2002 Dec 24. PMID 12477932.