

Goat Anti-Spinesin / TMPRSS5 Antibody
Peptide-affinity purified goat antibody
Catalog # AF2032a

Specification

Goat Anti-Spinesin / TMPRSS5 Antibody - Product Information

Application	WB, IHC
Primary Accession	O9H3S3
Other Accession	NP_110397 , 80975
Reactivity	Human, Mouse, Rat
Predicted	Dog
Host	Goat
Clonality	Polyclonal
Concentration	100ug/200ul
Isotype	IgG
Calculated MW	49560

Goat Anti-Spinesin / TMPRSS5 Antibody - Additional Information

Gene ID 80975

Other Names

Transmembrane protease serine 5, 3.4.21.-, Spinesin, TMPRSS5

Format

0.5 mg IgG/ml in Tris saline (20mM Tris pH7.3, 150mM NaCl), 0.02% sodium azide, with 0.5% bovine serum albumin

Storage

Maintain refrigerated at 2-8°C for up to 6 months. For long term storage store at -20°C in small aliquots to prevent freeze-thaw cycles.

Precautions

Goat Anti-Spinesin / TMPRSS5 Antibody is for research use only and not for use in diagnostic or therapeutic procedures.

Goat Anti-Spinesin / TMPRSS5 Antibody - Protein Information

Name TMPRSS5

Function

May play a role in hearing.

Cellular Location

Cell membrane; Single-pass type II membrane protein

Tissue Location

Brain-specific. Predominantly expressed in neurons, in their axons, and at the synapses of motoneurons in the spinal cord

Goat Anti-Spinesin / TMPRSS5 Antibody - Protocols

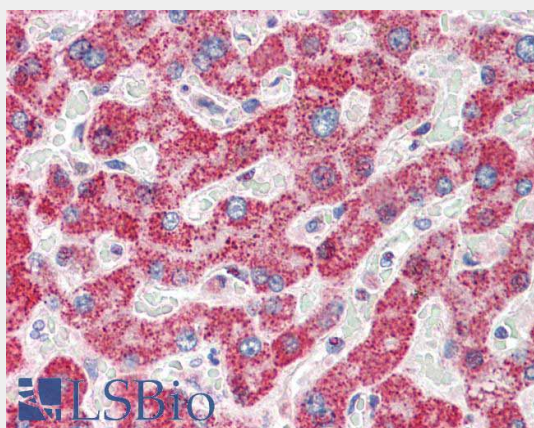
Provided below are standard protocols that you may find useful for product applications.

- [Western Blot](#)
- [Blocking Peptides](#)
- [Dot Blot](#)
- [Immunohistochemistry](#)
- [Immunofluorescence](#)
- [Immunoprecipitation](#)
- [Flow Cytometry](#)
- [Cell Culture](#)

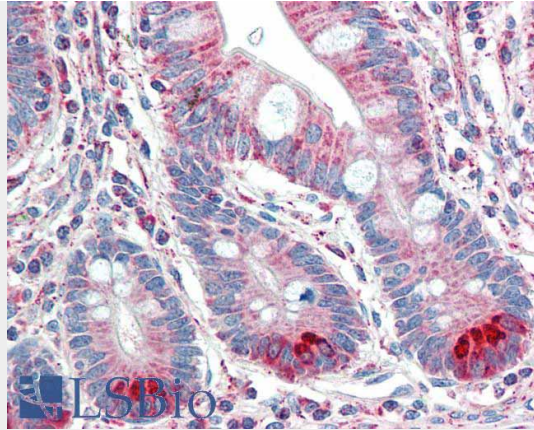
Goat Anti-Spinesin / TMPRSS5 Antibody - Images



AF2032a staining (0.5 $\mu\text{g/ml}$) of Human Brain (Cerebrum) lysate (RIPA buffer, 35 μg total protein per lane). Primary incubated for 1 hour. Detected by chemiluminescence.



AF2032a (5 $\mu\text{g/ml}$) staining of paraffin embedded Human Liver. Steamed antigen retrieval with citrate buffer pH 6, AP-staining.



AF2032a (5 µg/ml) staining of paraffin embedded Human Small Intestine. Steamed antigen retrieval with citrate buffer pH 6, AP-staining.

Goat Anti-Spinesin / TMPRSS5 Antibody - Background

This gene encodes a protein that belongs to the serine protease family. Serine proteases are known to be involved in many physiological and pathological processes.

Goat Anti-Spinesin / TMPRSS5 Antibody - References

ADAM-9 is an insulin-like growth factor binding protein-5 protease produced and secreted by human osteoblasts. Mohan S, et al. *Biochemistry*, 2002 Dec 24. PMID 12484779.
Generation and initial analysis of more than 15,000 full-length human and mouse cDNA sequences. Strausberg RL, et al. *Proc Natl Acad Sci U S A*, 2002 Dec 24. PMID 12477932.
Spinesin/TMPRSS5, a novel transmembrane serine protease, cloned from human spinal cord. Yamaguchi N, et al. *J Biol Chem*, 2002 Mar 1. PMID 11741986.