

Goat Anti-SMAD9 Antibody
Peptide-affinity purified goat antibody
Catalog # AF2005a

Specification

Goat Anti-SMAD9 Antibody - Product Information

Application	EIA, WB, IHC
Primary Accession	O15198
Other Accession	NP_005896 , 4093
Reactivity	Human
Predicted	Mouse, Rat, Dog
Host	Goat
Clonality	Polyclonal
Concentration	0.5 mg/ml
Isotype	IgG
Calculated MW	52493

Goat Anti-SMAD9 Antibody - Additional Information

Gene ID 4093

Other Names

Mothers against decapentaplegic homolog 9, MAD homolog 9, Mothers against DPP homolog 9, Madh6, SMAD family member 9, SMAD 9, Smad9, SMAD9, MADH6, MADH9

Format

0.5 mg IgG/ml in Tris saline (20mM Tris pH7.3, 150mM NaCl), 0.02% sodium azide, with 0.5% bovine serum albumin

Storage

Maintain refrigerated at 2-8°C for up to 6 months. For long term storage store at -20°C in small aliquots to prevent freeze-thaw cycles.

Precautions

Goat Anti-SMAD9 Antibody is for research use only and not for use in diagnostic or therapeutic procedures.

Goat Anti-SMAD9 Antibody - Protein Information

Name SMAD9

Synonyms MADH6, MADH9, SMAD8 {ECO:0000303|PubMed:

Function

Transcriptional modulator activated by BMP (bone morphogenetic proteins) type 1 receptor kinase. SMAD9 is a receptor- regulated SMAD (R-SMAD).

Cellular Location

Cytoplasm. Nucleus. Note=In the cytoplasm in the absence of ligand. Migration to the nucleus when complexed with SMAD4 (By similarity).

Tissue Location

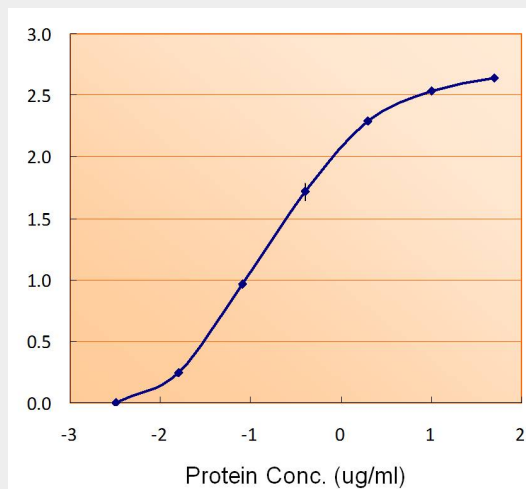
Expressed in heart, brain, placenta, lung, skeletal muscle, prostate, testis, ovary and small intestine. Also expressed in fetal brain, lung and kidney

Goat Anti-SMAD9 Antibody - Protocols

Provided below are standard protocols that you may find useful for product applications.

- [Western Blot](#)
- [Blocking Peptides](#)
- [Dot Blot](#)
- [Immunohistochemistry](#)
- [Immunofluorescence](#)
- [Immunoprecipitation](#)
- [Flow Cytometry](#)
- [Cell Culture](#)

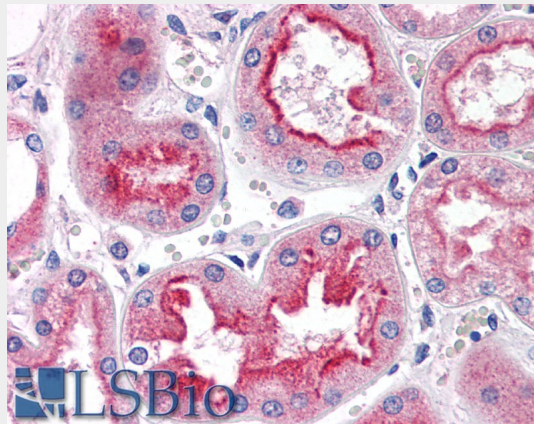
Goat Anti-SMAD9 Antibody - Images



AF2005a (1.5ug/ml) as the reporter with EB002022 as the capture rabbit antibody (2.5ug/ml).



AF2005a (0.3µg/ml) staining of Human Skin lysate (35µg protein in RIPA buffer). Detected by chemiluminescence.



AF2005a (5µg/ml) staining of paraffin embedded Human Kidney. Steamed antigen retrieval with citrate buffer pH 6, AP-staining.

Goat Anti-SMAD9 Antibody - Background

The protein encoded by this gene is a member of the SMAD family, which transduces signals from TGF-beta family members. The encoded protein is activated by bone morphogenetic proteins and interacts with SMAD4. Two transcript variants encoding different isoforms have been found for this gene.

Goat Anti-SMAD9 Antibody - References

Personalized smoking cessation: interactions between nicotine dose, dependence and quit-success genotype score. Rose JE, et al. *Mol Med*, 2010 Jul-Aug. PMID 20379614.
BMP4-Smad signaling pathway mediates adriamycin-induced premature senescence in lung cancer cells. Su D, et al. *J Biol Chem*, 2009 May 1. PMID 19269967.
Serotonin induces Rho/ROCK-dependent activation of Smads 1/5/8 in pulmonary artery smooth muscle cells. Liu Y, et al. *FASEB J*, 2009 Jul. PMID 19244313.
A new nonsense mutation of SMAD8 associated with pulmonary arterial hypertension. Shintani M, et al. *J Med Genet*, 2009 May. PMID 19211612.
Holding their own: the noncanonical roles of Smad proteins. Hoover LL, et al. *Sci Signal*, 2008 Nov 18. PMID 19018011.