

Goat Anti-SEPT6 Antibody
Peptide-affinity purified goat antibody
Catalog # AF1970a**Specification**

Goat Anti-SEPT6 Antibody - Product Information

Application	WB, IHC
Primary Accession	Q14141
Other Accession	NP_665801 , 23157
Reactivity	Human
Predicted	Dog
Host	Goat
Clonality	Polyclonal
Concentration	100ug/200ul
Isotype	IgG
Calculated MW	49717

Goat Anti-SEPT6 Antibody - Additional Information**Gene ID** 23157**Other Names**

Septin-6, SEPT6, KIAA0128, SEP2

Format

0.5 mg IgG/ml in Tris saline (20mM Tris pH7.3, 150mM NaCl), 0.02% sodium azide, with 0.5% bovine serum albumin

Storage

Maintain refrigerated at 2-8°C for up to 6 months. For long term storage store at -20°C in small aliquots to prevent freeze-thaw cycles.

Precautions

Goat Anti-SEPT6 Antibody is for research use only and not for use in diagnostic or therapeutic procedures.

Goat Anti-SEPT6 Antibody - Protein Information**Name** SEPTIN6 ([HGNC:15848](#))**Synonyms** KIAA0128, SEP2, SEPT6**Function**

Filament-forming cytoskeletal GTPase. Required for normal organization of the actin cytoskeleton. Involved in cytokinesis. May play a role in HCV RNA replication. Forms a filamentous structure with SEPTIN12, SEPTIN6, SEPTIN2 and probably SEPTIN4 at the sperm annulus which is required for the structural integrity and motility of the sperm tail during postmeiotic differentiation (PubMed:25588830).

Cellular Location

Cytoplasm. Cytoplasm, cytoskeleton, spindle Chromosome, centromere, kinetochore Cleavage furrow. Midbody. Cell projection, cilium, flagellum. Note=In metaphase cells, localized within the microtubule spindle. At the metaphase plate, in close apposition to the kinetochores of the congressed chromosomes. In cells undergoing cytokinesis, localized to the midbody, the ingressing cleavage furrow, and the central spindle. Found in the sperm annulus (PubMed:25588830).

Tissue Location

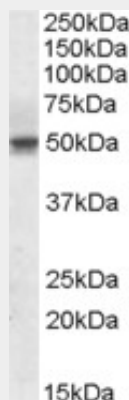
Widely expressed..

Goat Anti-SEPT6 Antibody - Protocols

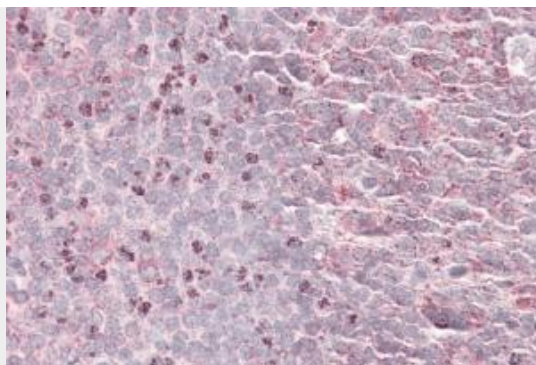
Provided below are standard protocols that you may find useful for product applications.

- [Western Blot](#)
- [Blocking Peptides](#)
- [Dot Blot](#)
- [Immunohistochemistry](#)
- [Immunofluorescence](#)
- [Immunoprecipitation](#)
- [Flow Cytometry](#)
- [Cell Culture](#)

Goat Anti-SEPT6 Antibody - Images



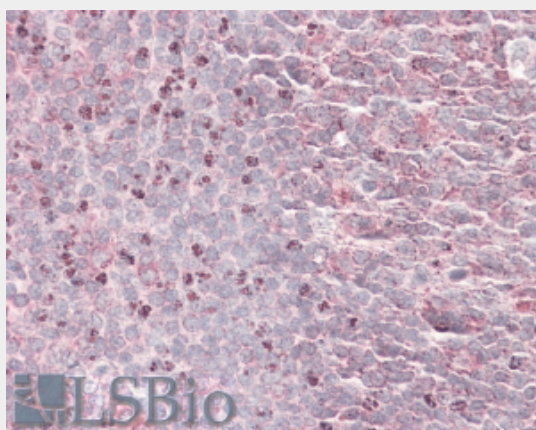
AF1970a (1 µg/ml) staining of Human Testis lysate (35 µg protein in RIPA buffer). Primary incubation was 1 hour. Detected by chemiluminescence.



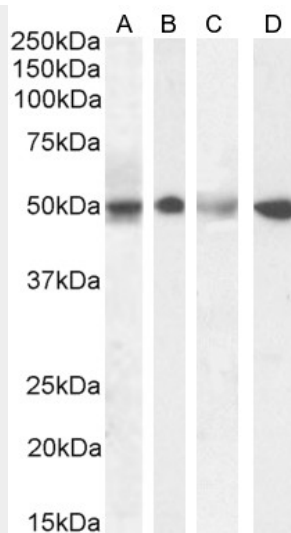
AF1970a (3.8 µg/ml) staining of paraffin embedded Human Tonsil. Steamed antigen retrieval with citrate buffer pH 6, AP-staining.



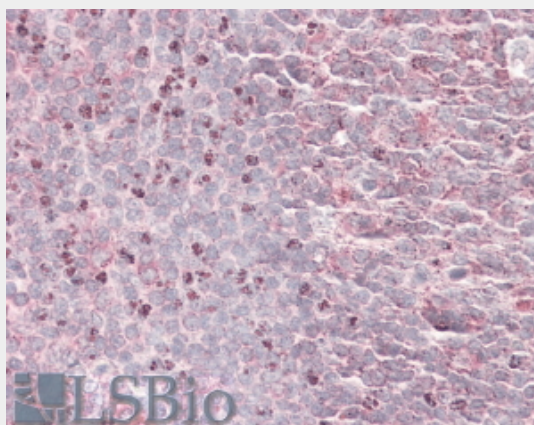
EB08932 (1µg/ml) staining of Human Testis lysate (35µg protein in RIPA buffer). Primary incubation was 1 hour. Detected by chemiluminescence.



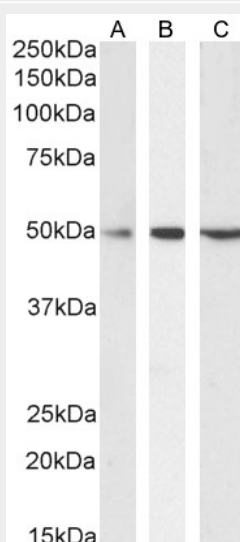
EB08932 (3.8µg/ml) staining of paraffin embedded Human Tonsil. Steamed antigen retrieval with citrate buffer pH 6, AP-staining.



EB08932 (1 μ g/ml) staining of Human Testis (A), (0.1 μ g/ml) Duodenum (B), (0.5 μ g/ml) Kidney (C) and (0.3 μ g/ml) Tonsil (D) lysate (35 μ g protein in RIPA buffer). Detected by chemiluminescence.



EB08932 (3.8 μ g/ml) staining of paraffin embedded Human Tonsil. Steamed antigen retrieval with citrate buffer pH 6, AP-staining.



EB08932 (0.1 μ g/ml) staining of Daudi (A), Jurkat (B) and MOLT4 (C) cell lysate (35 μ g protein in RIPA buffer). Detected by chemiluminescence.

Goat Anti-SEPT6 Antibody - Background

This gene is a member of the septin family of GTPases. Members of this family are required for cytokinesis. One version of pediatric acute myeloid leukemia is the result of a reciprocal translocation between chromosomes 11 and X, with the breakpoint associated with the genes encoding the mixed-lineage leukemia and septin 2 proteins. This gene encodes four transcript variants encoding three distinct isoforms. An additional transcript variant has been identified, but its biological validity has not been determined.

Goat Anti-SEPT6 Antibody - References

SEPT12 interacts with SEPT6 and this interaction alters the filament structure of SEPT6 in Hela cells. Ding X, et al. J Biochem Mol Biol, 2007 Nov 30. PMID 18047794.
Toward a confocal subcellular atlas of the human proteome. Barbe L, et al. Mol Cell Proteomics, 2008 Mar. PMID 18029348.
Septins regulate actin organization and cell-cycle arrest through nuclear accumulation of NCK mediated by SOCS7. Kremer BE, et al. Cell, 2007 Sep 7. PMID 17803907.
Structural insight into filament formation by mammalian septins. Sirajuddin M, et al. Nature, 2007 Sep 20. PMID 17637674.
An RNA-binding protein, hnRNP A1, and a scaffold protein, septin 6, facilitate hepatitis C virus replication. Kim CS, et al. J Virol, 2007 Apr. PMID 17229681.