

Goat Anti-PRPF31 Antibody
Peptide-affinity purified goat antibody
Catalog # AF1870a

Specification

Goat Anti-PRPF31 Antibody - Product Information

Application	WB
Primary Accession	Q8WWY3
Other Accession	NP_056444 , 26121 , 68988 (mouse)
Reactivity	Human
Predicted	Mouse, Rat, Pig, Dog
Host	Goat
Clonality	Polyclonal
Concentration	100ug/200ul
Isotype	IgG
Calculated MW	55456

Goat Anti-PRPF31 Antibody - Additional Information

Gene ID 26121

Other Names

U4/U6 small nuclear ribonucleoprotein Prp31, Pre-mRNA-processing factor 31, Serologically defined breast cancer antigen NY-BR-99, U4/U6 snRNP 61 kDa protein, Protein 61K, hPrp31, PRPF31, PRP31

Format

0.5 mg IgG/ml in Tris saline (20mM Tris pH7.3, 150mM NaCl), 0.02% sodium azide, with 0.5% bovine serum albumin

Storage

Maintain refrigerated at 2-8°C for up to 6 months. For long term storage store at -20°C in small aliquots to prevent freeze-thaw cycles.

Precautions

Goat Anti-PRPF31 Antibody is for research use only and not for use in diagnostic or therapeutic procedures.

Goat Anti-PRPF31 Antibody - Protein Information

Name PRPF31 ([HGNC:15446](#))

Synonyms PRP31

Function

Involved in pre-mRNA splicing as component of the spliceosome (PubMed:11867543, PubMed:20118938, PubMed:28781166). Required for the assembly of the U4/U5/U6 tri-snRNP complex, one of the building blocks of the spliceosome (PubMed:11867543).

Cellular Location

Nucleus. Nucleus speckle. Nucleus, Cajal body. Note=Predominantly found in speckles and in Cajal bodies.

Tissue Location

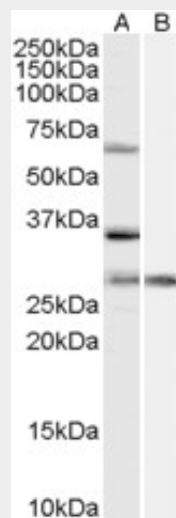
Ubiquitously expressed.

Goat Anti-PRPF31 Antibody - Protocols

Provided below are standard protocols that you may find useful for product applications.

- [Western Blot](#)
- [Blocking Peptides](#)
- [Dot Blot](#)
- [Immunohistochemistry](#)
- [Immunofluorescence](#)
- [Immunoprecipitation](#)
- [Flow Cytometry](#)
- [Cell Culture](#)

Goat Anti-PRPF31 Antibody - Images



AF1870a (1 µg/ml) staining of HeLa cell lysate (35 µg protein in RIPA buffer) with (B) and without (A) blocking with the immunising peptide. Primary incubation was 1 hour. Detected by chemiluminescence.

Goat Anti-PRPF31 Antibody - Background

This gene encodes a component of the spliceosome complex and is one of several retinitis pigmentosa-causing genes. When the gene product is added to the spliceosome complex, activation occurs.

Goat Anti-PRPF31 Antibody - References

Human PRP4 kinase is required for stable tri-snRNP association during spliceosomal B complex formation. Schneider M, et al. Nat Struct Mol Biol, 2010 Feb. PMID 20118938.

Defining the human deubiquitinating enzyme interaction landscape. Sowa ME, et al. Cell, 2009 Jul 23. PMID 19615732.

Study of gene-targeted mouse models of splicing factor gene Prpf31 implicated in human autosomal dominant retinitis pigmentosa (RP). Bujakowska K, et al. Invest Ophthalmol Vis Sci, 2009 Dec. PMID 19578015.

Novel PRPF31 and PRPH2 mutations and co-occurrence of PRPF31 and RHO mutations in Chinese patients with retinitis pigmentosa. Lim KP, et al. Arch Ophthalmol, 2009 Jun. PMID 19506198.

PRPF31 alternative splicing and expression in human retina. Tanackovic G, et al. Ophthalmic Genet, 2009 Jun. PMID 19373678.