

**Goat Anti-Pescadillo Antibody**  
Peptide-affinity purified goat antibody  
Catalog # AF1815a

**Specification**

---

**Goat Anti-Pescadillo Antibody - Product Information**

Application	WB, IHC
Primary Accession	<a href="#">O00541</a>
Other Accession	<a href="#">NP_055118</a> , <a href="#">23481</a> , <a href="#">64934 (mouse)</a>
Reactivity	Human
Predicted	Mouse, Pig
Host	Goat
Clonality	Polyclonal
Concentration	100ug/200ul
Isotype	IgG
Calculated MW	68003

**Goat Anti-Pescadillo Antibody - Additional Information**

**Gene ID** 23481

**Other Names**

Pescadillo homolog {ECO:0000255|HAMAP-Rule:MF\_03028}, PES1  
{ECO:0000255|HAMAP-Rule:MF\_03028}

**Format**

0.5 mg IgG/ml in Tris saline (20mM Tris pH7.3, 150mM NaCl), 0.02% sodium azide, with 0.5% bovine serum albumin

**Storage**

Maintain refrigerated at 2-8°C for up to 6 months. For long term storage store at -20°C in small aliquots to prevent freeze-thaw cycles.

**Precautions**

Goat Anti-Pescadillo Antibody is for research use only and not for use in diagnostic or therapeutic procedures.

**Goat Anti-Pescadillo Antibody - Protein Information**

**Name** PES1 {ECO:0000255|HAMAP-Rule:MF\_03028}

**Function**

Component of the PeBoW complex, which is required for maturation of 28S and 5.8S ribosomal RNAs and formation of the 60S ribosome.

**Cellular Location**

Nucleus, nucleolus. Nucleus, nucleoplasm. Chromosome. Note=Appears to localize to the

periphery of metaphase chromosomes during mitosis and to the prenucleolar bodies that form in mitotic cells prior to the actual nucleoli. {ECO:0000255|HAMAP- Rule:MF\_03028}

#### Tissue Location

Significant levels are detected in a variety of cancer cell lines, including glioblastoma, breast carcinoma, colon carcinoma and cervical carcinoma cells. Levels are abnormally elevated in malignant tumors of astrocytic origin

#### Goat Anti-Pescadillo Antibody - Protocols

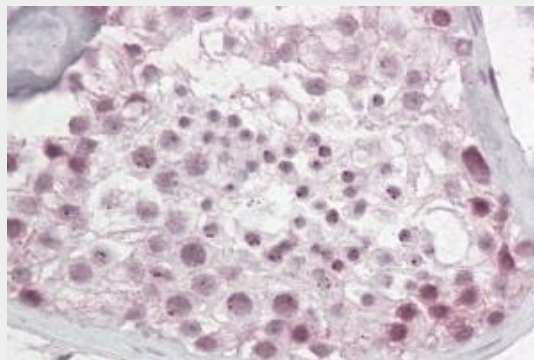
Provided below are standard protocols that you may find useful for product applications.

- [Western Blot](#)
- [Blocking Peptides](#)
- [Dot Blot](#)
- [Immunohistochemistry](#)
- [Immunofluorescence](#)
- [Immunoprecipitation](#)
- [Flow Cytometry](#)
- [Cell Culture](#)

#### Goat Anti-Pescadillo Antibody - Images



AF1815a (1  $\mu$ g/ml) staining of Hela lysate (35  $\mu$ g protein in RIPA buffer). Primary incubation was 1 hour. Detected by chemiluminescence.



AF1815a (3.8 µg/ml) staining of paraffin embedded Human Testis. Steamed antigen retrieval with citrate buffer pH 6, AP-staining.

### **Goat Anti-Pescadillo Antibody - Background**

This gene encodes a protein that is abnormally elevated in malignant tumors of astrocytic origin. It is a strongly conserved gene containing a BRCT domain that is essential for the activity of this gene product. The gene plays a crucial role in cell proliferation and may be necessary for oncogenic transformation and tumor progression.

### **Goat Anti-Pescadillo Antibody - References**

B23 interacts with PES1 and is involved in nucleolar localization of PES1. Zhang J, et al. Acta Biochim Biophys Sin (Shanghai), 2009 Dec. PMID 20011973.  
Down-regulation of pescadillo inhibits proliferation and tumorigenicity of breast cancer cells. Li J, et al. Cancer Sci, 2009 Dec. PMID 19764998.  
Large-scale mapping of human protein-protein interactions by mass spectrometry. Ewing RM, et al. Mol Syst Biol, 2007. PMID 17353931.  
Interdependence of Pes1, Bop1, and WDR12 controls nucleolar localization and assembly of the PeBoW complex required for maturation of the 60S ribosomal subunit. Rohmoser M, et al. Mol Cell Biol, 2007 May. PMID 17353269.  
Dominant-negative Pes1 mutants inhibit ribosomal RNA processing and cell proliferation via incorporation into the PeBoW-complex. Grimm T, et al. Nucleic Acids Res, 2006. PMID 16738141.