

Goat Anti-Osteopontin / SPP1 Antibody
Peptide-affinity purified goat antibody
Catalog # AF1765a**Specification**

Goat Anti-Osteopontin / SPP1 Antibody - Product Information

Application	WB
Primary Accession	P10451
Other Accession	NP_001035149 , 6696 , 20750 (mouse)
Reactivity	Human
Predicted	Mouse, Rat, Dog
Host	Goat
Clonality	Polyclonal
Concentration	100ug/200ul
Isotype	IgG
Calculated MW	35423

Goat Anti-Osteopontin / SPP1 Antibody - Additional Information**Gene ID** 6696**Other Names**

Osteopontin, Bone sialoprotein 1, Nephropontin, Secreted phosphoprotein 1, SPP-1, Urinary stone protein, Uropontin, SPP1, BNSP, OPN

Format

0.5 mg IgG/ml in Tris saline (20mM Tris pH7.3, 150mM NaCl), 0.02% sodium azide, with 0.5% bovine serum albumin

Storage

Maintain refrigerated at 2-8°C for up to 6 months. For long term storage store at -20°C in small aliquots to prevent freeze-thaw cycles.

Precautions

Goat Anti-Osteopontin / SPP1 Antibody is for research use only and not for use in diagnostic or therapeutic procedures.

Goat Anti-Osteopontin / SPP1 Antibody - Protein Information**Name** SPP1**Synonyms** BNSP, OPN**Function**

Major non-collagenous bone protein that binds tightly to hydroxyapatite. Appears to form an integral part of the mineralized matrix. Probably important to cell-matrix interaction.

Cellular Location

Secreted

Tissue Location

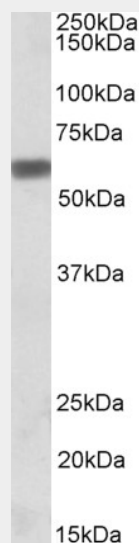
Detected in cerebrospinal fluid and urine (at protein level) (PubMed:25326458, PubMed:36213313, PubMed:37453717) Bone. Found in plasma.

Goat Anti-Osteopontin / SPP1 Antibody - Protocols

Provided below are standard protocols that you may find useful for product applications.

- [Western Blot](#)
- [Blocking Peptides](#)
- [Dot Blot](#)
- [Immunohistochemistry](#)
- [Immunofluorescence](#)
- [Immunoprecipitation](#)
- [Flow Cytometry](#)
- [Cell Culture](#)

Goat Anti-Osteopontin / SPP1 Antibody - Images



AF1765a (0.5 µg/ml) staining of MOLT4 lysate (35 µg protein in RIPA buffer). Primary incubation was 1 hour. Detected by chemiluminescence.

Goat Anti-Osteopontin / SPP1 Antibody - References

Maternal genes and facial clefts in offspring: a comprehensive search for genetic associations in two population-based cleft studies from Scandinavia. Jugessur A, et al. PLoS One, 2010 Jul 9. PMID 20634891.

Evaluation of candidate stromal epithelial cross-talk genes identifies association between risk of serous ovarian cancer and TERT, a cancer susceptibility hot-spot. Johnatty SE, et al. PLoS Genet, 2010 Jul 8. PMID 20628624.

Variation at the NFATC2 Locus Increases the Risk of Thiazolinedione-Induced Edema in the Diabetes REduction Assessment with ramipril and rosiglitazone Medication (DREAM) Study. Bailey SD, et al. Diabetes Care, 2010 Jul 13. PMID 20628086.

Nectin-like molecule 1 inhibits the migration and invasion of U251 glioma cells by regulating the

expression of an extracellular matrix protein osteopontin. Yin B, et al. Chin Med Sci J, 2010 Jun. PMID 20598232.

Osteopontin (OPN) expression in thyroid carcinoma. Briese J, et al. Anticancer Res, 2010 May. PMID 20592361.