

Goat Anti-NHERF2 (isoform a) Antibody
Peptide-affinity purified goat antibody
Catalog # AF1731a

Specification

Goat Anti-NHERF2 (isoform a) Antibody - Product Information

Application	IHC, WB
Primary Accession	Q15599
Other Accession	NP_001123484 , 9351
Reactivity	Human
Host	Goat
Clonality	Polyclonal
Concentration	100ug/200ul
Isotype	IgG
Calculated MW	37414

Goat Anti-NHERF2 (isoform a) Antibody - Additional Information

Gene ID 9351

Other Names

Na(+)/H(+) exchange regulatory cofactor NHE-RF2, NHERF-2, NHE3 kinase A regulatory protein E3KARP, SRY-interacting protein 1, SIP-1, Sodium-hydrogen exchanger regulatory factor 2, Solute carrier family 9 isoform A3 regulatory factor 2, Tyrosine kinase activator protein 1, TKA-1, SLC9A3R2, NHERF2

Format

0.5 mg IgG/ml in Tris saline (20mM Tris pH7.3, 150mM NaCl), 0.02% sodium azide, with 0.5% bovine serum albumin

Storage

Maintain refrigerated at 2-8°C for up to 6 months. For long term storage store at -20°C in small aliquots to prevent freeze-thaw cycles.

Precautions

Goat Anti-NHERF2 (isoform a) Antibody is for research use only and not for use in diagnostic or therapeutic procedures.

Goat Anti-NHERF2 (isoform a) Antibody - Protein Information

Name NHERF2 ([HGNC:11076](#))

Synonyms SLC9A3R2

Function

Scaffold protein that connects plasma membrane proteins with members of the ezrin/moesin/radixin family and thereby helps to link them to the actin cytoskeleton and to

regulate their surface expression. Necessary for cAMP-mediated phosphorylation and inhibition of SLC9A3 (PubMed:18829453). May also act as scaffold protein in the nucleus.

Cellular Location

Endomembrane system; Peripheral membrane protein. Nucleus. Apical cell membrane
Note=Localizes with EZR and PODXL at the apical cell membrane of glomerular epithelium cells and the sides of the food processes (By similarity). Nuclear, in a punctate pattern.

Tissue Location

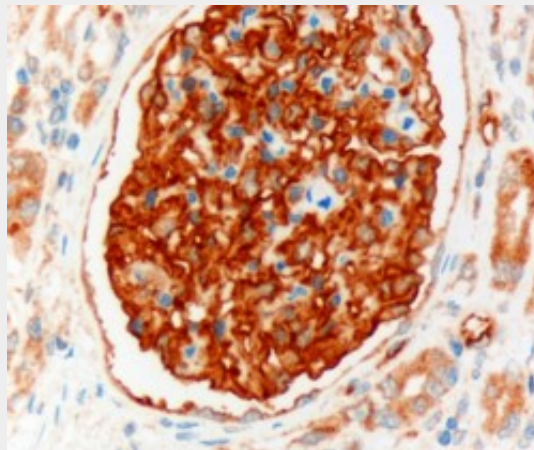
Widely expressed.

Goat Anti-NHERF2 (isoform a) Antibody - Protocols

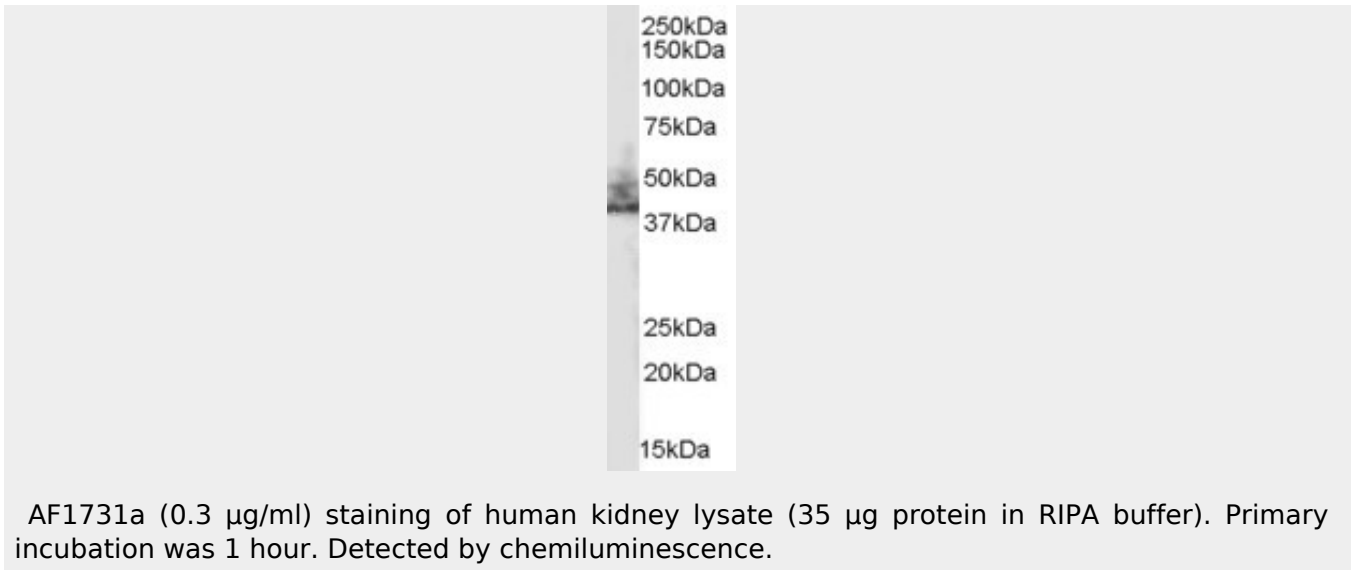
Provided below are standard protocols that you may find useful for product applications.

- [Western Blot](#)
- [Blocking Peptides](#)
- [Dot Blot](#)
- [Immunohistochemistry](#)
- [Immunofluorescence](#)
- [Immunoprecipitation](#)
- [Flow Cytometry](#)
- [Cell Culture](#)

Goat Anti-NHERF2 (isoform a) Antibody - Images



AF1731a (3 µg/ml) staining of paraffin embedded Human Kidney. Microwaved antigen retrieval with Tris/EDTA buffer pH9, HRP-staining.



Goat Anti-NHERF2 (isoform a) Antibody - Background

NHE3 (SLC9A3; MIM 182307) is a sodium/hydrogen exchanger in the brush border membrane of the proximal tubule, small intestine, and colon that plays a major role in transepithelial sodium absorption. SLC9A3R2, as well as SLC9A3R1 (MIM 604990) and protein kinase A phosphorylation, may play a role in NHE3 regulation.

Goat Anti-NHERF2 (isoform a) Antibody - References

Na/H exchanger regulatory factors control parathyroid hormone receptor signaling by facilitating differential activation of G(alpha) protein subunits. Wang B, et al. J Biol Chem, 2010 Aug 27. PMID 20562104.

Defining the human deubiquitinating enzyme interaction landscape. Sowa ME, et al. Cell, 2009 Jul 23. PMID 19615732.

MCC, a new interacting protein for Scrib, is required for cell migration in epithelial cells. Arnaud C, et al. FEBS Lett, 2009 Jul 21. PMID 19555689.

Lysophosphatidic acid 2 receptor-mediated supramolecular complex formation regulates its antiapoptotic effect. E S, et al. J Biol Chem, 2009 May 22. PMID 19293149.

Regulation of protein expression and function of octn2 in forskolin-induced syncytialization in BeWo Cells. Huang FD, et al. Placenta, 2009 Feb. PMID 19091402.