

Goat Anti-NET1 / ARHGEF8 (C Terminus) Antibody
Peptide-affinity purified goat antibody
Catalog # AF1717a

Specification

Goat Anti-NET1 / ARHGEF8 (C Terminus) Antibody - Product Information

| | |
|-------------------|---|
| Application | IHC |
| Primary Accession | O7Z628 |
| Other Accession | NP_005854 , 10276 |
| Reactivity | Human |
| Predicted | Mouse |
| Host | Goat |
| Clonality | Polyclonal |
| Concentration | 100ug/200ul |
| Isotype | IgG |
| Calculated MW | 67740 |

Goat Anti-NET1 / ARHGEF8 (C Terminus) Antibody - Additional Information

Gene ID 10276

Other Names

Neuroepithelial cell-transforming gene 1 protein, Proto-oncogene p65 Net1, Rho guanine nucleotide exchange factor 8, NET1, ARHGEF8

Format

0.5 mg IgG/ml in Tris saline (20mM Tris pH7.3, 150mM NaCl), 0.02% sodium azide, with 0.5% bovine serum albumin

Storage

Maintain refrigerated at 2-8°C for up to 6 months. For long term storage store at -20°C in small aliquots to prevent freeze-thaw cycles.

Precautions

Goat Anti-NET1 / ARHGEF8 (C Terminus) Antibody is for research use only and not for use in diagnostic or therapeutic procedures.

Goat Anti-NET1 / ARHGEF8 (C Terminus) Antibody - Protein Information

Name NET1

Synonyms ARHGEF8

Function

Acts as a guanine nucleotide exchange factor (GEF) for RhoA GTPase. May be involved in activation of the SAPK/JNK pathway Stimulates genotoxic stress-induced RHOB activity in breast cancer cells leading to their cell death.

Cellular Location

Cytoplasm. Nucleus.

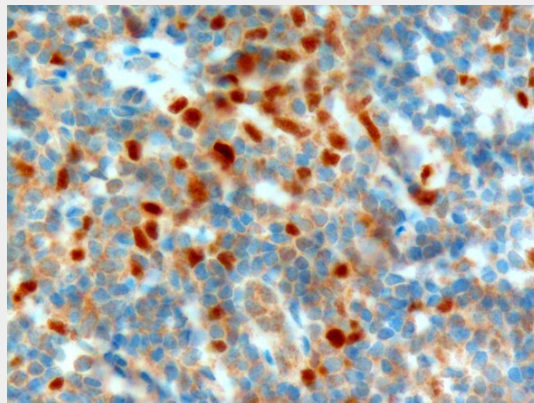
Tissue Location

Widely expressed..

Goat Anti-NET1 / ARHGEF8 (C Terminus) Antibody - Protocols

Provided below are standard protocols that you may find useful for product applications.

- [Western Blot](#)
- [Blocking Peptides](#)
- [Dot Blot](#)
- [Immunohistochemistry](#)
- [Immunofluorescence](#)
- [Immunoprecipitation](#)
- [Flow Cytometry](#)
- [Cell Culture](#)

Goat Anti-NET1 / ARHGEF8 (C Terminus) Antibody - Images

AF1717a (1 µg/ml) staining of paraffin embedded Human Tonsil. Microwaved antigen retrieval with citrate buffer pH 6, HRP-staining.

Goat Anti-NET1 / ARHGEF8 (C Terminus) Antibody - References

Defining the human deubiquitinating enzyme interaction landscape. Sowa ME, et al. Cell, 2009 Jul 23. PMID 19615732.

Interaction of the RhoA exchange factor Net1 with discs large homolog 1 protects it from proteasome-mediated degradation and potentiates Net1 activity. Carr HS, et al. J Biol Chem, 2009 Sep 4. PMID 19586902.

Coexpression of alpha6beta4 integrin and guanine nucleotide exchange factor Net1 identifies node-positive breast cancer patients at high risk for distant metastasis. Gilcrease MZ, et al. Cancer Epidemiol Biomarkers Prev, 2009 Jan. PMID 19124484.

NET1-mediated RhoA activation facilitates lysophosphatidic acid-induced cell migration and invasion in gastric cancer. Murray D, et al. Br J Cancer, 2008 Oct 21. PMID 18827818.

A bacterial cytotoxin identifies the RhoA exchange factor Net1 as a key effector in the response to DNA damage. Guerra L, et al. PLoS One, 2008 May 28. PMID 18509476.