

**Goat Anti-MIF Antibody**  
Peptide-affinity purified goat antibody  
Catalog # AF1672a

**Specification**

---

**Goat Anti-MIF Antibody - Product Information**

Application	EIA, WB, IHC
Primary Accession	<a href="#">P14174</a>
Other Accession	<a href="#">NP_002406</a> , <a href="#">4282</a>
Reactivity	Human
Predicted	Mouse, Rat
Host	Goat
Clonality	Polyclonal
Concentration	0.5 mg/ml
Isotype	IgG
Calculated MW	12476

**Goat Anti-MIF Antibody - Additional Information**

**Gene ID** 4282

**Other Names**

Macrophage migration inhibitory factor, MIF, 5.3.2.1, Glycosylation-inhibiting factor, GIF, L-dopachrome isomerase, L-dopachrome tautomerase, 5.3.3.12, Phenylpyruvate tautomerase, MIF, GLIF, MMIF

**Format**

0.5 mg IgG/ml in Tris saline (20mM Tris pH7.3, 150mM NaCl), 0.02% sodium azide, with 0.5% bovine serum albumin

**Storage**

Maintain refrigerated at 2-8°C for up to 6 months. For long term storage store at -20°C in small aliquots to prevent freeze-thaw cycles.

**Precautions**

Goat Anti-MIF Antibody is for research use only and not for use in diagnostic or therapeutic procedures.

**Goat Anti-MIF Antibody - Protein Information**

**Name** MIF {ECO:0000303|PubMed:2552447, ECO:0000312|HGNC:HGNC:7097}

**Function**

Pro-inflammatory cytokine involved in the innate immune response to bacterial pathogens (PubMed:<a href="http://www.uniprot.org/citations/15908412" target="\_blank">15908412</a>, PubMed:<a href="http://www.uniprot.org/citations/17443469" target="\_blank">17443469</a>, PubMed:<a href="http://www.uniprot.org/citations/23776208" target="\_blank">23776208</a>).

The expression of MIF at sites of inflammation suggests a role as mediator in regulating the function of macrophages in host defense (PubMed:[15908412](http://www.uniprot.org/citations/15908412)), PubMed:[17443469](http://www.uniprot.org/citations/17443469)), PubMed:[23776208](http://www.uniprot.org/citations/23776208)). Counteracts the anti-inflammatory activity of glucocorticoids (PubMed:[15908412](http://www.uniprot.org/citations/15908412)), PubMed:[17443469](http://www.uniprot.org/citations/17443469)), PubMed:[23776208](http://www.uniprot.org/citations/23776208)). Has phenylpyruvate tautomerase and dopachrome tautomerase activity (in vitro), but the physiological substrate is not known (PubMed:[11439086](http://www.uniprot.org/citations/11439086)), PubMed:[17526494](http://www.uniprot.org/citations/17526494)). It is not clear whether the tautomerase activity has any physiological relevance, and whether it is important for cytokine activity (PubMed:[11439086](http://www.uniprot.org/citations/11439086)), PubMed:[17526494](http://www.uniprot.org/citations/17526494)).

### Cellular Location

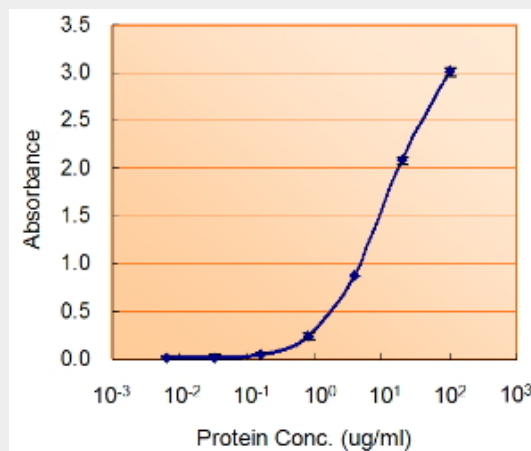
Secreted. Cytoplasm. Note=Does not have a cleavable signal sequence and is secreted via a specialized, non-classical pathway Secreted by macrophages upon stimulation by bacterial lipopolysaccharide (LPS), or by M.tuberculosis antigens

### Goat Anti-MIF Antibody - Protocols

Provided below are standard protocols that you may find useful for product applications.

- [Western Blot](#)
- [Blocking Peptides](#)
- [Dot Blot](#)
- [Immunohistochemistry](#)
- [Immunofluorescence](#)
- [Immunoprecipitation](#)
- [Flow Cytometry](#)
- [Cell Culture](#)

### Goat Anti-MIF Antibody - Images



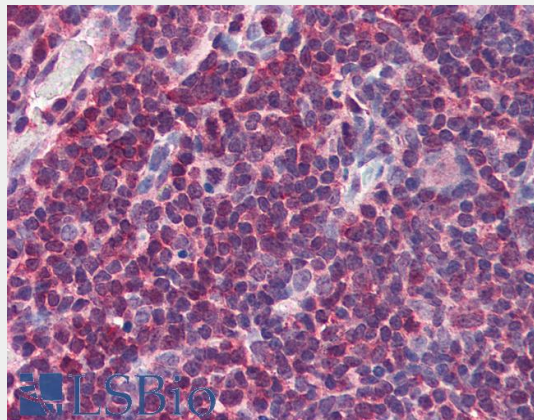
AF1672a (1.5ug/ml) as the reporter with EB002005 as the capture rabbit antibody (5ug/ml).



AF1672a (0.01 µg/ml) staining of Human Thymus lysate (35 µg protein in RIPA buffer). Detected by chemiluminescence.



AF1672a (0.01 µg/ml) staining of Daudi (A) and Jurkat (B) lysate (35 µg protein in RIPA buffer). Detected by chemiluminescence.



AF1672a (5 µg/ml) staining of paraffin embedded Human Thymus. Steamed antigen retrieval with citrate buffer pH 6, AP-staining.

## **Goat Anti-MIF Antibody - Background**

This gene encodes a lymphokine involved in cell-mediated immunity, immunoregulation, and inflammation. It plays a role in the regulation of macrophage function in host defense through the suppression of anti-inflammatory effects of glucocorticoids. This lymphokine and the JAB1 protein form a complex in the cytosol near the peripheral plasma membrane, which may indicate an additional role in integrin signaling pathways.

## **Goat Anti-MIF Antibody - References**

A genetic association study of maternal and fetal candidate genes that predispose to preterm prelabor rupture of membranes (PROM). Romero R, et al. *Am J Obstet Gynecol*, 2010 Jul 29. PMID 20673868.

Variation at the NFATC2 Locus Increases the Risk of Thiazolinedione-Induced Edema in the Diabetes REduction Assessment with ramipril and rosiglitazone Medication (DREAM) Study. Bailey SD, et al. *Diabetes Care*, 2010 Jul 13. PMID 20628086.

Association between functional promoter polymorphisms of macrophage migration inhibitory factor (MIF) gene and ulcerative colitis in Japan. Shiroeda H, et al. *Cytokine*, 2010 Aug. PMID 20621719.

Polymorphisms of the macrophage migration inhibitory factor gene in a UK population with Type 1 diabetes mellitus. Martin RJ, et al. *Diabet Med*, 2010 Feb. PMID 20546256.

Allosteric inhibition of macrophage migration inhibitory factor revealed by ibudilast. Cho Y, et al. *Proc Natl Acad Sci U S A*, 2010 Jun 22. PMID 20534506.