

**Goat Anti-MCL1 Antibody**  
Peptide-affinity purified goat antibody  
Catalog # AF1659a

## Specification

---

### Goat Anti-MCL1 Antibody - Product Information

Application	WB
Primary Accession	<a href="#">Q07820</a>
Other Accession	<a href="#">NP_068779</a> , <a href="#">4170</a> , <a href="#">17210 (mouse)</a>
Reactivity	Human, Mouse, Rat
Predicted	Pig, Dog
Host	Goat
Clonality	Polyclonal
Concentration	0.5mg/ml
Isotype	IgG
Calculated MW	37337

### Goat Anti-MCL1 Antibody - Additional Information

**Gene ID** 4170

#### Other Names

Induced myeloid leukemia cell differentiation protein Mcl-1, Bcl-2-like protein 3, Bcl2-L-3, Bcl-2-related protein EAT/mcl1, mcl1/EAT, MCL1, BCL2L3

#### Format

0.5 mg IgG/ml in Tris saline (20mM Tris pH7.3, 150mM NaCl), 0.02% sodium azide, with 0.5% bovine serum albumin

#### Storage

Maintain refrigerated at 2-8°C for up to 6 months. For long term storage store at -20°C in small aliquots to prevent freeze-thaw cycles.

#### Precautions

Goat Anti-MCL1 Antibody is for research use only and not for use in diagnostic or therapeutic procedures.

### Goat Anti-MCL1 Antibody - Protein Information

**Name** MCL1

**Synonyms** BCL2L3

#### Function

Involved in the regulation of apoptosis versus cell survival, and in the maintenance of viability but not of proliferation. Mediates its effects by interactions with a number of other regulators of apoptosis. Isoform 1 inhibits apoptosis. Isoform 2 promotes apoptosis.

### Cellular Location

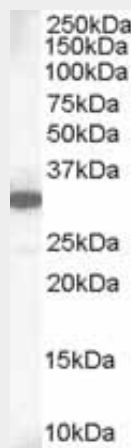
Membrane; Single-pass membrane protein. Cytoplasm. Mitochondrion. Nucleus, nucleoplasm  
Note=Cytoplasmic, associated with mitochondria

### Goat Anti-MCL1 Antibody - Protocols

Provided below are standard protocols that you may find useful for product applications.

- [Western Blot](#)
- [Blocking Peptides](#)
- [Dot Blot](#)
- [Immunohistochemistry](#)
- [Immunofluorescence](#)
- [Immunoprecipitation](#)
- [Flow Cytometry](#)
- [Cell Culture](#)

### Goat Anti-MCL1 Antibody - Images



AF1659a staining (1 µg/ml) of Human Lung lysate (RIPA buffer, 35 µg total protein per lane). Primary incubated for 1 hour. Detected by chemiluminescence.

### Goat Anti-MCL1 Antibody - Background

The protein encoded by this gene belongs to the Bcl-2 family. Alternative splicing occurs at this locus and two transcript variants encoding distinct isoforms have been identified. The longer gene product (isoform 1) enhances cell survival by inhibiting apoptosis while the alternatively spliced shorter gene product (isoform 2) promotes apoptosis and is death-inducing.

### Goat Anti-MCL1 Antibody - References

An approach based on a genome-wide association study reveals candidate loci for narcolepsy. Shimada M, et al. Hum Genet, 2010 Oct. PMID 20677014.  
Variation at the NFATC2 Locus Increases the Risk of Thiazolinedione-Induced Edema in the Diabetes REduction Assessment with ramipril and rosiglitazone Medication (DREAM) Study. Bailey SD, et al. Diabetes Care, 2010 Jul 13. PMID 20628086.  
Phosphorylation of Mcl-1 by CDK1-cyclin B1 initiates its Cdc20-dependent destruction during mitotic arrest. Harley ME, et al. EMBO J, 2010 Jul 21. PMID 20526282.  
Mechanism by which Mcl-1 regulates cancer-specific apoptosis triggered by mda-7/IL-24, an IL-10-related cytokine. Dash R, et al. Cancer Res, 2010 Jun 15. PMID 20501829.

Apoptotic regulation by MCL-1 through heterodimerization. Liu Q, et al. J Biol Chem, 2010 Jun 18.  
PMID 20392693.