

Goat Anti-MARCH10 Antibody
Peptide-affinity purified goat antibody
Catalog # AF1651a

Specification

Goat Anti-MARCH10 Antibody - Product Information

Application	WB
Primary Accession	Q8NA82
Other Accession	NP_689811 , 162333 , 303596 (rat)
Reactivity	Rat
Predicted	Human
Host	Goat
Clonality	Polyclonal
Concentration	100ug/200ul
Isotype	IgG
Calculated MW	90511

Goat Anti-MARCH10 Antibody - Additional Information

Gene ID 162333

Other Names

Probable E3 ubiquitin-protein ligase MARCH10, 6.3.2.-, Membrane-associated RING finger protein 10, Membrane-associated RING-CH protein X, MARCH-X, RING finger protein 190, MARCH10, RNF190

Format

0.5 mg IgG/ml in Tris saline (20mM Tris pH7.3, 150mM NaCl), 0.02% sodium azide, with 0.5% bovine serum albumin

Storage

Maintain refrigerated at 2-8°C for up to 6 months. For long term storage store at -20°C in small aliquots to prevent freeze-thaw cycles.

Precautions

Goat Anti-MARCH10 Antibody is for research use only and not for use in diagnostic or therapeutic procedures.

Goat Anti-MARCH10 Antibody - Protein Information

Name MARCHF10 ([HGNC:26655](#))

Synonyms MARCH10, RNF190

Function

E3 ubiquitin-protein ligase (Probable). E3 ubiquitin ligases accept ubiquitin from an E2 ubiquitin-conjugating enzyme in the form of a thioester and then directly transfer the ubiquitin to

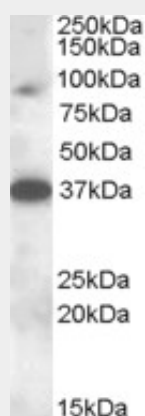
targeted substrates.

Goat Anti-MARCH10 Antibody - Protocols

Provided below are standard protocols that you may find useful for product applications.

- [Western Blot](#)
- [Blocking Peptides](#)
- [Dot Blot](#)
- [Immunohistochemistry](#)
- [Immunofluorescence](#)
- [Immunoprecipitation](#)
- [Flow Cytometry](#)
- [Cell Culture](#)

Goat Anti-MARCH10 Antibody - Images



AF1651a (0.3 µg/ml) staining of Rat Testis lysate (35 µg protein in RIPA buffer). Primary incubation was 1 hour. Detected by chemiluminescence.

Goat Anti-MARCH10 Antibody - Background

MARCH10 is a member of the MARCH family of membrane-bound E3 ubiquitin ligases (EC 6.3.2.19). MARCH enzymes add ubiquitin (see MIM 191339) to target lysines in substrate proteins, thereby signaling their vesicular transport between membrane compartments (Morokuma et al., 2007 [PubMed 17604280]).

Goat Anti-MARCH10 Antibody - References

Association of genetic variants with hemorrhagic stroke in Japanese individuals. Yoshida T, et al. *Int J Mol Med*, 2010 Apr. PMID 20198315.
Assessment of a polymorphism of SDK1 with hypertension in Japanese Individuals. Oguri M, et al. *Am J Hypertens*, 2010 Jan. PMID 19851296.
Association of gene polymorphisms with chronic kidney disease in Japanese individuals. Yoshida T, et al. *Int J Mol Med*, 2009 Oct. PMID 19724895.
MARCH-XI, a novel transmembrane ubiquitin ligase implicated in ubiquitin-dependent protein sorting in developing spermatids. Morokuma Y, et al. *J Biol Chem*, 2007 Aug 24. PMID 17604280.
The status, quality, and expansion of the NIH full-length cDNA project: the Mammalian Gene Collection (MGC). Gerhard DS, et al. *Genome Res*, 2004 Oct. PMID 15489334.