

Goat Anti-LDHC (aa 221 - 233) Antibody
Peptide-affinity purified goat antibody
Catalog # AF1618b

Specification

Goat Anti-LDHC (aa 221 - 233) Antibody - Product Information

Application	WB, IHC
Primary Accession	P07864
Other Accession	NP_059144 , 3948 , 16833 (mouse)
Reactivity	Mouse
Predicted	Human
Host	Goat
Clonality	Polyclonal
Concentration	0.5mg/ml
Isotype	IgG
Calculated MW	36311

Goat Anti-LDHC (aa 221 - 233) Antibody - Additional Information

Gene ID 3948

Other Names

L-lactate dehydrogenase C chain, LDH-C, 1.1.1.27, Cancer/testis antigen 32, CT32, LDH testis subunit, LDH-X, LDHC, LDH3, LDHX

Format

0.5 mg IgG/ml in Tris saline (20mM Tris pH7.3, 150mM NaCl), 0.02% sodium azide, with 0.5% bovine serum albumin

Storage

Maintain refrigerated at 2-8°C for up to 6 months. For long term storage store at -20°C in small aliquots to prevent freeze-thaw cycles.

Precautions

Goat Anti-LDHC (aa 221 - 233) Antibody is for research use only and not for use in diagnostic or therapeutic procedures.

Goat Anti-LDHC (aa 221 - 233) Antibody - Protein Information

Name LDHC

Synonyms LDH3, LDHX

Function

Possible role in sperm motility.

Cellular Location

Cytoplasm.

Goat Anti-LDHC (aa 221 - 233) Antibody - Protocols

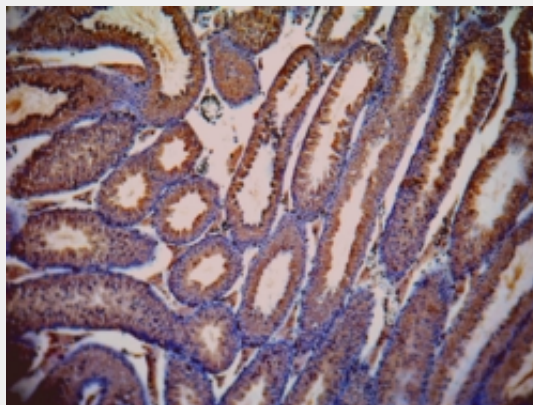
Provided below are standard protocols that you may find useful for product applications.

- [Western Blot](#)
- [Blocking Peptides](#)
- [Dot Blot](#)
- [Immunohistochemistry](#)
- [Immunofluorescence](#)
- [Immunoprecipitation](#)
- [Flow Cytometry](#)
- [Cell Culture](#)

Goat Anti-LDHC (aa 221 - 233) Antibody - Images



AF1618b (0.03 $\mu\text{g/ml}$) staining of Mouse Testis lysate (35 μg protein in RIPA buffer). Primary incubation was 1 hour. Detected by chemiluminescence.



AF1618b (1 $\mu\text{g/ml}$) staining of paraffin embedded Mouse Testis. Data kindly provided by Dr. Erwin Goldberg, Northwestern University, Evanston, IL USA.

Goat Anti-LDHC (aa 221 - 233) Antibody - Background

Lactate dehydrogenase C catalyzes the conversion of L-lactate and NAD to pyruvate and NADH in the final step of anaerobic glycolysis. LDHC is testis-specific and belongs to the lactate dehydrogenase family. Two transcript variants have been detected which differ in the 5' untranslated region.

Goat Anti-LDHC (aa 221 - 233) Antibody - References

Homo sapiens lactate dehydrogenase c (Ldhc) gene expression in cancer cells is regulated by transcription factor Sp1, CREB, and CpG island methylation. Tang H, et al. J Androl, 2009 Mar-Apr. PMID 18930904.

Construction of sperm-specific lactate dehydrogenase DNA vaccine and experimental study of its immunocontraceptive effect on mice. Chen Y, et al. Sci China C Life Sci, 2008 Apr. PMID 18368308.

Elevated level of serum LDH2 and LDH3 in sputum three positive TB patients of Sahariya tribe: a preliminary study. Sharma PR, et al. Clin Biochem, 2007 Dec. PMID 17935709.

Increased serum lactate dehydrogenase isoenzymes in Ph-negative chronic myeloproliferative diseases: a metabolic adaptation? Mazzotta S, et al. Hematology, 2006 Aug. PMID 17178662.

The status, quality, and expansion of the NIH full-length cDNA project: the Mammalian Gene Collection (MGC). Gerhard DS, et al. Genome Res, 2004 Oct. PMID 15489334.