

**Goat Anti-LDHC (aa 217 - 231) Antibody**  
Peptide-affinity purified goat antibody  
Catalog # AF1618a

**Specification**

---

**Goat Anti-LDHC (aa 217 - 231) Antibody - Product Information**

Application	WB, IHC
Primary Accession	<a href="#">P07864</a>
Other Accession	<a href="#">NP_059144</a> , <a href="#">3948</a> , <a href="#">16833 (mouse)</a>
Reactivity	Mouse
Predicted	Human
Host	Goat
Clonality	Polyclonal
Concentration	100ug/200ul
Isotype	IgG
Calculated MW	36311

**Goat Anti-LDHC (aa 217 - 231) Antibody - Additional Information**

**Gene ID** 3948

**Other Names**

L-lactate dehydrogenase C chain, LDH-C, 1.1.1.27, Cancer/testis antigen 32, CT32, LDH testis subunit, LDH-X, LDHC, LDH3, LDHX

**Format**

0.5 mg IgG/ml in Tris saline (20mM Tris pH7.3, 150mM NaCl), 0.02% sodium azide, with 0.5% bovine serum albumin

**Storage**

Maintain refrigerated at 2-8°C for up to 6 months. For long term storage store at -20°C in small aliquots to prevent freeze-thaw cycles.

**Precautions**

Goat Anti-LDHC (aa 217 - 231) Antibody is for research use only and not for use in diagnostic or therapeutic procedures.

**Goat Anti-LDHC (aa 217 - 231) Antibody - Protein Information**

**Name** LDHC

**Synonyms** LDH3, LDHX

**Function**

Possible role in sperm motility.

**Cellular Location**

Cytoplasm.

### Goat Anti-LDHC (aa 217 - 231) Antibody - Protocols

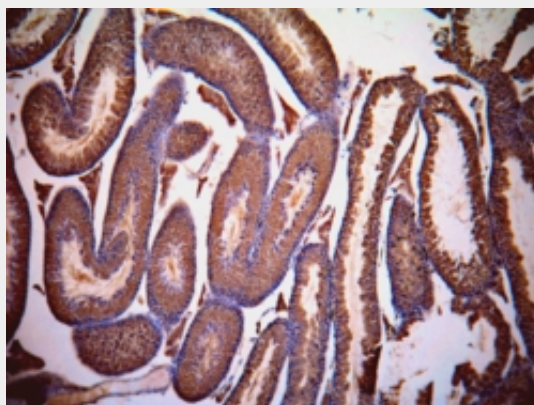
Provided below are standard protocols that you may find useful for product applications.

- [Western Blot](#)
- [Blocking Peptides](#)
- [Dot Blot](#)
- [Immunohistochemistry](#)
- [Immunofluorescence](#)
- [Immunoprecipitation](#)
- [Flow Cytometry](#)
- [Cell Culture](#)

### Goat Anti-LDHC (aa 217 - 231) Antibody - Images



EB07977 (0.03 $\mu$ g/ml) staining of Mouse Testis lysate (35 $\mu$ g protein in RIPA buffer). Primary incubation was 1 hour. Detected by chemiluminescence.



EB07977 (1 $\mu$ g/ml) staining of paraffin embedded Mouse Testis. Data kindly provided by Dr. Erwin Goldberg, Northwestern University, Evanston, IL USA.

### Goat Anti-LDHC (aa 217 - 231) Antibody - Background

Lactate dehydrogenase C catalyzes the conversion of L-lactate and NAD to pyruvate and NADH in the final step of anaerobic glycolysis. LDHC is testis-specific and belongs to the lactate dehydrogenase family. Two transcript variants have been detected which differ in the 5' untranslated region.

### **Goat Anti-LDHC (aa 217 - 231) Antibody - References**

Homo sapiens lactate dehydrogenase c (Ldhc) gene expression in cancer cells is regulated by transcription factor Sp1, CREB, and CpG island methylation. Tang H, et al. J Androl, 2009 Mar-Apr. PMID 18930904.

Construction of sperm-specific lactate dehydrogenase DNA vaccine and experimental study of its immunocontraceptive effect on mice. Chen Y, et al. Sci China C Life Sci, 2008 Apr. PMID 18368308.

Elevated level of serum LDH2 and LDH3 in sputum three positive TB patients of Sahariya tribe: a preliminary study. Sharma PR, et al. Clin Biochem, 2007 Dec. PMID 17935709.

Increased serum lactate dehydrogenase isoenzymes in Ph-negative chronic myeloproliferative diseases: a metabolic adaptation? Mazzotta S, et al. Hematology, 2006 Aug. PMID 17178662.

The status, quality, and expansion of the NIH full-length cDNA project: the Mammalian Gene Collection (MGC). Gerhard DS, et al. Genome Res, 2004 Oct. PMID 15489334.