

**Goat Anti-IGFBP6 Antibody**  
Peptide-affinity purified goat antibody  
Catalog # AF1559a

## Specification

---

### Goat Anti-IGFBP6 Antibody - Product Information

|                   |  |
|-------------------|--|
| Application       | WB   |
| Primary Accession | <a href="#">P24592</a>                           |
| Other Accession   | <a href="#">NP_002169</a> , <a href="#">3489</a> |
| Reactivity        | Human  |
| Host              | Goat   |
| Clonality         | Polyclonal                                       |
| Concentration     | 100ug/200ul                                      |
| Isotype           | IgG  |
| Calculated MW     | 25322  |

### Goat Anti-IGFBP6 Antibody - Additional Information

**Gene ID** 3489

#### Other Names

Insulin-like growth factor-binding protein 6, IBP-6, IGF-binding protein 6, IGFBP-6, IGFBP6, IBP6

#### Format

0.5 mg IgG/ml in Tris saline (20mM Tris pH7.3, 150mM NaCl), 0.02% sodium azide, with 0.5% bovine serum albumin

#### Storage

Maintain refrigerated at 2-8°C for up to 6 months. For long term storage store at -20°C in small aliquots to prevent freeze-thaw cycles.

#### Precautions

Goat Anti-IGFBP6 Antibody is for research use only and not for use in diagnostic or therapeutic procedures.

### Goat Anti-IGFBP6 Antibody - Protein Information

**Name** IGFBP6 ([HGNC:5475](#))

**Synonyms** IBP6

#### Function

IGF-binding proteins prolong the half-life of the IGFs and have been shown to either inhibit or stimulate the growth promoting effects of the IGFs on cell culture. They alter the interaction of IGFs with their cell surface receptors. Activates the MAPK signaling pathway and induces cell migration (PubMed: <http://www.uniprot.org/citations/24003225> target="\_blank">24003225</a>).

**Cellular Location**  
Secreted.

### Goat Anti-IGFBP6 Antibody - Protocols

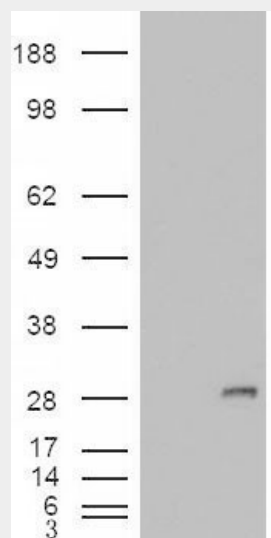
Provided below are standard protocols that you may find useful for product applications.

- [Western Blot](#)
- [Blocking Peptides](#)
- [Dot Blot](#)
- [Immunohistochemistry](#)
- [Immunofluorescence](#)
- [Immunoprecipitation](#)
- [Flow Cytometry](#)
- [Cell Culture](#)

### Goat Anti-IGFBP6 Antibody - Images



AF1559a (0.5 µg/ml) staining of Human Adrenal Gland lysate (35 µg protein in RIPA buffer). Primary incubation was 1 hour. Detected by chemiluminescence.



HEK293 overexpressing IGFBP6 (RC204060) and probed with AF1559a (mock transfection in first lane), tested by Origene.

### Goat Anti-IGFBP6 Antibody - References

Comprehensive analysis of common genetic variation in 61 genes related to steroid hormone and insulin-like growth factor-I metabolism and breast cancer risk in the NCI breast and prostate cancer cohort consortium. Canzian F, et al. Hum Mol Genet, 2010 Oct 1. PMID 20634197.

Variation at the NFATC2 Locus Increases the Risk of Thiazolinedione-Induced Edema in the Diabetes REduction Assessment with ramipril and rosiglitazone Medication (DREAM) Study. Bailey SD, et al. Diabetes Care, 2010 Jul 13. PMID 20628086.

Cross-talk between MAP kinase pathways is involved in IGF-independent, IGFBP-6-induced Rh30 rhabdomyosarcoma cell migration. Fu P, et al. J Cell Physiol, 2010 Sep. PMID 20432455.

Single nucleotide polymorphisms in miRNA binding sites and miRNA genes as breast/ovarian cancer risk modifiers in Jewish high-risk women. Kontorovich T, et al. Int J Cancer, 2010 Aug 1. PMID 19950226.

Gene-centric association signals for lipids and apolipoproteins identified via the HumanCVD BeadChip. Talmud PJ, et al. Am J Hum Genet, 2009 Nov. PMID 19913121.