

**Goat Anti-GRAP2 / GRID / Grf40 Antibody**  
Peptide-affinity purified goat antibody  
Catalog # AF1506a

**Specification**

---

**Goat Anti-GRAP2 / GRID / Grf40 Antibody - Product Information**

Application	WB
Primary Accession	<a href="#">O75791</a>
Other Accession	<a href="#">NP_004801</a> , <a href="#">9402</a> , <a href="#">17444 (mouse)</a>
Reactivity	Human
Predicted	Mouse, Rat, Pig, Dog
Host	Goat
Clonality	Polyclonal
Concentration	100ug/200ul
Isotype	IgG
Calculated MW	37909

**Goat Anti-GRAP2 / GRID / Grf40 Antibody - Additional Information**

**Gene ID** 9402

**Other Names**

GRB2-related adapter protein 2, Adapter protein GRID, GRB-2-like protein, GRB2L, GRBLG, GRBX, Grf40 adapter protein, Grf-40, Growth factor receptor-binding protein, Hematopoietic cell-associated adapter protein GrpL, P38, Protein GADS, SH3-SH2-SH3 adapter Mona, GRAP2, GADS, GRB2L, GRID

**Format**

0.5 mg IgG/ml in Tris saline (20mM Tris pH7.3, 150mM NaCl), 0.02% sodium azide, with 0.5% bovine serum albumin

**Storage**

Maintain refrigerated at 2-8°C for up to 6 months. For long term storage store at -20°C in small aliquots to prevent freeze-thaw cycles.

**Precautions**

Goat Anti-GRAP2 / GRID / Grf40 Antibody is for research use only and not for use in diagnostic or therapeutic procedures.

**Goat Anti-GRAP2 / GRID / Grf40 Antibody - Protein Information**

**Name** GRAP2

**Synonyms** GADS, GRB2L, GRID

**Function**

Interacts with SLP-76 to regulate NF-AT activation. Binds to tyrosine-phosphorylated shc.

### Cellular Location

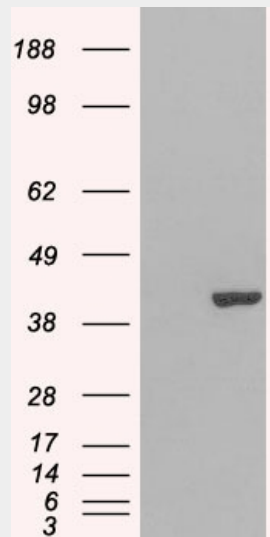
Nucleus. Cytoplasm. Endosome

### Goat Anti-GRAP2 / GRID / Grf40 Antibody - Protocols

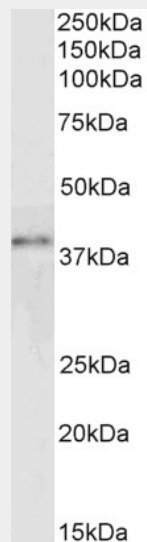
Provided below are standard protocols that you may find useful for product applications.

- [Western Blot](#)
- [Blocking Peptides](#)
- [Dot Blot](#)
- [Immunohistochemistry](#)
- [Immunofluorescence](#)
- [Immunoprecipitation](#)
- [Flow Cytometry](#)
- [Cell Culture](#)

### Goat Anti-GRAP2 / GRID / Grf40 Antibody - Images



HEK293 overexpressing GRAP2 (RC206546) and probed with AF1506a (mock transfection in first lane), tested by Origene.



Antibody (0.3µg/ml) staining of Jurkat lysate (30µg protein in RIPA buffer). Primary incubation was 1 hour. Detected by chemiluminescence.

### **Goat Anti-GRAP2 / GRID / Grf40 Antibody - Background**

This gene encodes a member of the GRB2/Sem5/Drk family. This member is an adaptor-like protein involved in leukocyte-specific protein-tyrosine kinase signaling. Like its related family member, GRB2-related adaptor protein (GRAP), this protein contains an SH2 domain flanked by two SH3 domains. This protein interacts with other proteins, such as GRB2-associated binding protein 1 (GAB1) and the SLP-76 leukocyte protein (LCP2), through its SH3 domains. Transcript variants utilizing alternative polyA sites exist.

### **Goat Anti-GRAP2 / GRID / Grf40 Antibody - References**

Personalized smoking cessation: interactions between nicotine dose, dependence and quit-success genotype score. Rose JE, et al. Mol Med, 2010 Jul-Aug. PMID 20379614.

New genetic associations detected in a host response study to hepatitis B vaccine. Davila S, et al. Genes Immun, 2010 Apr. PMID 20237496.

The Bcr-Abl kinase regulates the actin cytoskeleton via a GADS/Slp-76/Nck1 adaptor protein pathway. Preisinger C, et al. Cell Signal, 2010 May. PMID 20079431.

Secreted protein acidic and rich in cysteine (SPARC) gene polymorphism association with hepatocellular carcinoma in Italian patients. Segat L, et al. J Gastroenterol Hepatol, 2009 Dec. PMID 19817957.

Expression of the Grb2-related RET adapter protein Grap-2 in human medullary thyroid carcinoma. Ludwig L, et al. Cancer Lett, 2009 Mar 18. PMID 19027225.