

**Goat Anti-GPX7 Antibody**  
Peptide-affinity purified goat antibody  
Catalog # AF1502a

## Specification

---

### Goat Anti-GPX7 Antibody - Product Information

Application	EIA, WB
Primary Accession	<a href="#">O96SL4</a>
Other Accession	<a href="#">NP_056511.2</a> , <a href="#">2882</a> , <a href="#">67305 (mouse)</a> , <a href="#">298376 (rat)</a>
Reactivity	Human
Host	Goat
Clonality	Polyclonal
Concentration	100ug/200ul
Isotype	IgG
Calculated MW	20996

### Goat Anti-GPX7 Antibody - Additional Information

**Gene ID** 2882

#### Other Names

Glutathione peroxidase 7, GPx-7, GSHPx-7, 1.11.1.9, CL683, GPX7, GPX6

#### Format

0.5 mg IgG/ml in Tris saline (20mM Tris pH7.3, 150mM NaCl), 0.02% sodium azide, with 0.5% bovine serum albumin

#### Storage

Maintain refrigerated at 2-8°C for up to 6 months. For long term storage store at -20°C in small aliquots to prevent freeze-thaw cycles.

#### Precautions

Goat Anti-GPX7 Antibody is for research use only and not for use in diagnostic or therapeutic procedures.

### Goat Anti-GPX7 Antibody - Protein Information

**Name** GPX7

**Synonyms** GPX6

#### Function

It protects esophageal epithelia from hydrogen peroxide- induced oxidative stress. It suppresses acidic bile acid-induced reactive oxygen species (ROS) and protects against oxidative DNA damage and double-strand breaks.

**Cellular Location**  
Secreted.

**Tissue Location**

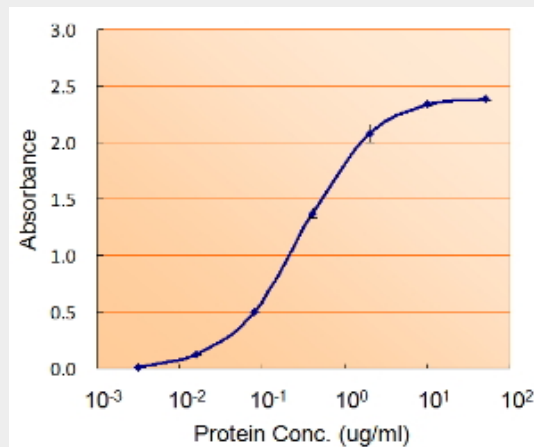
Expressed in esophageal epithelial cells; expression is up-regulated after exposure to acidic bile acids

**Goat Anti-GPX7 Antibody - Protocols**

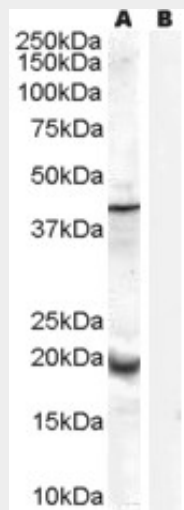
Provided below are standard protocols that you may find useful for product applications.

- [Western Blot](#)
- [Blocking Peptides](#)
- [Dot Blot](#)
- [Immunohistochemistry](#)
- [Immunofluorescence](#)
- [Immunoprecipitation](#)
- [Flow Cytometry](#)
- [Cell Culture](#)

**Goat Anti-GPX7 Antibody - Images**



EB7319 (5ug/ml) as the reporter with EB002012 as the capture rabbit antibody (5ug/ml).



AF1502a (0.3µg/ml) staining of Human Prostate lysate (35µg protein in RIPA buffer) with (B) and without (A) blocking with the immunising peptide. Primary incubation was 1 hour. Detected by chemiluminescence.

#### **Goat Anti-GPX7 Antibody - References**

Variation at the NFATC2 Locus Increases the Risk of Thiazolinedione-Induced Edema in the Diabetes REduction Assessment with ramipril and rosiglitazone Medication (DREAM) Study. Bailey SD, et al. Diabetes Care, 2010 Jul 13. PMID 20628086.

Glutathione pathway genetic polymorphisms and lung cancer survival after platinum-based chemotherapy. Moyer AM, et al. Cancer Epidemiol Biomarkers Prev, 2010 Mar. PMID 20200426.

Gene-centric association signals for lipids and apolipoproteins identified via the HumanCVD BeadChip. Talmud PJ, et al. Am J Hum Genet, 2009 Nov. PMID 19913121.

A protein-protein interaction network for human inherited ataxias and disorders of Purkinje cell degeneration. Lim J, et al. Cell, 2006 May 19. PMID 16713569.

The DNA sequence and biological annotation of human chromosome 1. Gregory SG, et al. Nature, 2006 May 18. PMID 16710414.