

**Goat Anti-GAB2 Antibody**  
Peptide-affinity purified goat antibody  
Catalog # AF1454a

## Specification

---

### Goat Anti-GAB2 Antibody - Product Information

Application	WB
Primary Accession	<a href="#">O9UQC2</a>
Other Accession	<a href="#">NP_036428</a> , <a href="#">9846</a> , <a href="#">14389 (mouse)</a> , <a href="#">84477 (rat)</a>
Reactivity	Human
Predicted	Mouse, Rat, Dog
Host	Goat
Clonality	Polyclonal
Concentration	100ug/200ul
Isotype	IgG
Calculated MW	74458

### Goat Anti-GAB2 Antibody - Additional Information

**Gene ID** 9846

#### Other Names

GRB2-associated-binding protein 2, GRB2-associated binder 2, Growth factor receptor bound protein 2-associated protein 2, pp100, GAB2, KIAA0571

#### Format

0.5 mg IgG/ml in Tris saline (20mM Tris pH7.3, 150mM NaCl), 0.02% sodium azide, with 0.5% bovine serum albumin

#### Storage

Maintain refrigerated at 2-8°C for up to 6 months. For long term storage store at -20°C in small aliquots to prevent freeze-thaw cycles.

#### Precautions

Goat Anti-GAB2 Antibody is for research use only and not for use in diagnostic or therapeutic procedures.

### Goat Anti-GAB2 Antibody - Protein Information

**Name** GAB2

**Synonyms** KIAA0571

#### Function

Adapter protein which acts downstream of several membrane receptors including cytokine, antigen, hormone, cell matrix and growth factor receptors to regulate multiple signaling pathways. Regulates osteoclast differentiation mediating the TNFRSF11A/RANK signaling. In allergic

response, it plays a role in mast cells activation and degranulation through PI-3-kinase regulation. Also involved in the regulation of cell proliferation and hematopoiesis.

#### Cellular Location

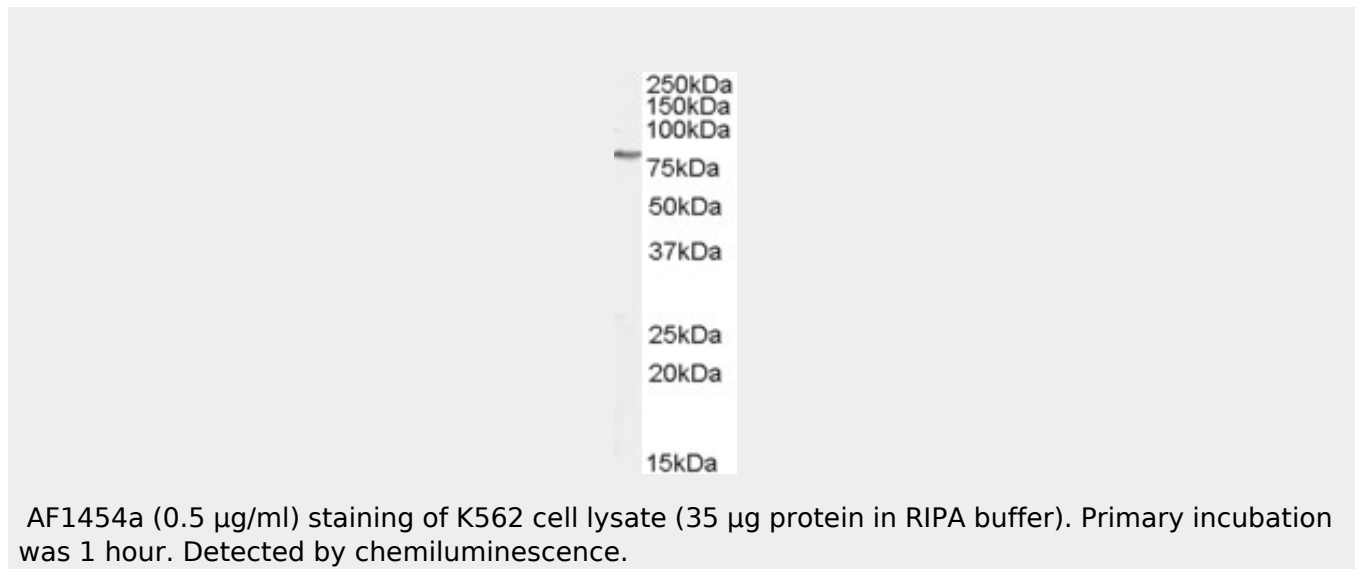
Cytoplasm. Cell membrane. Membrane raft {ECO:0000250|UniProtKB:Q9Z1S8}

### Goat Anti-GAB2 Antibody - Protocols

Provided below are standard protocols that you may find useful for product applications.

- [Western Blot](#)
- [Blocking Peptides](#)
- [Dot Blot](#)
- [Immunohistochemistry](#)
- [Immunofluorescence](#)
- [Immunoprecipitation](#)
- [Flow Cytometry](#)
- [Cell Culture](#)

### Goat Anti-GAB2 Antibody - Images



### Goat Anti-GAB2 Antibody - Background

This gene is a member of the GRB2-associated binding protein (GAB) gene family. These proteins contain pleckstrin homology (PH) domain, and bind SHP2 tyrosine phosphatase and GRB2 adapter protein. They act as adapters for transmitting various signals in response to stimuli through cytokine and growth factor receptors, and T- and B-cell antigen receptors. The protein encoded by this gene is the principal activator of phosphatidylinositol-3 kinase in response to activation of the high affinity IgE receptor. Two alternatively spliced transcripts encoding different isoforms have been described for this gene.

### Goat Anti-GAB2 Antibody - References

Validating predicted biological effects of Alzheimer's disease associated SNPs using CSF biomarker levels. Kauwe JS, et al. J Alzheimers Dis, 2010. PMID 20634593.  
Variation at the NFATC2 Locus Increases the Risk of Thiazolinedione-Induced Edema in the Diabetes REduction Assessment with ramipril and rosiglitazone Medication (DREAM) Study. Bailey SD, et al. Diabetes Care, 2010 Jul 13. PMID 20628086.

Intermediate phenotypes identify divergent pathways to Alzheimer's disease. Shulman JM, et al. PLoS One, 2010 Jun 21. PMID 20574532.

Association of CR1, CLU and PICALM with Alzheimer's disease in a cohort of clinically characterized and neuropathologically verified individuals. Corneveaux JJ, et al. Hum Mol Genet, 2010 Aug 15. PMID 20534741.

Systematic analysis of candidate genes for Alzheimer's disease in a French, genome-wide association study. Laumet G, et al. J Alzheimers Dis, 2010. PMID 20413850.