

Goat Anti-Flotillin 1 Antibody
Peptide-affinity purified goat antibody
Catalog # AF1421a

Specification

Goat Anti-Flotillin 1 Antibody - Product Information

Application	WB, IHC
Primary Accession	O75955
Other Accession	NP_005794 , 10211 , 14251 (mouse)
Reactivity	Human
Predicted	Pig, Dog
Host	Goat
Clonality	Polyclonal
Concentration	100ug/200ul
Isotype	IgG
Calculated MW	47355

Goat Anti-Flotillin 1 Antibody - Additional Information

Gene ID 10211

Other Names
Flotillin-1, FLOT1

Format
0.5 mg IgG/ml in Tris saline (20mM Tris pH7.3, 150mM NaCl), 0.02% sodium azide, with 0.5% bovine serum albumin

Storage
Maintain refrigerated at 2-8°C for up to 6 months. For long term storage store at -20°C in small aliquots to prevent freeze-thaw cycles.

Precautions
Goat Anti-Flotillin 1 Antibody is for research use only and not for use in diagnostic or therapeutic procedures.

Goat Anti-Flotillin 1 Antibody - Protein Information

Name FLOT1

Function
May act as a scaffolding protein within caveolar membranes, functionally participating in formation of caveolae or caveolae-like vesicles.

Cellular Location
Cell membrane; Peripheral membrane protein. Endosome Membrane, caveola {ECO:0000250|UniProtKB:O08917}; Peripheral membrane protein

{ECO:0000250|UniProtKB:O08917}. Melanosome. Membrane raft. Note=Identified by mass spectrometry in melanosome fractions from stage I to stage IV (PubMed:17081065)
Membrane-associated protein of caveola (By similarity) {ECO:0000250|UniProtKB:O08917, ECO:0000269|PubMed:17081065}

Goat Anti-Flotillin 1 Antibody - Protocols

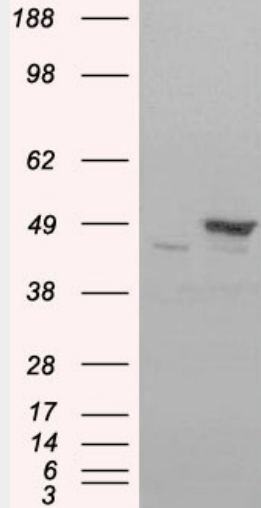
Provided below are standard protocols that you may find useful for product applications.

- [Western Blot](#)
- [Blocking Peptides](#)
- [Dot Blot](#)
- [Immunohistochemistry](#)
- [Immunofluorescence](#)
- [Immunoprecipitation](#)
- [Flow Cytometry](#)
- [Cell Culture](#)

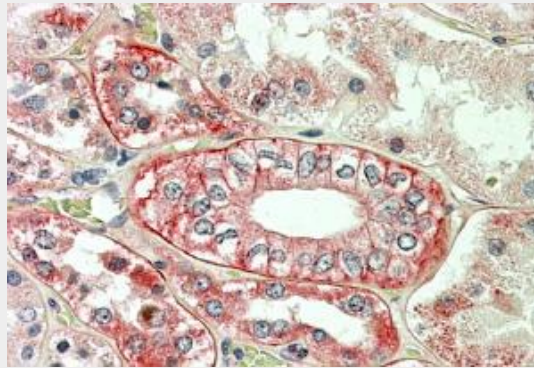
Goat Anti-Flotillin 1 Antibody - Images



AF1421a staining (0.3 $\mu\text{g}/\text{ml}$) of H460 lysate (RIPA buffer, 35 μg total protein per lane). Primary incubated for 1 hour. Detected by western blot using chemiluminescence.



HEK293 overexpressing FLOT1(RC200231) and probed with AF1421a (mock transfection in first lane), tested by Origene.



AF1421a (3.8 $\mu\text{g/ml}$) staining of paraffin embedded Human Kidney. Steamed antigen retrieval with citrate buffer pH 6, AP-staining.

Goat Anti-Flotillin 1 Antibody - Background

Caveolae are small domains on the inner cell membrane involved in vesicular trafficking and signal transduction. FLOT1 encodes a caveolae-associated, integral membrane protein. The function of flotillin 1 has not been determined.

Goat Anti-Flotillin 1 Antibody - References

- Flotillins are involved in the polarization of primitive and mature hematopoietic cells. Rajendran L, et al. PLoS One, 2009 Dec 22. PMID 20027317.
- High-density SNP screening of the major histocompatibility complex in systemic lupus erythematosus demonstrates strong evidence for independent susceptibility regions. Barcellos LF, et al. PLoS Genet, 2009 Oct. PMID 19851445.
- The Mycobacterium bovis bacille Calmette-Guerin phagosome proteome. Lee BY, et al. Mol Cell Proteomics, 2010 Jan. PMID 19815536.
- Flotillins interact with PSGL-1 in neutrophils and, upon stimulation, rapidly organize into membrane domains subsequently accumulating in the uropod. Rossy J, et al. PLoS One, 2009. PMID 19404397.
- Protein delivery with transportans is mediated by caveolae rather than flotillin-dependent pathways. S█████lik P, et al. Bioconjug Chem, 2009 May 20. PMID 19348413.