

Goat Anti-FHL3 / SLIM2 Antibody
Peptide-affinity purified goat antibody
Catalog # AF1416a

Specification

Goat Anti-FHL3 / SLIM2 Antibody - Product Information

Application	WB
Primary Accession	Q13643
Other Accession	NP_004459 , 2275 , 56726 (mouse) , 302363 (rat)
Reactivity	Human, Mouse, Rat
Predicted	Pig
Host	Goat
Clonality	Polyclonal
Concentration	100ug/200ul
Isotype	IgG
Calculated MW	31192

Goat Anti-FHL3 / SLIM2 Antibody - Additional Information

Gene ID 2275

Other Names

Four and a half LIM domains protein 3, FHL-3, Skeletal muscle LIM-protein 2, SLIM-2, FHL3, SLIM2

Format

0.5 mg IgG/ml in Tris saline (20mM Tris pH7.3, 150mM NaCl), 0.02% sodium azide, with 0.5% bovine serum albumin

Storage

Maintain refrigerated at 2-8°C for up to 6 months. For long term storage store at -20°C in small aliquots to prevent freeze-thaw cycles.

Precautions

Goat Anti-FHL3 / SLIM2 Antibody is for research use only and not for use in diagnostic or therapeutic procedures.

Goat Anti-FHL3 / SLIM2 Antibody - Protein Information

Name FHL3

Synonyms SLIM2

Function

Recruited by SOX15 to FOXK1 promoters where it acts as a transcriptional coactivator of FOXK1.

Cellular Location

Nucleus {ECO:0000250|UniProtKB:Q9R059}. Cytoplasm {ECO:0000250|UniProtKB:Q9R059}

Tissue Location

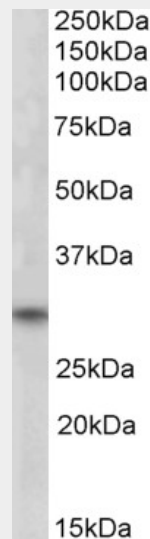
Expressed only in skeletal muscle.

Goat Anti-FHL3 / SLIM2 Antibody - Protocols

Provided below are standard protocols that you may find useful for product applications.

- [Western Blot](#)
- [Blocking Peptides](#)
- [Dot Blot](#)
- [Immunohistochemistry](#)
- [Immunofluorescence](#)
- [Immunoprecipitation](#)
- [Flow Cytometry](#)
- [Cell Culture](#)

Goat Anti-FHL3 / SLIM2 Antibody - Images



AF1416a (1 µg/ml) staining of Human Skeletal Muscle lysate (35 µg protein in RIPA buffer). Primary incubation was 1 hour. Detected by chemiluminescence.

Goat Anti-FHL3 / SLIM2 Antibody - Background

LIM proteins are defined by the possession of a highly conserved double zinc finger motif called the LIM domain.

Goat Anti-FHL3 / SLIM2 Antibody - References

- Identification of the transactivation domain of the human FHL3. Huang X, et al. Mol Biol (Mosk), 2010 Mar-Apr. PMID 20586194.
- Human four-and-a-half LIM family members suppress tumor cell growth through a TGF-beta-like signaling pathway. Ding L, et al. J Clin Invest, 2009 Feb. PMID 19139564.
- FHL3 binds MyoD and negatively regulates myotube formation. Cottle DL, et al. J Cell Sci, 2007 Apr 15. PMID 17389685.
- Towards a proteome-scale map of the human protein-protein interaction network. Rual JF, et al. Nature, 2005 Oct 20. PMID 16189514.
- The SRF target gene Fhl2 antagonizes RhoA/MAL-dependent activation of SRF. Philippar U, et al. Mol

Cell, 2004 Dec 22. PMID 15610731.