

**Goat Anti-Engrailed-2 Antibody**  
Peptide-affinity purified goat antibody  
Catalog # AF1369a

## Specification

---

### Goat Anti-Engrailed-2 Antibody - Product Information

Application	WB
Primary Accession	<a href="#">P19622</a>
Other Accession	<a href="#">NP_001418</a> , <a href="#">2020</a>
Reactivity	Rat
Predicted	Human, Mouse, Dog
Host	Goat
Clonality	Polyclonal
Concentration	100ug/200ul
Isotype	IgG
Calculated MW	34211

### Goat Anti-Engrailed-2 Antibody - Additional Information

**Gene ID** 2020

#### Other Names

Homeobox protein engrailed-2, Homeobox protein en-2, Hu-En-2, EN2

#### Format

0.5 mg IgG/ml in Tris saline (20mM Tris pH7.3, 150mM NaCl), 0.02% sodium azide, with 0.5% bovine serum albumin

#### Storage

Maintain refrigerated at 2-8°C for up to 6 months. For long term storage store at -20°C in small aliquots to prevent freeze-thaw cycles.

#### Precautions

Goat Anti-Engrailed-2 Antibody is for research use only and not for use in diagnostic or therapeutic procedures.

### Goat Anti-Engrailed-2 Antibody - Protein Information

**Name** EN2

#### Cellular Location

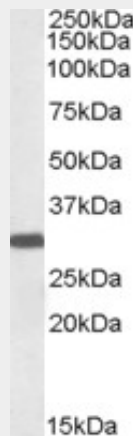
Nucleus.

### Goat Anti-Engrailed-2 Antibody - Protocols

Provided below are standard protocols that you may find useful for product applications.

- [Western Blot](#)
- [Blocking Peptides](#)
- [Dot Blot](#)
- [Immunohistochemistry](#)
- [Immunofluorescence](#)
- [Immunoprecipitation](#)
- [Flow Cytometry](#)
- [Cell Culture](#)

#### Goat Anti-Engrailed-2 Antibody - Images



AF1369a (0.1 µg/ml) staining of Rat Brain lysate (35 µg protein in RIPA buffer). Primary incubation was 1 hour. Detected by chemiluminescence.

#### Goat Anti-Engrailed-2 Antibody - Background

Homeobox-containing genes are thought to have a role in controlling development. In *Drosophila*, the 'engrailed' (*en*) gene plays an important role during development in segmentation, where it is required for the formation of posterior compartments. Different mutations in the mouse homologs, *En1* and *En2*, produced different developmental defects that frequently are lethal. The human engrailed homologs 1 and 2 encode homeodomain-containing proteins and have been implicated in the control of pattern formation during development of the central nervous system.

#### Goat Anti-Engrailed-2 Antibody - References

Intronic single nucleotide polymorphisms of engrailed homeobox 2 modulate the disease vulnerability of autism in a han chinese population. Yang P, et al. *Neuropsychobiology*, 2010. PMID 20523082.

Family-based studies indicate association of Engrailed 2 gene with autism in an Indian population. Sen B, et al. *Genes Brain Behav*, 2010 Mar 1. PMID 20050924.

Autism-associated haplotype affects the regulation of the homeobox gene, ENGRAILED 2. Benayed R, et al. *Biol Psychiatry*, 2009 Nov 15. PMID 19615670.

Haplotype analysis of the engrailed-2 gene in young-onset Parkinson's disease. Rissling I, et al. *Neurodegener Dis*, 2009. PMID 19270442.

Engrailed-2 regulates genes related to vesicle formation and transport in cerebellar Purkinje cells. Holst MI, et al. *Mol Cell Neurosci*, 2008 Aug. PMID 18562208.