

**Goat Anti-ELMO1 Antibody**  
Peptide-affinity purified goat antibody  
Catalog # AF1363a

## Specification

---

### Goat Anti-ELMO1 Antibody - Product Information

Application	WB
Primary Accession	<a href="#">O92556</a>
Other Accession	<a href="#">NP_001034548</a> , <a href="#">9844</a> , <a href="#">140580 (mouse)</a>
Reactivity	Human, Zebrafish, Bovine
Predicted	Mouse, Rat, Dog
Host	Goat
Clonality	Polyclonal
Concentration	100ug/200ul
Isotype	IgG
Calculated MW	83829

### Goat Anti-ELMO1 Antibody - Additional Information

**Gene ID** 9844

#### Other Names

Engulfment and cell motility protein 1, Protein ced-12 homolog, ELMO1, KIAA0281

#### Format

0.5 mg IgG/ml in Tris saline (20mM Tris pH7.3, 150mM NaCl), 0.02% sodium azide, with 0.5% bovine serum albumin

#### Storage

Maintain refrigerated at 2-8°C for up to 6 months. For long term storage store at -20°C in small aliquots to prevent freeze-thaw cycles.

#### Precautions

Goat Anti-ELMO1 Antibody is for research use only and not for use in diagnostic or therapeutic procedures.

### Goat Anti-ELMO1 Antibody - Protein Information

**Name** ELMO1

**Synonyms** KIAA0281

#### Function

Involved in cytoskeletal rearrangements required for phagocytosis of apoptotic cells and cell motility. Acts in association with DOCK1 and CRK. Was initially proposed to be required in complex with DOCK1 to activate Rac Rho small GTPases. May enhance the guanine nucleotide exchange factor (GEF) activity of DOCK1.

### Cellular Location

Cytoplasm. Cell membrane. Note=Translocation to plasma membrane seems to be mediated by DOCK1 and CRK

### Tissue Location

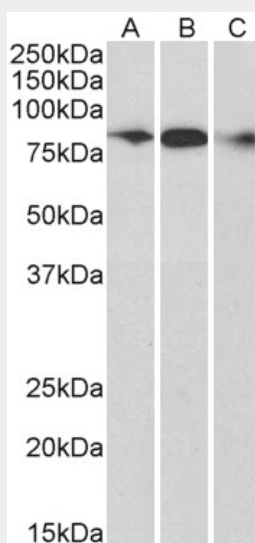
Widely expressed, with a higher expression in the spleen and placenta

### Goat Anti-ELMO1 Antibody - Protocols

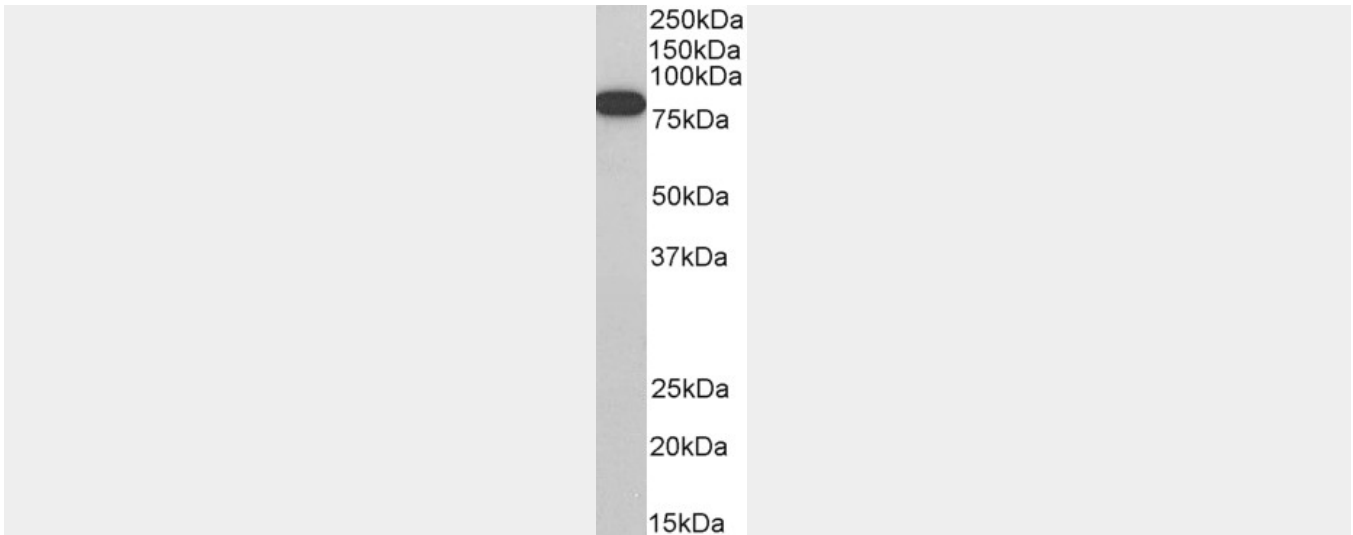
Provided below are standard protocols that you may find useful for product applications.

- [Western Blot](#)
- [Blocking Peptides](#)
- [Dot Blot](#)
- [Immunohistochemistry](#)
- [Immunofluorescence](#)
- [Immunoprecipitation](#)
- [Flow Cytometry](#)
- [Cell Culture](#)

### Goat Anti-ELMO1 Antibody - Images



AF1363a (0.3µg/ml) staining of Human Frontal Cortex (A), Mouse (B) and Rat (C) Brain lysate (35µg protein in RIPA buffer). Primary incubation was 1 hour. Detected by chemiluminescence.



AF1363a (0.3 $\mu$ g/ml) staining of Jurkat cell lysate (35 $\mu$ g protein in RIPA buffer). Primary incubation was 1 hour. Detected by chemiluminescence.

#### **Goat Anti-ELMO1 Antibody - Background**

The protein encoded by this gene interacts with the dedicator of cyto-kinesis 1 protein to promote phagocytosis and effect cell shape changes. Similarity to a *C. elegans* protein suggests that this protein may function in apoptosis and in cell migration. Alternative splicing of this gene results in multiple transcript variants encoding different isoforms.

#### **Goat Anti-ELMO1 Antibody - References**

Personalized smoking cessation: interactions between nicotine dose, dependence and quit-success genotype score. Rose JE, et al. *Mol Med*, 2010 Jul-Aug. PMID 20379614.  
Examination of association with candidate genes for diabetic nephropathy in a Mexican American population. Kim S, et al. *Clin J Am Soc Nephrol*, 2010 Jun. PMID 20299368.  
Multiple common variants for celiac disease influencing immune gene expression. Dubois PC, et al. *Nat Genet*, 2010 Apr. PMID 20190752.  
A genome-wide association scan of RR and QT interval duration in 3 European genetically isolated populations: the EUROSPAN project. Marroni F, et al. *Circ Cardiovasc Genet*, 2009 Aug. PMID 20031603.  
Genome-wide SNP genotyping study using pooled DNA to identify candidate markers mediating susceptibility to end-stage renal disease attributed to Type 1 diabetes. Craig DW, et al. *Diabet Med*, 2009 Nov. PMID 19929986.