

**Goat Anti-EBAG9 / RCAS1 Antibody**  
Peptide-affinity purified goat antibody  
Catalog # AF1352a

### Specification

---

#### Goat Anti-EBAG9 / RCAS1 Antibody - Product Information

Application	WB
Primary Accession	<a href="#">O00559</a>
Other Accession	<a href="#">NP_004206</a> , <a href="#">9166</a> , <a href="#">55960 (mouse)</a> , <a href="#">299864 (rat)</a>
Reactivity	Human
Predicted	Mouse, Rat, Dog
Host	Goat
Clonality	Polyclonal
Concentration	100ug/200ul
Isotype	IgG
Calculated MW	24377

#### Goat Anti-EBAG9 / RCAS1 Antibody - Additional Information

**Gene ID** 9166

#### Other Names

Receptor-binding cancer antigen expressed on SiSo cells, Cancer-associated surface antigen RCAS1, Estrogen receptor-binding fragment-associated gene 9 protein, EBAG9, RCAS1

#### Format

0.5 mg IgG/ml in Tris saline (20mM Tris pH7.3, 150mM NaCl), 0.02% sodium azide, with 0.5% bovine serum albumin

#### Storage

Maintain refrigerated at 2-8°C for up to 6 months. For long term storage store at -20°C in small aliquots to prevent freeze-thaw cycles.

#### Precautions

Goat Anti-EBAG9 / RCAS1 Antibody is for research use only and not for use in diagnostic or therapeutic procedures.

#### Goat Anti-EBAG9 / RCAS1 Antibody - Protein Information

**Name** EBAG9

**Synonyms** RCAS1

#### Function

May participate in suppression of cell proliferation and induces apoptotic cell death through activation of interleukin-1-beta converting enzyme (ICE)-like proteases.

### Cellular Location

Golgi apparatus membrane; Single-pass type III membrane protein. Note=According to PubMed:10426319, it also exists as a soluble form which has the same biological activities The existence of such soluble form is however uncertain

### Tissue Location

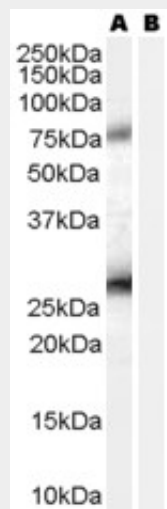
Widely expressed. Expressed in ovary, testis, prostate, thymus, muscle and heart, but not in small intestine, colon, lymph nodes, or peripheral blood lymphocytes. The protein is not detected in any of the above organs

## Goat Anti-EBAG9 / RCAS1 Antibody - Protocols

Provided below are standard protocols that you may find useful for product applications.

- [Western Blot](#)
- [Blocking Peptides](#)
- [Dot Blot](#)
- [Immunohistochemistry](#)
- [Immunofluorescence](#)
- [Immunoprecipitation](#)
- [Flow Cytometry](#)
- [Cell Culture](#)

## Goat Anti-EBAG9 / RCAS1 Antibody - Images



AF1352a (0.2 µg/ml) staining of A431 lysate (35 µg protein in RIPA buffer) with (B) and without (A) blocking with the immunising peptide. Primary incubation was 1 hour. Detected by chemiluminescence.

## Goat Anti-EBAG9 / RCAS1 Antibody - Background

This gene was identified as an estrogen-responsive gene. Regulation of transcription by estrogen is mediated by estrogen receptor which binds to the estrogen-responsive element (ERE) found in the 5'-flanking region of this gene. The encoded protein is a tumor-associated antigen that is expressed at high frequency in a variety of cancers. Two transcript variants differing in the 5' UTR, but encoding the same protein, have been identified for this gene.

## Goat Anti-EBAG9 / RCAS1 Antibody - References

Analysis of the expression of human tumor antigens in ovarian cancer tissues. Ali-Fehmi R, et al. *Cancer Biomark*, 2010. PMID 20164540.

Receptor-binding cancer antigen expressed on SiSo cells induces apoptosis via ectodomain shedding. Sonoda K, et al. *Exp Cell Res*, 2010 Jul 1. PMID 20079734.

[Evaluation of RCAS1 as serum tumor marker for pancreatic cancer] Yang YC, et al. *Zhonghua Wai Ke Za Zhi*, 2009 Jul 1. PMID 19957811.

Expression of RCAS1 protein in microglia/macrophages accompanying brain tumours. An immunofluorescence study. Adamek D, et al. *Folia Neuropathol*, 2009. PMID 19813143.

Diagnostic and prognostic utility of serum receptor-binding cancer antigen expressed on SiSo cells (RCAS1) levels in colon cancer patients. Giaginis C, et al. *Int J Biol Markers*, 2009 Apr-Jun. PMID 19634109.