

Goat Anti-CYB561D2 Antibody
Peptide-affinity purified goat antibody
Catalog # AF1287a

Specification

Goat Anti-CYB561D2 Antibody - Product Information

Application	WB
Primary Accession	O14569
Other Accession	NP_008953 , 11068 , 56368 (mouse)
Reactivity	Human
Predicted	Mouse, Rat, Dog
Host	Goat
Clonality	Polyclonal
Concentration	100ug/200ul
Isotype	IgG
Calculated MW	23974

Goat Anti-CYB561D2 Antibody - Additional Information

Gene ID 11068

Other Names

Cytochrome b561 domain-containing protein 2, Putative tumor suppressor protein 101F6, CYB561D2, 101F6

Format

0.5 mg IgG/ml in Tris saline (20mM Tris pH7.3, 150mM NaCl), 0.02% sodium azide, with 0.5% bovine serum albumin

Storage

Maintain refrigerated at 2-8°C for up to 6 months. For long term storage store at -20°C in small aliquots to prevent freeze-thaw cycles.

Precautions

Goat Anti-CYB561D2 Antibody is for research use only and not for use in diagnostic or therapeutic procedures.

Goat Anti-CYB561D2 Antibody - Protein Information

Name CYB561D2 ([HGNC:30253](#))

Function

Transmembrane reductase that may use ascorbate as an electron donor in the cytoplasm and transfer electrons across endoplasmic reticulum membranes to reduce monodehydro-L-ascorbate radical and iron cations Fe(3+) in the lumen of that compartment.

Cellular Location

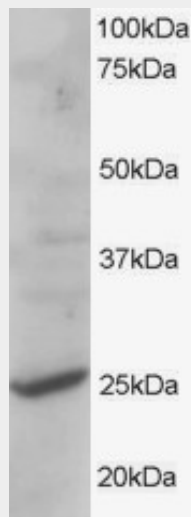
Endoplasmic reticulum membrane {ECO:0000250|UniProtKB:Q9WUE3}; Multi-pass membrane protein {ECO:0000250|UniProtKB:Q53TN4}. Cytoplasmic vesicle membrane {ECO:0000250|UniProtKB:Q9WUE3}; Multi-pass membrane protein {ECO:0000250|UniProtKB:Q53TN4}

Goat Anti-CYB561D2 Antibody - Protocols

Provided below are standard protocols that you may find useful for product applications.

- [Western Blot](#)
- [Blocking Peptides](#)
- [Dot Blot](#)
- [Immunohistochemistry](#)
- [Immunofluorescence](#)
- [Immunoprecipitation](#)
- [Flow Cytometry](#)
- [Cell Culture](#)

Goat Anti-CYB561D2 Antibody - Images



AF1287a staining (1 µg/ml) of human liver lysate (RIPA buffer, 35 µg total protein per lane). Primary incubated for 1 hour. Detected by western blot using chemiluminescence.

Goat Anti-CYB561D2 Antibody - References

Functional expression and characterization of human 101F6 protein, a homologue of cytochrome b561 and a candidate tumor suppressor gene product. Recuenco MC, et al. Biofactors, 2009. PMID 19734123.

The DNA sequence, annotation and analysis of human chromosome 3. Muzny DM, et al. Nature, 2006 Apr 27. PMID 16641997.

A human protein-protein interaction network: a resource for annotating the proteome. Stelzl U, et al. Cell, 2005 Sep 23. PMID 16169070.

The status, quality, and expansion of the NIH full-length cDNA project: the Mammalian Gene Collection (MGC). Gerhard DS, et al. Genome Res, 2004 Oct. PMID 15489334.

Generation and initial analysis of more than 15,000 full-length human and mouse cDNA sequences. Strausberg RL, et al. Proc Natl Acad Sci U S A, 2002 Dec 24. PMID 12477932.