

Goat Anti-CLIC4 Antibody
Peptide-affinity purified goat antibody
Catalog # AF1249a

Specification

Goat Anti-CLIC4 Antibody - Product Information

| | |
|-------------------|---|
| Application | ICC, WB |
| Primary Accession | O9Y696 |
| Other Accession | NP_039234 , 25932 , 29876 (mouse) , 83718 (rat) |
| Reactivity | Human, Mouse |
| Predicted | Rat, Dog |
| Host | Goat |
| Clonality | Polyclonal |
| Concentration | 100ug/200ul |
| Isotype | IgG |
| Calculated MW | 28772 |

Goat Anti-CLIC4 Antibody - Additional Information

Gene ID 25932

Other Names

Chloride intracellular channel protein 4, Intracellular chloride ion channel protein p64H1, CLIC4

Format

0.5 mg IgG/ml in Tris saline (20mM Tris pH7.3, 150mM NaCl), 0.02% sodium azide, with 0.5% bovine serum albumin

Storage

Maintain refrigerated at 2-8°C for up to 6 months. For long term storage store at -20°C in small aliquots to prevent freeze-thaw cycles.

Precautions

Goat Anti-CLIC4 Antibody is for research use only and not for use in diagnostic or therapeutic procedures.

Goat Anti-CLIC4 Antibody - Protein Information

Name CLIC4 {ECO:0000303|PubMed:12163372, ECO:0000312|HGNC:HGNC:13518}

Function

In the soluble state, catalyzes glutaredoxin-like thiol disulfide exchange reactions with reduced glutathione as electron donor (PubMed:25581026, PubMed:37759794). Can insert into membranes and form voltage-dependent multi-ion conductive channels. Membrane insertion seems to be redox-regulated and may occur only under oxidizing conditions (By similarity) (PubMed:<a

[16176272](http://www.uniprot.org/citations/16176272)). Has alternate cellular functions like a potential role in angiogenesis or in maintaining apical-basolateral membrane polarity during mitosis and cytokinesis. Could also promote endothelial cell proliferation and regulate endothelial morphogenesis (tubulogenesis). Promotes cell-surface expression of HRH3.

Cellular Location

Cytoplasm, cytoskeleton, microtubule organizing center, centrosome. Cytoplasmic vesicle membrane; Single-pass membrane protein. Nucleus. Cell membrane; Single-pass membrane protein. Mitochondrion {ECO:0000250|UniProtKB:Q9Z0W7}. Cell junction. Endoplasmic reticulum membrane {ECO:0000250|UniProtKB:Q9Z0W7}; Single-pass membrane protein {ECO:0000250|UniProtKB:Q9Z0W7}. Note=Colocalized with AKAP9 at the centrosome and midbody. Exists both as soluble cytoplasmic protein and as membrane protein with probably a single transmembrane domain Present in an intracellular vesicular compartment that likely represent trans-Golgi network vesicles. Might not be present in the nucleus of cardiac cells. {ECO:0000250|UniProtKB:Q9Z0W7, ECO:0000269|PubMed:14569596}

Tissue Location

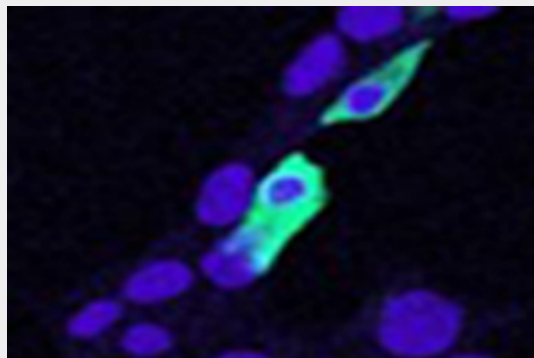
Detected in epithelial cells from colon, esophagus and kidney (at protein level). Expression is prominent in heart, kidney, placenta and skeletal muscle.

Goat Anti-CLIC4 Antibody - Protocols

Provided below are standard protocols that you may find useful for product applications.

- [Western Blot](#)
- [Blocking Peptides](#)
- [Dot Blot](#)
- [Immunohistochemistry](#)
- [Immunofluorescence](#)
- [Immunoprecipitation](#)
- [Flow Cytometry](#)
- [Cell Culture](#)

Goat Anti-CLIC4 Antibody - Images



AF1249a (5ug/ml) staining of min6 cells transiently expressing mouse Clic4. Nuclear counterstain by Hoechst. Data kindly provided by Dr. Virginie Nepote, Lausanne University, Switzerland.



AF1249a (0.1 $\mu\text{g/ml}$) staining of human kidney lysate (35 μg protein in RIPA buffer). Primary incubation was 1 hour. Detected by chemiluminescence.

Goat Anti-CLIC4 Antibody - Background

Chloride channels are a diverse group of proteins that regulate fundamental cellular processes including stabilization of cell membrane potential, transepithelial transport, maintenance of intracellular pH, and regulation of cell volume. Chloride intracellular channel 4 (CLIC4) protein, encoded by the CLIC4 gene, is a member of the p64 family; the gene is expressed in many tissues and exhibits a intracellular vesicular pattern in Panc-1 cells (pancreatic cancer cells).

Goat Anti-CLIC4 Antibody - References

Personalized smoking cessation: interactions between nicotine dose, dependence and quit-success genotype score. Rose JE, et al. *Mol Med*, 2010 Jul-Aug. PMID 20379614.
Mutation detection in candidate genes for benign familial infantile seizures on a novel locus. Li N, et al. *Int J Neurosci*, 2010 Mar. PMID 20374090.
Spatiotemporal regulation of chloride intracellular channel protein CLIC4 by RhoA. Ponsioen B, et al. *Mol Biol Cell*, 2009 Nov. PMID 19776349.
S100A4 and bone morphogenetic protein-2 codependently induce vascular smooth muscle cell migration via phospho-extracellular signal-regulated kinase and chloride intracellular channel 4. Spiekerkoetter E, et al. *Circ Res*, 2009 Sep 25. PMID 19713532.
CLIC4 mediates TGF-beta1-induced fibroblast-to-myofibroblast transdifferentiation in ovarian cancer. Yao Q, et al. *Oncol Rep*, 2009 Sep. PMID 19639201.