

Goat Anti-CD11A / integrin alpha L Antibody
Peptide-affinity purified goat antibody
Catalog # AF1212a

Specification

Goat Anti-CD11A / integrin alpha L Antibody - Product Information

Application	WB, IHC
Primary Accession	P20701
Other Accession	NP_001107852 , 3683
Reactivity	Human
Predicted	Dog
Host	Goat
Clonality	Polyclonal
Concentration	100ug/200ul
Isotype	IgG
Calculated MW	128770

Goat Anti-CD11A / integrin alpha L Antibody - Additional Information

Gene ID 3683

Other Names

Integrin alpha-L, CD11 antigen-like family member A, Leukocyte adhesion glycoprotein LFA-1 alpha chain, LFA-1A, Leukocyte function-associated molecule 1 alpha chain, CD11a, ITGAL, CD11A

Format

0.5 mg IgG/ml in Tris saline (20mM Tris pH7.3, 150mM NaCl), 0.02% sodium azide, with 0.5% bovine serum albumin

Storage

Maintain refrigerated at 2-8°C for up to 6 months. For long term storage store at -20°C in small aliquots to prevent freeze-thaw cycles.

Precautions

Goat Anti-CD11A / integrin alpha L Antibody is for research use only and not for use in diagnostic or therapeutic procedures.

Goat Anti-CD11A / integrin alpha L Antibody - Protein Information

Name ITGAL ([HGNC:6148](#))

Synonyms CD11A

Function

Integrin ITGAL/ITGB2 is a receptor for ICAM1, ICAM2, ICAM3 and ICAM4. Integrin ITGAL/ITGB2 is a receptor for F11R (PubMed:11812992, PubMed:<a href="http://www.uniprot.org/citations/15528364"

target="_blank">15528364). Integrin ITGAL/ITGB2 is a receptor for the secreted form of ubiquitin-like protein ISG15; the interaction is mediated by ITGAL (PubMed:29100055). Involved in a variety of immune phenomena including leukocyte-endothelial cell interaction, cytotoxic T-cell mediated killing, and antibody dependent killing by granulocytes and monocytes. Contributes to natural killer cell cytotoxicity (PubMed:15356110). Involved in leukocyte adhesion and transmigration of leukocytes including T-cells and neutrophils (PubMed:11812992). Acts as a platform at the immunological synapse to translate TCR engagement and density of the ITGAL ligand ICAM1 into graded adhesion (PubMed:38195629). Required for generation of common lymphoid progenitor cells in bone marrow, indicating a role in lymphopoiesis (By similarity). Integrin ITGAL/ITGB2 in association with ICAM3, contributes to apoptotic neutrophil phagocytosis by macrophages (PubMed:23775590).

Cellular Location

Cell membrane; Single-pass type I membrane protein. Note=Upon antigen recognition by the TCR, is recruited to lipid rafts (PubMed:15684041).

Tissue Location

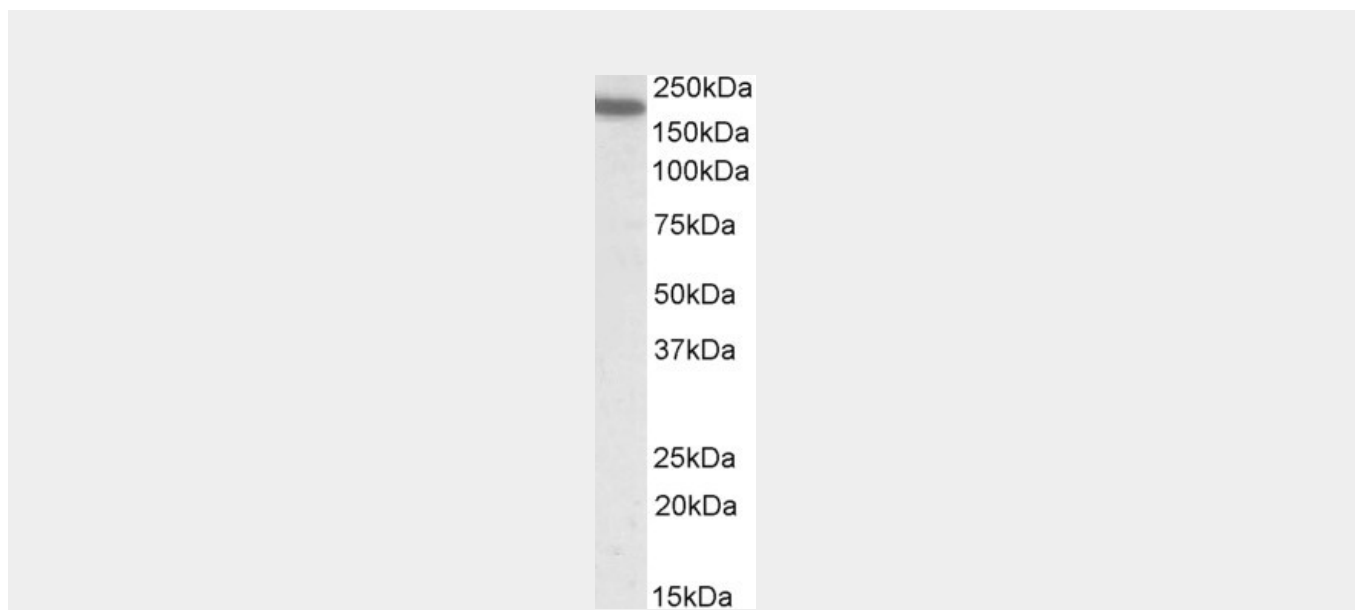
Leukocytes.

Goat Anti-CD11A / integrin alpha L Antibody - Protocols

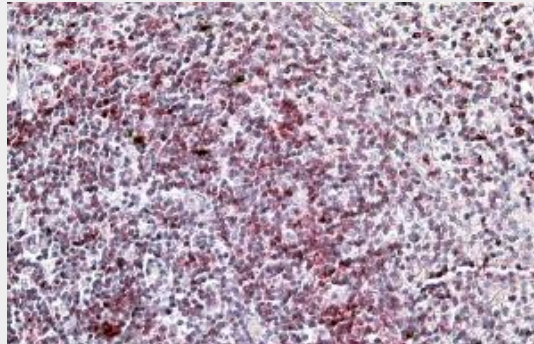
Provided below are standard protocols that you may find useful for product applications.

- [Western Blot](#)
- [Blocking Peptides](#)
- [Dot Blot](#)
- [Immunohistochemistry](#)
- [Immunofluorescence](#)
- [Immunoprecipitation](#)
- [Flow Cytometry](#)
- [Cell Culture](#)

Goat Anti-CD11A / integrin alpha L Antibody - Images



AF1212a (0.5 µg/ml) staining of Human Spleen lysate (35 µg protein in RIPA buffer). Primary incubation was 1 hour. Detected by chemiluminescence.



AF1212a (3.8 µg/ml) staining of paraffin embedded Human Spleen. Steamed antigen retrieval with citrate buffer pH 6, AP-staining.

Goat Anti-CD11A / integrin alpha L Antibody - Background

ITGAL encodes the integrin alpha L chain. Integrins are heterodimeric integral membrane proteins composed of an alpha chain and a beta chain. This I-domain containing alpha integrin combines with the beta 2 chain (ITGB2) to form the integrin lymphocyte function-associated antigen-1 (LFA-1), which is expressed on all leukocytes. LFA-1 plays a central role in leukocyte intercellular adhesion through interactions with its ligands, ICAMs 1-3 (intercellular adhesion molecules 1 through 3), and also functions in lymphocyte costimulatory signaling. Two transcript variants encoding different isoforms have been found for this gene.

Goat Anti-CD11A / integrin alpha L Antibody - References

Variation at the NFATC2 Locus Increases the Risk of Thiazolinedione-Induced Edema in the Diabetes REduction Assessment with ramipril and rosiglitazone Medication (DREAM) Study. Bailey SD, et al. *Diabetes Care*, 2010 Jul 13. PMID 20628086.

Mesenchymal stem cells inhibit human Th17 cell differentiation and function and induce a T regulatory cell phenotype. Ghannam S, et al. *J Immunol*, 2010 Jul 1. PMID 20511548.

Rolling on E- or P-selectin induces the extended but not high-affinity conformation of LFA-1 in neutrophils. Kuwano Y, et al. *Blood*, 2010 Jul 29. PMID 20445017.

Genetic variation in 3-hydroxy-3-methylglutaryl CoA reductase modifies the chemopreventive activity of statins for colorectal cancer. Lipkin SM, et al. *Cancer Prev Res (Phila)*, 2010 May. PMID 20403997.

A transmembrane polar interaction is involved in the functional regulation of integrin alpha L beta 2. Vararattanavech A, et al. *J Mol Biol*, 2010 May 14. PMID 20338181.