

**Goat Anti-CBX8 Antibody**  
Peptide-affinity purified goat antibody  
Catalog # AF1206a

### Specification

---

#### Goat Anti-CBX8 Antibody - Product Information

Application	WB
Primary Accession	<a href="#">O9HC52</a>
Other Accession	<a href="#">NP_065700</a> , <a href="#">57332</a> , <a href="#">30951 (mouse)</a>
Reactivity	Human
Predicted	Mouse, Rat, Pig
Host	Goat
Clonality	Polyclonal
Concentration	100ug/200ul
Isotype	IgG
Calculated MW	43396

#### Goat Anti-CBX8 Antibody - Additional Information

**Gene ID** 57332

#### Other Names

Chromobox protein homolog 8, Polycomb 3 homolog, Pc3, hPc3, Rectachrome 1, CBX8, PC3, RC1

#### Format

0.5 mg IgG/ml in Tris saline (20mM Tris pH7.3, 150mM NaCl), 0.02% sodium azide, with 0.5% bovine serum albumin

#### Storage

Maintain refrigerated at 2-8°C for up to 6 months. For long term storage store at -20°C in small aliquots to prevent freeze-thaw cycles.

#### Precautions

Goat Anti-CBX8 Antibody is for research use only and not for use in diagnostic or therapeutic procedures.

#### Goat Anti-CBX8 Antibody - Protein Information

**Name** CBX8

**Synonyms** PC3, RC1

#### Function

Component of a Polycomb group (PcG) multiprotein PRC1-like complex, a complex class required to maintain the transcriptionally repressive state of many genes, including Hox genes, throughout development. PcG PRC1 complex acts via chromatin remodeling and modification of histones; it mediates monoubiquitination of histone H2A 'Lys-119', rendering chromatin heritably changed in

its expressibility.

#### Cellular Location

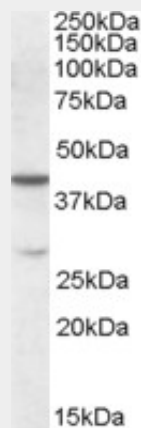
Nucleus.

#### Goat Anti-CBX8 Antibody - Protocols

Provided below are standard protocols that you may find useful for product applications.

- [Western Blot](#)
- [Blocking Peptides](#)
- [Dot Blot](#)
- [Immunohistochemistry](#)
- [Immunofluorescence](#)
- [Immunoprecipitation](#)
- [Flow Cytometry](#)
- [Cell Culture](#)

#### Goat Anti-CBX8 Antibody - Images



AF1206a (0.1 µg/ml) staining of K562 lysate (35 µg protein in RIPA buffer). Primary incubation was 1 hour. Detected by chemiluminescence.

#### Goat Anti-CBX8 Antibody - References

A phosphorylated form of Mel-18 targets the Ring1B histone H2A ubiquitin ligase to chromatin. Elderkin S, et al. Mol Cell, 2007 Oct 12. PMID 17936708.

Bypass of senescence by the polycomb group protein CBX8 through direct binding to the INK4A-ARF locus. Dietrich N, et al. EMBO J, 2007 Mar 21. PMID 17332741.

A human protein-protein interaction network: a resource for annotating the proteome. Stelzl U, et al. Cell, 2005 Sep 23. PMID 16169070.

The status, quality, and expansion of the NIH full-length cDNA project: the Mammalian Gene Collection (MGC). Gerhard DS, et al. Genome Res, 2004 Oct. PMID 15489334.

Proteomics analysis of the centromere complex from HeLa interphase cells: UV-damaged DNA binding protein 1 (DDB-1) is a component of the CEN-complex, while BMI-1 is transiently co-localized with the centromeric region in interphase. Obuse C, et al. Genes Cells, 2004 Feb. PMID 15009096.