

Goat Anti-CARD6 Antibody
Peptide-affinity purified goat antibody
Catalog # AF1192a

Specification

Goat Anti-CARD6 Antibody - Product Information

Application	IHC
Primary Accession	O9BX69
Other Accession	NP_115976 , 84674
Reactivity	Human
Host	Goat
Clonality	Polyclonal
Concentration	100ug/200ul
Isotype	IgG
Calculated MW	116468

Goat Anti-CARD6 Antibody - Additional Information

Gene ID 84674

Other Names

Caspase recruitment domain-containing protein 6, CARD6

Format

0.5 mg IgG/ml in Tris saline (20mM Tris pH7.3, 150mM NaCl), 0.02% sodium azide, with 0.5% bovine serum albumin

Storage

Maintain refrigerated at 2-8°C for up to 6 months. For long term storage store at -20°C in small aliquots to prevent freeze-thaw cycles.

Precautions

Goat Anti-CARD6 Antibody is for research use only and not for use in diagnostic or therapeutic procedures.

Goat Anti-CARD6 Antibody - Protein Information

Name CARD6

Function

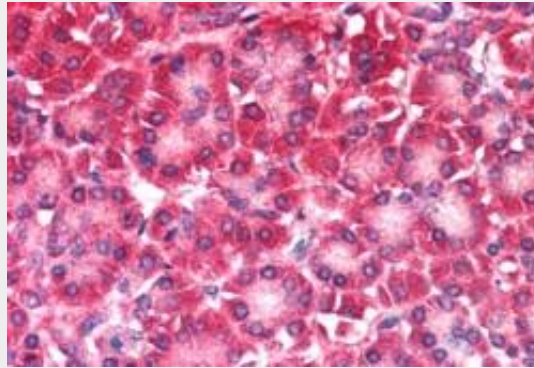
May be involved in apoptosis.

Goat Anti-CARD6 Antibody - Protocols

Provided below are standard protocols that you may find useful for product applications.

- [Western Blot](#)
- [Blocking Peptides](#)
- [Dot Blot](#)
- [Immunohistochemistry](#)
- [Immunofluorescence](#)
- [Immunoprecipitation](#)
- [Flow Cytometry](#)
- [Cell Culture](#)

Goat Anti-CARD6 Antibody - Images



AF1192a (5 µg/ml) staining of paraffin embedded Human Pancreas. Steamed antigen retrieval with citrate buffer pH 6, AP-staining.

Goat Anti-CARD6 Antibody - Background

This gene encodes a protein that contains a caspase recruitment domain (CARD), an antiparallel six-helical bundle that mediates homotypic protein-protein interactions. The encoded protein is a microtubule-associated protein that has been shown to interact with receptor-interacting protein kinases and positively modulate signal transduction pathways converging on activation of the inducible transcription factor NF- κ B.

Goat Anti-CARD6 Antibody - References

- Expression of CARD6, an NF-kappaB activator, in gastric, colorectal and oesophageal cancers. Kim SS, et al. Pathology, 2010 Jan. PMID 20025480.
- Global, in vivo, and site-specific phosphorylation dynamics in signaling networks. Olsen JV, et al. Cell, 2006 Nov 3. PMID 17081983.
- CARD tricks: controlling the interactions of CARD6 with RICK and microtubules. Dufner A, et al. Cell Cycle, 2006 Apr. PMID 16582588.
- Caspase recruitment domain protein 6 is a microtubule-interacting protein that positively modulates NF-kappaB activation. Dufner A, et al. Proc Natl Acad Sci U S A, 2006 Jan 24. PMID 16418290.
- CARD6 is a modulator of NF-kappa B activation by Nod1- and Cardiak-mediated pathways. Stehlik C, et al. J Biol Chem, 2003 Aug 22. PMID 12775719.