

**Ezrin Antibody (T567)**  
**Purified Rabbit Polyclonal Antibody (Pab)**  
**Catalog # AE1012a**

**Specification**

---

**Ezrin Antibody (T567) - Product Information**

|                   |                        |
|-------------------|------------------------|
| Application       | WB                     |
| Primary Accession | <a href="#">P15311</a> |
| Reactivity        | Human, Mouse, Rat      |
| Host              | Rabbit                 |
| Clonality         | Polyclonal             |
| Concentration     | 1mg/ml                 |
| Isotype           | Rabbit IgG             |
| Calculated MW     | 69413                  |

**Ezrin Antibody (T567) - Additional Information**

**Gene ID** 7430

**Other Names**

Ezrin, Cytovillin, Villin-2, p81, EZR, VIL2

**Target/Specificity**

The antibody was affinity-purified from rabbit antiserum by affinity-chromatography using epitope-specific immunogen.

**Dilution**

WB~~1:500~1:1000

**Format**

affinity Purified IgG, in PBS, 0.02% sodium azide and 50% glycerol.

**Storage**

Maintain refrigerated at 2-8°C for up to 6 months. For long term storage store at -20°C in small aliquots to prevent freeze-thaw cycles.

**Precautions**

Ezrin Antibody (T567) is for research use only and not for use in diagnostic or therapeutic procedures.

**Ezrin Antibody (T567) - Protein Information**

**Name** EZR

**Synonyms** VIL2

**Function**

Probably involved in connections of major cytoskeletal structures to the plasma membrane. In epithelial cells, required for the formation of microvilli and membrane ruffles on the apical pole. Along with PLEKHG6, required for normal macropinocytosis.

#### Cellular Location

Apical cell membrane; Peripheral membrane protein; Cytoplasmic side. Cell projection. Cell projection, microvillus membrane; Peripheral membrane protein; Cytoplasmic side. Cell projection, ruffle membrane; Peripheral membrane protein; Cytoplasmic side. Cytoplasm, cell cortex. Cytoplasm, cytoskeleton. Cell projection, microvillus {ECO:0000250|UniProtKB:P26040}. Note=Localization to the apical membrane of parietal cells depends on the interaction with PALS1 Localizes to cell extensions and peripheral processes of astrocytes (By similarity). Microvillar peripheral membrane protein (cytoplasmic side). {ECO:0000250|UniProtKB:P31977}

#### Tissue Location

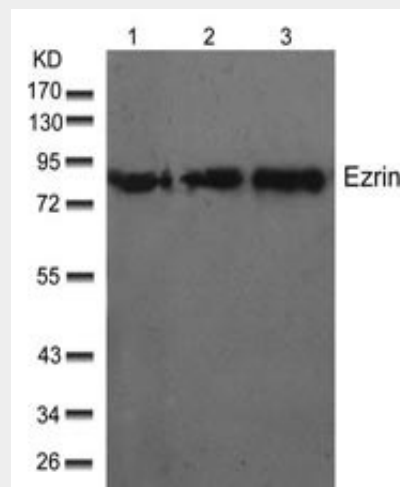
Expressed in cerebral cortex, basal ganglia, hippocampus, hypophysis, and optic nerve. Weakly expressed in brain stem and diencephalon. Stronger expression was detected in gray matter of frontal lobe compared to white matter (at protein level). Component of the microvilli of intestinal epithelial cells. Preferentially expressed in astrocytes of hippocampus, frontal cortex, thalamus, parahippocampal cortex, amygdala, insula, and corpus callosum. Not detected in neurons in most tissues studied

#### Ezrin Antibody (T567) - Protocols

Provided below are standard protocols that you may find useful for product applications.

- [Western Blot](#)
- [Blocking Peptides](#)
- [Dot Blot](#)
- [Immunohistochemistry](#)
- [Immunofluorescence](#)
- [Immunoprecipitation](#)
- [Flow Cytometry](#)
- [Cell Culture](#)

#### Ezrin Antibody (T567) - Images



Western blot analysis of extracts from Hela cells (Lane 1), MDA231 cells (Lane 2), 3T3 cells (Lane 3) using Ezrin Antibody (T567) (#AE1012a).

### **Ezrin Antibody (T567) - Background**

The cytoplasmic peripheral membrane protein encoded by this gene functions as a protein-tyrosine kinase substrate in microvilli. As a member of the ERM protein family, this protein serves as an intermediate between the plasma membrane and the actin cytoskeleton. This protein plays a key role in cell surface structure adhesion, migration and organization, and it has been implicated in various human cancers. A pseudogene located on chromosome 3 has been identified for this gene. Alternatively spliced variants have also been described for this gene.

### **Ezrin Antibody (T567) - References**

Ezrin immunoreactivity in renal cell carcinomas. Tuna B, et al. *Anal Quant Cytol Histol*, 2009 Oct. PMID 20701102.

Evaluation of candidate stromal epithelial cross-talk genes identifies association between risk of serous ovarian cancer and TERT, a cancer susceptibility hot-spot. Johnatty SE, et al. *PLoS Genet*, 2010 Jul 8. PMID 20628624.

Variation at the NFATC2 Locus Increases the Risk of Thiazolinedione-Induced Edema in the Diabetes REduction Assessment with ramipril and rosiglitazone Medication (DREAM) Study. Bailey SD, et al. *Diabetes Care*, 2010 Jul 13. PMID 20628086.

Immunoexpression of Ezrin and CD44 in patients with osteosarcoma. Boldrini E, et al. *J Pediatr Hematol Oncol*, 2010 Aug. PMID 20562647.

Ezrin immunohistochemical expression in chondrosarcomas, osteosarcomas and Ewing sarcoma family of tumors. Machado I, et al. *Virchows Arch*, 2010 Jul. PMID 20552365.