

Phospho-YWHAZ-pS58 Antibody
Purified Rabbit Polyclonal Antibody (Pab)
Catalog # AE1001b

Specification

Phospho-YWHAZ-pS58 Antibody - Product Information

Application	WB, IHC
Primary Accession	P63104
Reactivity	Human, Mouse, Rat
Host	Rabbit
Clonality	Polyclonal
Concentration	1mg/ml
Isotype	Rabbit IgG
Calculated MW	27745

Phospho-YWHAZ-pS58 Antibody - Additional Information

Gene ID 7534

Other Names

14-3-3 protein zeta/delta, Protein kinase C inhibitor protein 1, KCIP-1, YWHAZ

Target/Specificity

The antibody was affinity-purified from rabbit antiserum using epitope-specific phosphopeptide column, and the antibody against non-phosphopeptide was removed using non-phosphopeptide column corresponding to the phosphorylation site.

Dilution

WB~~1:500~1:1000
IHC~~1:50~1:100

Format

affinity Purified IgG, in PBS, 0.02% sodium azide and 50% glycerol.

Storage

Maintain refrigerated at 2-8°C for up to 6 months. For long term storage store at -20°C in small aliquots to prevent freeze-thaw cycles.

Precautions

Phospho-YWHAZ-pS58 Antibody is for research use only and not for use in diagnostic or therapeutic procedures.

Phospho-YWHAZ-pS58 Antibody - Protein Information

Name YWHAZ

Function

Adapter protein implicated in the regulation of a large spectrum of both general and specialized signaling pathways (PubMed:[14578935](http://www.uniprot.org/citations/14578935), PubMed:[15071501](http://www.uniprot.org/citations/15071501), PubMed:[15644438](http://www.uniprot.org/citations/15644438), PubMed:[16376338](http://www.uniprot.org/citations/16376338), PubMed:[16959763](http://www.uniprot.org/citations/16959763), PubMed:[31024343](http://www.uniprot.org/citations/31024343), PubMed:[9360956](http://www.uniprot.org/citations/9360956)). Binds to a large number of partners, usually by recognition of a phosphoserine or phosphothreonine motif (PubMed:[35662396](http://www.uniprot.org/citations/35662396)). Binding generally results in the modulation of the activity of the binding partner (PubMed:[35662396](http://www.uniprot.org/citations/35662396)). Promotes cytosolic retention and inactivation of TFEB transcription factor by binding to phosphorylated TFEB (PubMed:[35662396](http://www.uniprot.org/citations/35662396)). Induces ARHGEF7 activity on RAC1 as well as lamellipodia and membrane ruffle formation (PubMed:[16959763](http://www.uniprot.org/citations/16959763)). In neurons, regulates spine maturation through the modulation of ARHGEF7 activity (By similarity).

Cellular Location

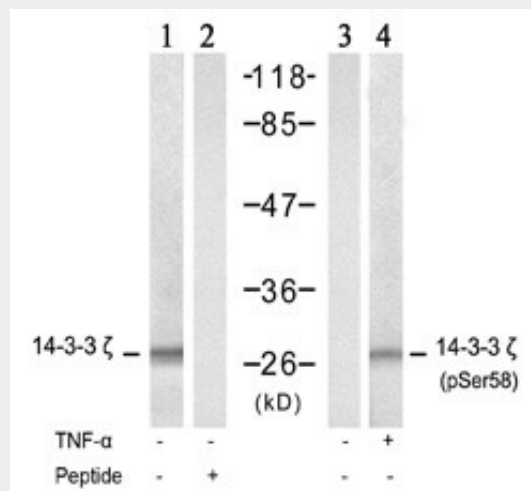
Cytoplasm. Melanosome. Note=Located to stage I to stage IV melanosomes.

Phospho-YWHAZ-pS58 Antibody - Protocols

Provided below are standard protocols that you may find useful for product applications.

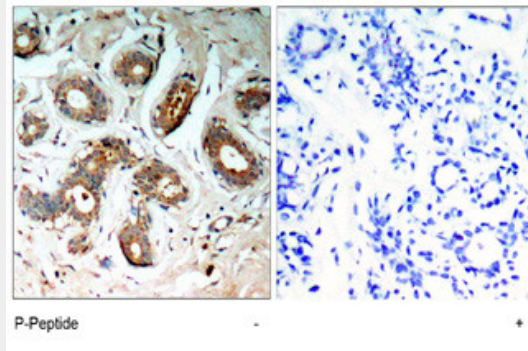
- [Western Blot](#)
- [Blocking Peptides](#)
- [Dot Blot](#)
- [Immunohistochemistry](#)
- [Immunofluorescence](#)
- [Immunoprecipitation](#)
- [Flow Cytometry](#)
- [Cell Culture](#)

Phospho-YWHAZ-pS58 Antibody - Images



Western blot analysis of extract from NIH/3T3 cells, untreated or treated with TNF-α (20ng/ml,

5min), using 14-3-3 Zeta (Delta) Antibody (S58) (#AE1001a, lane 1 and 2) and Phospho-14-3-3 Zeta (Delta)-S58 Antibody (AE1001b, lane 3 and 4).



Immunohistochemical analysis of paraffin-embedded human breast carcinoma tissue, using Phospho-14-3-3 Zeta (Delta)-S58 Antibody (#AE1001b).

Phospho-YWHAZ-pS58 Antibody - Background

This gene product belongs to the 14-3-3 family of proteins which mediate signal transduction by binding to phosphoserine-containing proteins. This highly conserved protein family is found in both plants and mammals, and this protein is 99% identical to the mouse, rat and sheep orthologs. The encoded protein interacts with IRS1 protein, suggesting a role in regulating insulin sensitivity. Several transcript variants that differ in the 5' UTR but that encode the same protein have been identified for this gene.

Phospho-YWHAZ-pS58 Antibody - References

Proteome analysis of the thalamus and cerebrospinal fluid reveals glycolysis dysfunction and potential biomarkers candidates for schizophrenia. Martins-de-Souza D, et al. J Psychiatr Res, 2010 May 14. PMID 20471030.

The expression of seven 14-3-3 isoforms in human meningioma. Liu Y, et al. Brain Res, 2010 Jun 8. PMID 20388496.

The C-terminal segment of yeast BMH proteins exhibits different structure compared to other 14-3-3 protein isoforms. Veisova D, et al. Biochemistry, 2010 May 11. PMID 20384366.

Sex-specific proteome differences in the anterior cingulate cortex of schizophrenia. Martins-de-Souza D, et al. J Psychiatr Res, 2010 Apr 8. PMID 20381070.

Personalized smoking cessation: interactions between nicotine dose, dependence and quit-success genotype score. Rose JE, et al. Mol Med, 2010 Jul-Aug. PMID 20379614.