

**Granzyme B**  
Rabbit Monoclonal antibody(Mab)  
Catalog # AD80599

## Specification

---

### Granzyme B - Product info

Application	IHC-P
Primary Accession	<a href="#">P10144</a>
Reactivity	Human
Host	Rabbit
Clonality	Monoclonal
Calculated MW	27716

### Granzyme B - Additional info

Gene ID **3002**

#### Other Names

Granzyme B, 3.4.21.79, C11, CTLA-1, Cathepsin G-like 1, CTSL1, Cytotoxic T-lymphocyte proteinase 2, Lymphocyte protease, Fragmentin-2, Granzyme-2, Human lymphocyte protein, HLP, SECT, T-cell serine protease 1-3E, GZMB {ECO:0000303|PubMed:32188940, ECO:0000312|HGNC:HGNC:4709}

#### Dilution

IHC-P~~Ready-to-use

#### Storage

**This product is stored at 2-156 °C, please use it within the expiration date.**

### Granzyme B - Protein Information

**Name** GZMB {ECO:0000303|PubMed:32188940, ECO:0000312|HGNC:HGNC:4709}

#### Function

**Abundant protease in the cytosolic granules of cytotoxic T- cells and NK-cells which activates caspase-independent pyroptosis when delivered into the target cell through the immunological synapse (PubMed:[1985927](#), PubMed:[3262682](#), PubMed:[3263427](#)). It cleaves after Asp (PubMed:[1985927](#), PubMed:[8258716](#)). Once delivered into the target cell, acts by catalyzing cleavage of gasdermin-E (GSDME), releasing the pore- forming moiety of GSDME, thereby triggering pyroptosis and target cell death (PubMed:[31953257](#), PubMed:[32188940](#)). Seems to be linked to an activation cascade of caspases (aspartate-specific cysteine proteases) responsible for**

Cellular Location

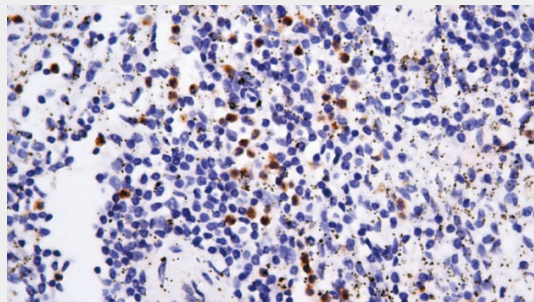
apoptosis execution. Cleaves caspase-3, -9 and -10 (CASP3, CASP9 and CASP10, respectively) to give rise to active enzymes mediating apoptosis (PubMed:[9852092](#)). Cleaves and activates CASP7 in response to bacterial infection, promoting plasma membrane repair (By similarity). Secreted. Cytolytic granule. Note=Delivered into the target cell by perforin (PubMed:[20038786](#)).

### Granzyme B - Protocols

Provided below are standard protocols that you may find useful for product applications.

- [Western Blot](#)
- [Blocking Peptides](#)
- [Dot Blot](#)
- [Immunohistochemistry](#)
- [Immunofluorescence](#)
- [Immunoprecipitation](#)
- [Flow Cytometry](#)
- [Cell Culture](#)

### Granzyme B - Images



Spleen