

**CD8**  
**Rabbit Monoclonal antibody(Mab)**  
**Catalog # AD80577**

## Specification

---

### CD8 - Product info

Application	IHC-P
Primary Accession	<a href="#">P01732</a>
Reactivity	Human
Host	Rabbit
Clonality	Monoclonal
Calculated MW	25729

### CD8 - Additional info

Gene ID **925**

#### Other Names

T-cell surface glycoprotein CD8 alpha chain, T-lymphocyte differentiation antigen T8/Leu-2, CD8a, CD8A, MAL

#### Dilution

IHC-P~~Ready-to-use

#### Storage

Maintain refrigerated at 2-8°C

### CD8 - Protein Information

Name CD8A

Synonyms

Function

**MAL**

**Integral membrane glycoprotein that plays an essential role in the immune response and serves multiple functions in responses against both external and internal offenses. In T-cells, functions primarily as a coreceptor for MHC class I molecule:peptide complex. The antigens presented by class I peptides are derived from cytosolic proteins while class II derived from extracellular proteins. Interacts simultaneously with the T-cell receptor (TCR) and the MHC class I proteins presented by antigen presenting cells (APCs). In turn, recruits the Src kinase LCK to the vicinity of the TCR-CD3 complex. LCK then initiates different intracellular signaling pathways by**

phosphorylating various substrates ultimately leading to lymphokine production, motility, adhesion and activation of cytotoxic T- lymphocytes (CTLs). This mechanism enables CTLs to recognize and eliminate infected cells and tumor cells. In NK-cells, the presence of CD8A homodimers at the cell surface provides a survival mechanism allowing conjugation and lysis of multiple target cells. CD8A homodimer molecules also promote the survival and differentiation of activated lymphocytes into memory CD8 T-cells.

Cellular Location

[Isoform 1]: Cell membrane; Single-pass type I membrane protein Note=CD8A localizes to lipid rafts only when associated with its partner CD8B.

Tissue Location

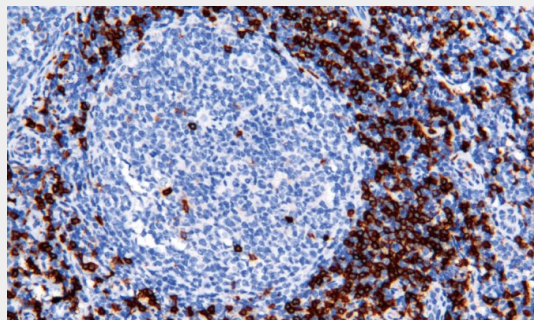
CD8 on thymus-derived T-cells usually consists of a disulfide-linked alpha/CD8A and a beta/CD8B chain. Less frequently, CD8 can be expressed as a CD8A homodimer. A subset of natural killer cells, memory T-cells, intraepithelial lymphocytes, monocytes and dendritic cells expresses CD8A homodimers. Expressed at the cell surface of plasmacytoid dendritic cells upon herpes simplex virus-1 stimulation

## CD8 - Protocols

Provided below are standard protocols that you may find useful for product applications.

- [Western Blot](#)
- [Blocking Peptides](#)
- [Dot Blot](#)
- [Immunohistochemistry](#)
- [Immunofluorescence](#)
- [Immunoprecipitation](#)
- [Flow Cytometry](#)
- [Cell Culture](#)

## CD8 - Images



Tonsil