

SDHA
Mouse Monoclonal antibody(Mab)
Catalog # AD80574

Specification

SDHA - Product info

Application	IHC-P
Primary Accession	P31040
Reactivity	Human
Host	Mouse
Clonality	Monoclonal
Calculated MW	72692

SDHA - Additional info

Gene ID **6389**

Other Names

Succinate dehydrogenase [ubiquinone] flavoprotein subunit, mitochondrial, 1.3.5.1, Flavoprotein subunit of complex II, Fp, SDHA, SDH2, SDHF

Dilution

IHC-P~~Ready-to-use

Storage

This product is stored at 2-324 °C, please use it within the expiration date.

SDHA - Protein Information

Name SDHA

Synonyms
Function

SDH2, SDHF

Flavoprotein (FP) subunit of succinate dehydrogenase (SDH) that is involved in complex II of the mitochondrial electron transport chain and is responsible for transferring electrons from succinate to ubiquinone (coenzyme Q) (PubMed:[24781757](#)). Can act as a tumor suppressor (PubMed:[20484225](#)).

Cellular Location

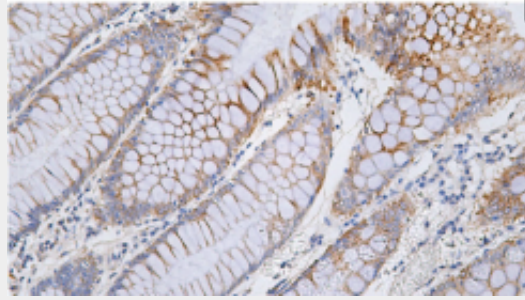
Mitochondrion inner membrane {ECO:0000250|UniProtKB:Q0QF01};
Peripheral membrane protein {ECO:0000250|UniProtKB:Q0QF01}; Matrix side {ECO:0000250|UniProtKB:Q0QF01}

SDHA - Protocols

Provided below are standard protocols that you may find useful for product applications.

- [Western Blot](#)
- [Blocking Peptides](#)
- [Dot Blot](#)
- [Immunohistochemistry](#)
- [Immunofluorescence](#)
- [Immunoprecipitation](#)
- [Flow Cytometry](#)
- [Cell Culture](#)

SDHA - Images



Colon cancer