

PD-L1 Antibody immunohistochemistry
Rabbit Monoclonal antibody(Mab)
Catalog # AD80570

Specification

PD-L1 Antibody immunohistochemistry - Product info

Application	IHC-P
Primary Accession	O9NZQ7
Reactivity	Human
Host	Rabbit
Clonality	Monoclonal
Calculated MW	33275

PD-L1 Antibody immunohistochemistry - Additional info

Gene ID **29126**

Other Names

Granzyme B, 3.4.21.79, C11, CTLA-1, Cathepsin G-like 1, CTSL1, Cytotoxic T-lymphocyte proteinase 2, Lymphocyte protease, Fragmentin-2, Granzyme-2, Human lymphocyte protein, HLP, SECT, T-cell serine protease 1-3E, GZMB {ECO:0000303|PubMed:32188940, ECO:0000312|HGNC:HGNC:4709}

Dilution

IHC-P~~Ready-to-use

Storage

This product is stored at 2-156 °C, please use it within the expiration date.

PD-L1 Antibody immunohistochemistry - Protein Information

Name CD274 ([HGNC:17635](#))

Function

Plays a critical role in induction and maintenance of immune tolerance to self (PubMed:[11015443](#), PubMed:[28813410](#), PubMed:[28813417](#), PubMed:[31399419](#)). As a ligand for the inhibitory receptor PDCD1/PD-1, modulates the activation threshold of T-cells and limits T-cell effector response (PubMed:[11015443](#), PubMed:[28813410](#), PubMed:[28813417](#)). Through a yet unknown activating receptor, may costimulate T-cell subsets that predominantly produce interleukin-10 (IL10) (PubMed:[10581077](#)). Can also act as a transcription coactivator: in response to hypoxia, translocates into the nucleus via its interaction with phosphorylated STAT3 and promotes transcription of GSDMC,

Cellular Location

leading to pyroptosis (PubMed:[32929201](#)). Cell membrane; Single-pass type I membrane protein. Early endosome membrane; Single-pass type I membrane protein. Recycling endosome membrane; Single-pass type I membrane protein. Nucleus. Note=Associates with CMTM6 at recycling endosomes, where it is protected from being targeted for lysosomal degradation (PubMed:[28813417](#)). Translocates to the nucleus in response to hypoxia via its interaction with phosphorylated STAT3 (PubMed:[32929201](#)). [Isoform 2]: Endomembrane system; Single-pass type I membrane protein

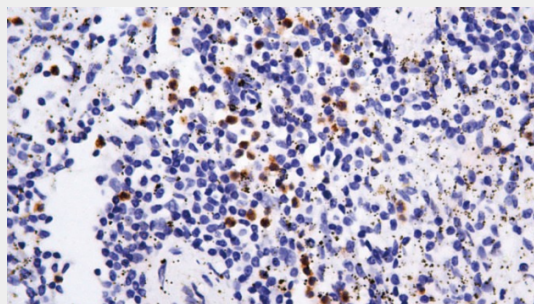
Tissue Location

Highly expressed in the heart, skeletal muscle, placenta and lung. Weakly expressed in the thymus, spleen, kidney and liver. Expressed on activated T- and B-cells, dendritic cells, keratinocytes and monocytes.

PD-L1 Antibody immunohistochemistry - Protocols

Provided below are standard protocols that you may find useful for product applications.

- [Western Blot](#)
- [Blocking Peptides](#)
- [Dot Blot](#)
- [Immunohistochemistry](#)
- [Immunofluorescence](#)
- [Immunoprecipitation](#)
- [Flow Cytometry](#)
- [Cell Culture](#)

PD-L1 Antibody immunohistochemistry - Images

Spleen