

Stathmin
Rabbit Monoclonal antibody(Mab)
Catalog # AD80562

Specification

Stathmin - Product info

Application	IHC-P
Primary Accession	P16949
Reactivity	Human
Host	Rabbit
Clonality	Monoclonal
Calculated MW	17303

Stathmin - Additional info

Gene ID **3925**

Other Names

Stathmin, Leukemia-associated phosphoprotein p18, Metablastin, Oncoprotein 18, Op18, Phosphoprotein p19, pp19, Prosolin, Protein Pr22, pp17, STMN1, C1orf215, LAP18, OP18

Dilution

IHC-P~~Ready-to-use

Storage

This product is stored at 2-8 °C, please use it within the expiration date.

Stathmin - Protein Information

Name STMN1

Synonyms

Function

C1orf215, LAP18, OP18

Involved in the regulation of the microtubule (MT) filament system by destabilizing microtubules. Prevents assembly and promotes disassembly of microtubules. Phosphorylation at Ser-16 may be required for axon formation during neurogenesis. Involved in the control of the learned and innate fear (By similarity).

Cellular Location

Tissue Location

Cytoplasm, cytoskeleton.

Ubiquitous. Expression is strongest in fetal and adult brain, spinal cord, and cerebellum, followed by thymus, bone marrow, testis, and fetal liver. Expression is intermediate in colon, ovary, placenta, uterus, and trachea, and is readily detected at substantially lower levels in all other tissues examined. Lowest expression is found in adult liver. Present in much

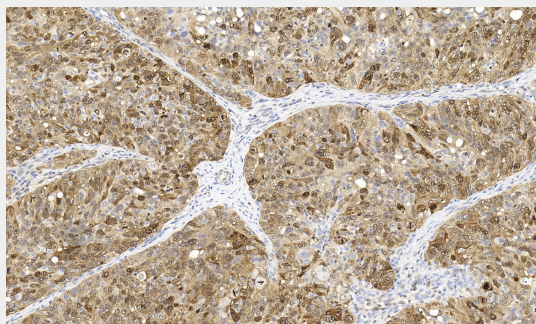
greater abundance in cells from patients with acute leukemia of different subtypes than in normal peripheral blood lymphocytes, non-leukemic proliferating lymphoid cells, bone marrow cells, or cells from patients with chronic lymphoid or myeloid leukemia.

Stathmin - Protocols

Provided below are standard protocols that you may find useful for product applications.

- [Western Blot](#)
- [Blocking Peptides](#)
- [Dot Blot](#)
- [Immunohistochemistry](#)
- [Immunofluorescence](#)
- [Immunoprecipitation](#)
- [Flow Cytometry](#)
- [Cell Culture](#)

Stathmin - Images



Ovarian carcinoma