

**CD11c**  
**Rabbit Monoclonal antibody(Mab)**  
**Catalog # AD80555**

## Specification

---

### CD11c - Product info

Application	IHC-P
Primary Accession	<a href="#">P20702</a>
Reactivity	Human
Host	Rabbit
Clonality	Monoclonal
Calculated MW	127829

### CD11c - Additional info

Gene ID	3687
---------	------

**Other Names**  
Integrin alpha-X, CD11 antigen-like family member C, Leu M5, Leukocyte adhesion glycoprotein p150, 95 alpha chain, Leukocyte adhesion receptor p150, 95, CD11c, ITGAX, CD11C

**Dilution**  
IHC-P~~Ready-to-use

Storage	<b>This product is stored at 2-52 °C, please use it within the expiration date.</b>
---------	---

### CD11c - Protein Information

**Name** ITGAX

<b>Synonyms</b>	<b>CD11C</b>
<b>Function</b>	<b>Integrin alpha-X/beta-2 is a receptor for fibrinogen. It recognizes the sequence G-P-R in fibrinogen. It mediates cell-cell interaction during inflammatory responses. It is especially important in monocyte adhesion and chemotaxis.</b>
<b>Cellular Location</b>	<b>Membrane; Single-pass type I membrane protein.</b>
<b>Tissue Location</b>	<b>Predominantly expressed in monocytes and granulocytes</b>

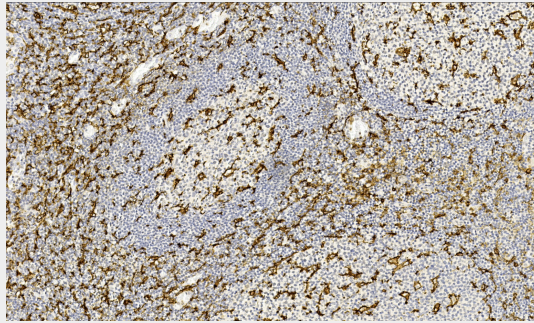
### CD11c - Protocols

Provided below are standard protocols that you may find useful for product applications.

- [Western Blot](#)
- [Blocking Peptides](#)

- [Dot Blot](#)
- [Immunohistochemistry](#)
- [Immunofluorescence](#)
- [Immunoprecipitation](#)
- [Flow Cytometry](#)
- [Cell Culture](#)

### CD11c - Images



Tonsil