

**NSE**  
**Mouse Monoclonal antibody(Mab)**  
**Catalog # AD80550**

## Specification

---

### NSE - Product info

Application	<b>IHC-P</b>
Primary Accession	<a href="#">P09104</a>
Reactivity	<b>Human</b>
Host	<b>Mouse</b>
Clonality	<b>Monoclonal</b>
Calculated MW	<b>47269</b>

### NSE - Additional info

Gene ID	<b>2026</b>
---------	-------------

**Other Names**  
Gamma-enolase, 4.2.1.11, 2-phospho-D-glycerate hydro-lyase, Enolase 2, Neural enolase, Neuron-specific enolase, NSE, ENO2

**Dilution**  
IHC-P~~Ready-to-use

Storage	<b>This product is stored at 2-236 °C, please use it within the expiration date.</b>
---------	--

### NSE - Protein Information

**Name** ENO2

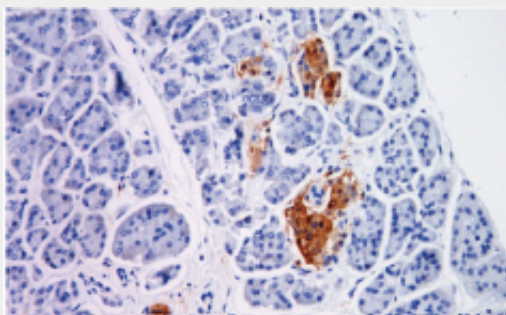
Function	<b>Has neurotrophic and neuroprotective properties on a broad spectrum of central nervous system (CNS) neurons. Binds, in a calcium- dependent manner, to cultured neocortical neurons and promotes cell survival (By similarity).</b>
Cellular Location	<b>Cytoplasm. Cell membrane. Note=Can translocate to the plasma membrane in either the homodimeric (alpha/alpha) or heterodimeric (alpha/gamma) form</b>
Tissue Location	<b>The alpha/alpha homodimer is expressed in embryo and in most adult tissues. The alpha/beta heterodimer and the beta/beta homodimer are found in striated muscle, and the alpha/gamma heterodimer and the gamma/gamma homodimer in neurons</b>

### NSE - Protocols

Provided below are standard protocols that you may find useful for product applications.

- [Western Blot](#)
- [Blocking Peptides](#)
- [Dot Blot](#)
- [Immunohistochemistry](#)
- [Immunofluorescence](#)
- [Immunoprecipitation](#)
- [Flow Cytometry](#)
- [Cell Culture](#)

#### **NSE - Images**



Pancreas