

Mesothelin
Rabbit Monoclonal antibody(Mab)
Catalog # AD80548

Specification

Mesothelin - Product info

Application	IHC-P
Primary Accession	O13421
Reactivity	Human
Host	Rabbit
Clonality	Monoclonal
Calculated MW	68986

Mesothelin - Additional info

Gene ID **10232**

Other Names

Mesothelin, CAK1 antigen, Pre-pro-megakaryocyte-potentiating factor, Megakaryocyte-potentiating factor, MPF, Mesothelin, cleaved form, MSLN, MPF

Dilution

IHC-P~~Ready-to-use

Storage

Maintain refrigerated at 2-8°C

Mesothelin - Protein Information

Name MSLN

Synonyms

Function

Cellular Location

Tissue Location

MPF

Membrane-anchored forms may play a role in cellular adhesion.

Cell membrane; Lipid-anchor, GPI-anchor.

Golgi apparatus [Isoform 3]: Secreted.

Expressed in lung. Expressed at low levels in heart, placenta and kidney. Expressed in mesothelial cells. Highly expressed in mesotheliomas, ovarian cancers, and some squamous cell carcinomas (at protein level).

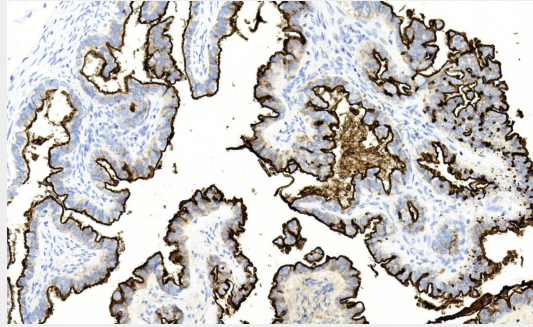
Mesothelin - Protocols

Provided below are standard protocols that you may find useful for product applications.

- [Western Blot](#)

- [Blocking Peptides](#)
- [Dot Blot](#)
- [Immunohistochemistry](#)
- [Immunofluorescence](#)
- [Immunoprecipitation](#)
- [Flow Cytometry](#)
- [Cell Culture](#)

Mesothelin - Images



Ovarian carcinoma