

bcl-2
Rabbit Monoclonal antibody(Mab)
Catalog # AD80545

Specification

bcl-2 - Product info

Application	IHC-P
Primary Accession	O92934
Reactivity	Human
Host	Rabbit
Clonality	Monoclonal
Calculated MW	18392

bcl-2 - Additional info

Gene ID **572**

Other Names

Bcl2-associated agonist of cell death, BAD, Bcl-2-binding component 6, Bcl-2-like protein 8, Bcl2-L-8, Bcl-xL/Bcl-2-associated death promoter, Bcl2 antagonist of cell death, BAD, BBC6, BCL2L8

Dilution

IHC-P~~Ready-to-use

Storage

This product is stored at 2-27 °C, please use it within the expiration date.

bcl-2 - Protein Information

Name BAD

Synonyms

Function

BBC6, BCL2L8

Promotes cell death. Successfully competes for the binding to Bcl-X(L), Bcl-2 and Bcl-W, thereby affecting the level of heterodimerization of these proteins with BAX. Can reverse the death repressor activity of Bcl-X(L), but not that of Bcl-2 (By similarity). Appears to act as a link between growth factor receptor signaling and the apoptotic pathways.

Cellular Location

Mitochondrion outer membrane. Cytoplasm {ECO:0000250|UniProtKB:Q61337}.

Note=Colocalizes with HIF3A in the cytoplasm (By similarity). Upon phosphorylation, locates to the cytoplasm.

{ECO:0000250|UniProtKB:Q61337}

Tissue Location

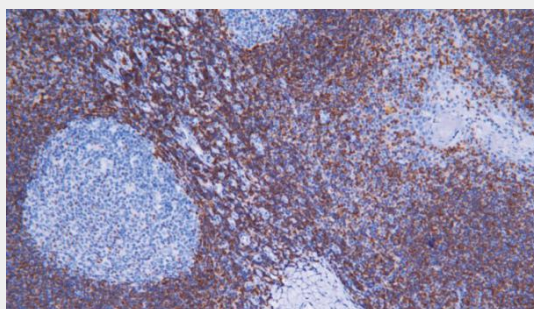
Expressed in a wide variety of tissues.

bcl-2 - Protocols

Provided below are standard protocols that you may find useful for product applications.

- [Western Blot](#)
- [Blocking Peptides](#)
- [Dot Blot](#)
- [Immunohistochemistry](#)
- [Immunofluorescence](#)
- [Immunoprecipitation](#)
- [Flow Cytometry](#)
- [Cell Culture](#)

bcl-2 - Images



Tonsil