

CD1a
Rabbit Monoclonal antibody(Mab)
Catalog # AD80538

Specification

CD1a - Product info

Application	IHC-P
Primary Accession	P06126
Reactivity	Human
Host	Rabbit
Clonality	Monoclonal
Calculated MW	37077

CD1a - Additional info

Gene ID **909**

Other Names

T-cell surface glycoprotein CD1a, T-cell surface antigen T6/Leu-6, hTa1 thymocyte antigen, CD1a, CD1A

Dilution

IHC-P~~Ready-to-use

Storage

This product is stored at 2-8 °C, please use it within the expiration date.

CD1a - Protein Information

Name CD1A

Function

Antigen-presenting protein that binds self and non-self lipid and glycolipid antigens and presents them to T-cell receptors on natural killer T-cells.

Cellular Location

Cell membrane; Single-pass type I membrane protein. Membrane raft; Single-pass type I membrane protein. Endosome membrane; Single- pass type I membrane protein. Note=Subject to intracellular trafficking between the cell membrane and endosomes

Tissue Location

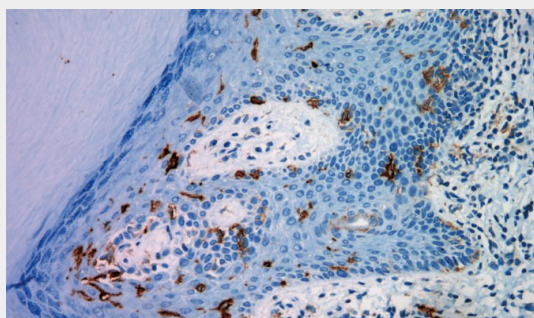
(PubMed:11231314). Localizes to cell surface lipid rafts (PubMed:18178838). Expressed on cortical thymocytes, epidermal Langerhans cells, dendritic cells, on certain T-cell leukemias, and in various other tissues.

CD1a - Protocols

Provided below are standard protocols that you may find useful for product applications.

- [Western Blot](#)
- [Blocking Peptides](#)
- [Dot Blot](#)
- [Immunohistochemistry](#)
- [Immunofluorescence](#)
- [Immunoprecipitation](#)
- [Flow Cytometry](#)
- [Cell Culture](#)

CD1a - Images



Skin