

**CD45RA**  
**Mouse Monoclonal antibody(Mab)**  
**Catalog # AD80523****Specification**

---

**CD45RA - Product info**

Application	<b>IHC-P</b>
Primary Accession	<a href="#">P08575</a>
Reactivity	<b>Human</b>
Host	<b>Mouse</b>
Clonality	<b>Monoclonal</b>
Calculated MW	<b>147486</b>

**CD45RA - Additional info**Gene ID **5788****Other Names**

Receptor-type tyrosine-protein phosphatase C, 3.1.3.48, Leukocyte common antigen, L-CA, T200, CD45, PTPRC ([HGNC:9666](http://www.genenames.org/cgi-bin/gene_symbol_report?hgnc_id=9666)), CD45

**Dilution**

IHC-P~~Ready-to-use

**Storage****This product is stored at 2-8 °C, please use it within the expiration date.****CD45RA - Protein Information****Name** PTPRC ([HGNC:9666](#))**Synonyms****Function****CD45**

**Protein tyrosine-protein phosphatase required for T-cell activation through the antigen receptor (PubMed:[35767951](#)). Acts as a positive regulator of T-cell coactivation upon binding to DPP4. The first PTPase domain has enzymatic activity, while the second one seems to affect the substrate specificity of the first one. Upon T-cell activation, recruits and dephosphorylates SKAP1 and FYN. Dephosphorylates LYN, and thereby modulates LYN activity (By similarity). Cell membrane; Single-pass type I membrane protein. Membrane raft. Synapse. Note=Colocalized with DPP4 in membrane rafts.**

**Cellular Location****Tissue Location****Isoform 1: Detected in thymocytes. Isoform**

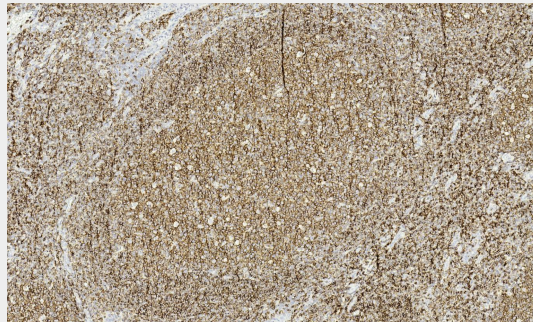
**2: Detected in thymocytes. Isoform 3: Detected in thymocytes. Isoform 4: Not detected in thymocytes. Isoform 5: Detected in thymocytes. Isoform 6: Not detected in thymocytes. Isoform 7: Detected in thymocytes Isoform 8: Not detected in thymocytes.**

## **CD45RA - Protocols**

Provided below are standard protocols that you may find useful for product applications.

- [Western Blot](#)
- [Blocking Peptides](#)
- [Dot Blot](#)
- [Immunohistochemistry](#)
- [Immunofluorescence](#)
- [Immunoprecipitation](#)
- [Flow Cytometry](#)
- [Cell Culture](#)

## **CD45RA - Images**



Tonsil