

HSP27
Mouse Monoclonal antibody(Mab)
Catalog # AD80518**Specification**

HSP27 - Product info

Application	IHC-P
Primary Accession	P04792
Reactivity	Human
Host	Mouse
Clonality	Monoclonal
Calculated MW	22783

HSP27 - Additional infoGene ID **3315****Other Names**

Heat shock protein beta-1, HspB1, 28 kDa heat shock protein, Estrogen-regulated 24 kDa protein, Heat shock 27 kDa protein, HSP 27, Stress-responsive protein 27, SRP27, HSPB1, HSP27, HSP28

Dilution

IHC-P~~Ready-to-use

Storage**This product is stored at 2-8 °C, please use it within the expiration date.****HSP27 - Protein Information****Name HSPB1****Synonyms****HSP27, HSP28****Function****Small heat shock protein which functions as a molecular chaperone probably maintaining denatured proteins in a folding- competent state (PubMed:[10383393](#), PubMed:[20178975](#)). Plays a role in stress resistance and actin organization (PubMed:[19166925](#)). Through its molecular chaperone activity may regulate numerous biological processes including the phosphorylation and the axonal transport of neurofilament proteins (PubMed:[23728742](#)).****Cellular Location****Cytoplasm. Nucleus Cytoplasm, cytoskeleton, spindle Note=Cytoplasmic in interphase cells. Colocalizes with mitotic spindles in mitotic cells. Translocates to the nucleus during heat shock and resides in sub-nuclear structures known as SC35**

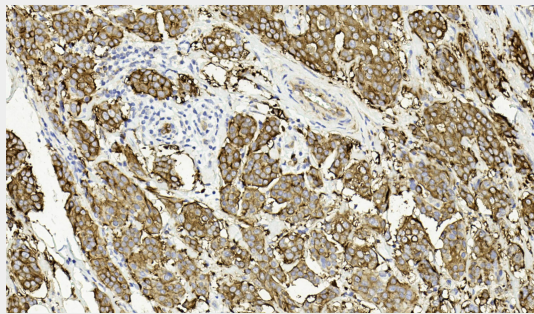
Tissue Location

speckles or nuclear splicing speckles. Detected in all tissues tested: skeletal muscle, heart, aorta, large intestine, small intestine, stomach, esophagus, bladder, adrenal gland, thyroid, pancreas, testis, adipose tissue, kidney, liver, spleen, cerebral cortex, blood serum and cerebrospinal fluid. Highest levels are found in the heart and in tissues composed of striated and smooth muscle.

HSP27 - Protocols

Provided below are standard protocols that you may find useful for product applications.

- [Western Blot](#)
- [Blocking Peptides](#)
- [Dot Blot](#)
- [Immunohistochemistry](#)
- [Immunofluorescence](#)
- [Immunoprecipitation](#)
- [Flow Cytometry](#)
- [Cell Culture](#)

HSP27 - Images

Breast cancer